

ANNEX H TO HURRICANE PLAN

OPERATIONAL AREAS & OPERATIONAL AREA PLANNING FACTORS

I. INTRODUCTION

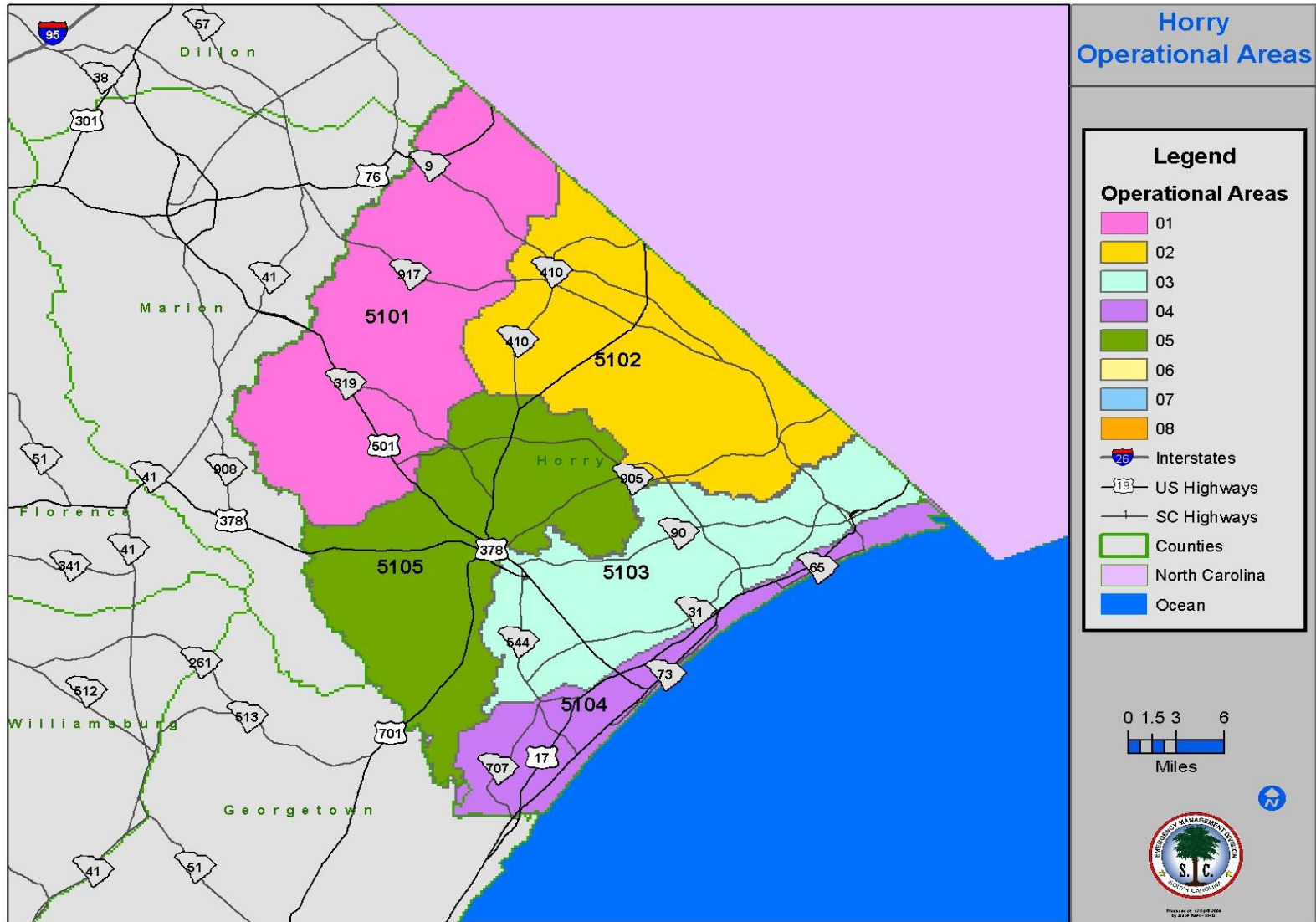
- A. The Operational Areas were developed by SCEMD and the respective counties in order to define manageable, easily recognizable areas within each county that affords a basis to model possible effects of disastrous weather.
- B. The Operational Areas are composed of one or more census tracts to enable SCEMD to conduct hurricane loss estimation modeling and baseline disaster needs assessments.
- C. These areas are used to identify key and critical facilities important to continued governmental functioning and or recovery.
- D. These areas also assist the counties and the State in focusing response to an emergency situation.

II. OPERATIONAL AREA MODELING

- A. The maps depict Operational Areas in the 3 Coastal Conglomerate counties.
- B. Loss Estimation and Human Needs Requirements.
 - 1. The graphs and charts following the maps depict the worst-case loss estimates and baseline human needs requirements developed for each Operational Area using HAZUS.
 - 2. The loss estimates are based on wind damage only. Storm surge loss estimates will be conducted and included in the charts when future HAZUS versions contain that capability.
 - 3. Worst-case for each coastal county is defined as a Category 5 hurricane that makes landfall in the county so as to generate the maximum wind damage to the greatest area.
 - 4. For baseline planning purposes, pre-evacuation permanent population data in each operational area formed the computational baseline. A small percentage of the estimated tourist or visitor population was included in the analysis to reflect the assumption this segment of the population will evacuate for a Category 5 hurricane and not return post-impact.
 - 5. The majority of the data was developed using the 2007 projected U.S. Census estimates projecting a 2009 population. Essential facility loss estimates and hazardous material sites are based on 2000 HAZUS data.
- C. Information contained in the following charts and graphs should be used to develop pre-storm, initial response/support plans which will form the planning basis for actual, real-time response/support planning.

- D. This section provides planning figures for basic support items in a hurricane response scenario. The demographic information loss details estimated needs for sheltering and provided additional planning needs such as displaced households, age, Spanish-speaking populations, and others. The need for pet shelter support is also noted.
- E. Additional loss estimates highlight Essential Facilities (Based on 2000 HAZUS data), Hazardous Materials Sites (Based on 2000 HAZUS data), Residential Damage, and potential type and weight (in tons) of debris in a post storm scenario.
- F. Commodity requirements based on citizen needs are displayed by water, meals, ice, and selected commodity. The daily support packages by individual item are provided for planning purposes

HORRY COUNTY



OPERATIONAL AREA DESCRIPTIONS

OPERATIONAL AREA: Northern Conglomerate			
COUNTY NAME: HORRY			
COUNTY CODE: Horr			
County/ID	FIPS Code	Location	Boundary
Horr -1	5101	Aynor	<ul style="list-style-type: none"> • West boundary is the county line / Little Pee Dee River • North boundary is the State line • East and south boundary is a line from the State line south following Fairview Bluff Hwy., Barnhill Rd., Mill Pond Rd., Louisville Rd., Valley Forge Rd., Good Luck Rd., Horry Rd., and Enoch Rd. to the county line • Includes the towns of Aynor, Galivants Ferry, and Cool Springs
Horr -2	5102	Loris	<ul style="list-style-type: none"> • West boundary is from the State line following Fairview Bluff Hwy., Barnhill Rd., Mill Pond Rd., Louisville Rd, Valley Forge Rd • South boundary is from the White Oak Swamp to the east of the Waccamaw River • Includes the town of Loris
Horr -3	5103	Red Hill	<ul style="list-style-type: none"> • North boundary is the State line. • West boundary is the Waccamaw River • Northeast is the State line • South boundary is by the Intracoastal Waterway • Include the towns of Brooksville, Wampee, and Nixonville

Horr -4	5104	Myrtle Beach	<ul style="list-style-type: none"> • North boundary is the State line • South boundary is the county line • East boundary is the Atlantic Ocean • West boundary is the Intracoastal Waterway. • Includes the towns of Cherry Grove, Ocean Drive, North Myrtle Beach, Crescent Beach, Atlantic Beach, Windy Hill, Briarcliff Acres, Myrtle Beach, Surfside Beach, and Garden City.
Horr -5	5105	Conway	<ul style="list-style-type: none"> • West boundary is a line established by Good Luck Rd., Horry Rd., and Enoch Rd. to the county line • East boundary is the Waccamaw River • South boundary is the county line • North boundary is the White Oak Swamp connecting to the Waccamaw River • Includes the town of Conway.

DEMOGRAPHICS AND NEEDS ASSESSMENT

Horry County Category	Description	Operational Area 5101 (6.16%)	Operational Area 5102 (9.87%)	Operational Area 5103 (22.57%)	Operational Area 5104 (44.33%)	Operational Area 5105 (17.08%)	Horry County Total
Demographics	Population	15,138	24,255	55,464	108,938	41,973	245,768
	Total Households	6,582	10,546	24,115	47,364	18,249	106,856
Additional Demographic Information	Age 65 or older	2,377	3,808	8,708	17,103	6,590	38,586
	Non English speaking HH	954	1,528	3,494	6,863	2,644	15,483
	Homeless	151	243	555	1,089	420	2,458
	HH w/o Transportation	283	453	1,037	2,037	785	4,595
	Disabled	3,361	5,385	12,313	24,184	9,318	54,560
Initial Shelter	Displaced Households	50	41	12,716	41,133	5,742	59,682
	Persons per H/H (2.3 people per H/H)	115	94	29,247	94,606	13,207	137,269
	# of People Seeking Short-term shelter	12	12	3,138	9,914	1,639	14,715
Animal Response	# of pets needing shelter (60% of HH Seeking Shelter)	3	3	819	2,586	427	3,839

CRITICAL NEEDS

Needs Assessment	Description	Operational Area 5101(6.16%)	Operational Area 5102 (9.87%)	Operational Area 5103 (22.57%)	Operational Area 5104 (44.33%)	Operational Area 5105 (17.08%)	County Total
Drinking Water: 3 1-liter bottles per person per day	Sheltered	12	12	3,138	9,914	1,639	14,715
	Persons per HH displaced (minus # in shelters)	103	82	26,108	84,692	11,568	122,554
	Emergency Workers (2.5 per 100 displaced households)	1	1	318	1,028	144	1,492
	Total Liters of water per day	349	286	88,694	286,903	40,050	416,282
Meals (2 meals per day)	Sheltered	24	24	6,277	19,828	3,277	29,430
	Persons per HH displaced (minus # in shelters)	206	165	52,217	169,384	23,136	245,107
	Emergency Workers (2.5 per 100 displaced households)	2	2	636	2,057	287	2,984
	Total Meals Per Day	232	191	59,129	191,268	26,700	277,521
Ice = 8 lb. Bag daily	1 bag per/displaced person (minus # in shelters)	103	82	26,108	84,692	11,568	122,554
	1 bag per person sheltered	12	12	3,138	9,914	1,639	14,715
	Total Bags of Ice per Day	115	94	29,247	94,606	13,207	137,269
Blankets 2 per person	Sheltered	24	24	6,277	19,828	3,277	29,430
Cots	1 per sheltered	12	12	3,138	9,914	1,639	14,715
	20% overage	2	2	628	1,983	328	2,943
	Total Cots	14	14	3,766	11,897	1,966	17,658
Generators	1 per 385 people sheltered	0	0	8	26	4	38

Needs Assessment	Description	Operational Area 5101(6.16%)	Operational Area 5102 (9.87%)	Operational Area 5103 (22.57%)	Operational Area 5104 (44.33%)	Operational Area 5105 (17.08%)	County Total
Portable Toilets	1 per 15 people sheltered	1	1	209	661	109	981

DAMAGE

County Category	Description	Operational Area 5101 (6.16%)	Operational Area 5102 (9.87%)	Operational Area 5103 (22.57%)	Operational Area 5104 (44.33%)	Operational Area 5105 (17.08%)	Horry County Total
Essential Facilities (Based on 2000 HAZUS data)	#Police Stations Total	1	0	0	2	2	5
	*Probability of At Least Moderate Damage >50%	0	0	0	2	0	2
	#Schools Total	4	5	5	16 To include Horry / Georgetown Tech	10 To include Coastal Carolina U	40
	*Probability of At Least Moderate Damage >50%	0	0	2	16	4	22
	# Hospitals Total	0	1	1	1	0	3
	*Probability of At Least Moderate Damage >50%	0	0	1	1	0	2
	# Fire Stations Total	8	6	6	11	6	37
	*Probability of At Least Moderate Damage >50%	0	0	4	11	3	18
Inventory of Hazardous Materials Sites (Based on 2000 HAZUS data)		29	69	25	453	135	711
Residential Damage	Total # of Houses	6,349	9,715	21,340	56,796	15,690	109,890
	Moderate Damage Count	258	222	4,246	9,917	3,716	18,359
	Severe Damage Count	31	11	4,754	17,532	2,508	24,836
	Completely Destroyed County	28	13	6,314	24,607	2,774	33,736
	Damage Subtotal	317	246	15,314	52,055	8,998	76,930

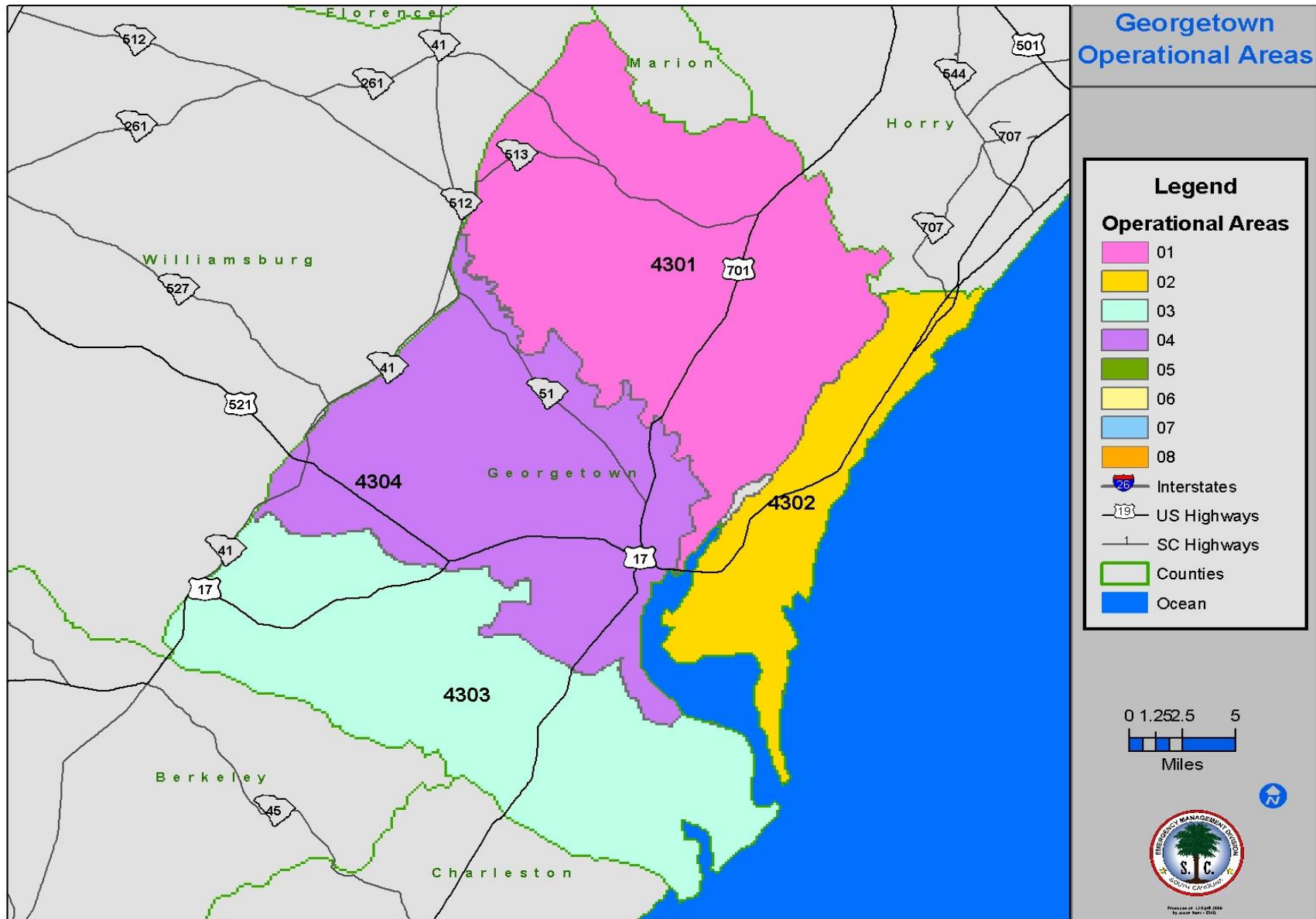
County Category	Description	Operational Area 5101 (6.16%)	Operational Area 5102 (9.87%)	Operational Area 5103 (22.57%)	Operational Area 5104 (44.33%)	Operational Area 5105 (17.08%)	Horry County Total
Debris Total Weight (Tons)	Brick/Wood	3,088	3,198	410,951	1,742,424	171,135	2,330,796
	Concrete / Steel	26	2	37,786	145,449	14,684	197,947
	Tree	237,065	239,010	1,153,419	628,790	1,155,127	3,413,411
	Eligible Tree Weight	10,788	13,388	143,978	231,858	95,002	495,014

RESOURCE REQUIREMENTS

Horry County Category	Description	Operational Area 5101 (6.16%)	Operational Area 5102 (9.87%)	Operational Area 5103 (22.57%)	Operational Area 5104 (44.33%)	Operational Area 5105 (17.08%)	Horry County Total
Ice per Day	8 lb bag/per person	115	94	29,247	94,606	13,207	137,269
8 lb per bag	Total Weight per Operational Area	920	754	233,974	756,847	105,653	1,098,149
	Tons of ice	0	0	117	378	53	549
1 pallet/275 bags	Total # pallets per Operational Area	0	0	106	344	48	499
20 pallets per truck	Total number of Trucks per day	0	0	5	17	2	25
Water	3 one liter bottles/per person/day	349	286	88,694	286,903	40,050	416,282
12 bottles per case	Total cases per Operational Area	29	24	7,391	23,909	3,338	34,690
30 lb per case	Total Weight per Operational Area	872	715	221,735	717,257	100,126	1,040,705
	Tons of water	0	0	111	359	50	520
70 cases per pallet	Total # pallets per Operational Area	0	0	106	342	48	496
20 pallets per truck	Total number of Trucks per day	0	0	5	17	2	25
Meals	2/person/day	232	191	59,129	191,268	26,700	277,521
12 meal per case	Total cases per Operational Area	19	16	4,927	15,939	2,225	23,127
20 lbs per case	Total Weight per Operational Area	387	318	98,549	318,781	44,501	462,535
	Tons of MREs	0	0	49	159	22	231
48 cases per pallet	Total # pallets per Operational Area	0	0	103	332	46	482

Horry County Category	Description	Operational Area 5101 (6.16%)	Operational Area 5102 (9.87%)	Operational Area 5103 (22.57%)	Operational Area 5104 (44.33%)	Operational Area 5105 (17.08%)	Horry County Total
40 pallets per truck	Total number of Trucks per day	0	0	3	8	1	12
	Total number of Trucks	0	0	13	43	6	62
	# of type III PODs required	0	0	6	19	3	27
	# of personnel required to operate PODs	1	1	187	605	85	879

GEORGETOWN COUNTY





OPERATIONAL AREA DESCRIPTIONS

OPERATIONAL AREA: Northern Conglomerate			
COUNTY NAME: GEORGETOWN			
COUNTY CODE: Geor			
County/ID	FIPS Code	Location	Boundary
Geor -1	4301	Yauhannah	<ul style="list-style-type: none"> • East boundary is the Waccamaw River • West boundary is the county line • Northern boundary is the county line, and the south boundary is Black River • Includes the towns of Midway Cross Roads and Plantersville
Geor -2	4302	Waccamaw Neck	<ul style="list-style-type: none"> • West boundary is the Waccamaw River • North boundary is the county line • East boundary is the Atlantic Ocean • South boundary is Winyah Bay • Includes Pawleys Island, Litchfield Beach, and DeBordieu\
Geor -3	4303	North Santee	<ul style="list-style-type: none"> • North boundary is a line created by the Boggy Swamp, Sampit River, Woodstock Road, Penny Royal Rd., East CCC Rd., White Hall Rd., and South Island Rd • West and south boundaries are the county lines • East boundary is Winyah Bay • Includes town of North Santee

Geor -4	4304	Georgetown	<ul style="list-style-type: none">• South boundary is a line created by the Boggy Swamp, Sampit River, Woodstock Rd., Penny Royal Rd., East CCC Rd., White Hall Rd., and South Island Rd• West boundary is the county line• East boundary is Winyah Bay• North boundary is the Black River• Includes the town of Andrews and City of Georgetown
----------------	------	------------	---

DEMOGRAPHICS AND NEEDS ASSESSMENT

Georgetown County Category	Description	Operational Area 4301 (12.89%)	Operational Area 4302 (29.83%)	Operational Area 4303 (7.02%)	Operational Area 4304 (50.25%)	Georgetown County Total
Demographics	Population	7,942	18,380	4,325	30,962	61,609
	Total Households	3,453	7,991	1,880	13,462	26,787
Additional Demographic Information	Age 65 or older	1,334	3,088	727	5,202	10,351
	Non English speaking HH	278	643	151	1,084	2,157
	Homeless	79	184	43	310	616
	HH w/o Transportation	148	344	81	579	1,162
	Disabled	1,763	4,080	960	6,874	13,679
Initial Shelter	Displaced Households	1,630	6,038	2,684	3,037	13,389
	Persons per H/H (2.3 people per H/H)	3,749	13,887	6,173	6,985	30,795
	# of People Seeking Short-term shelter	2,971	5,112	2,610	3,638	14,331
Animal Response	# of pets needing shelter (60% of HH seeking Shelter)	775	1,334	681	949	3,739

CRITICAL NEEDS

Needs Assessment	Description	Operational Area 4301 (12.89%)	Operational Area 4302 (29.83%)	Operational Area 4303 (7.02%)	Operational Area 4304 (50.25%)	County Total
Drinking Water: 3 1-liter bottles per person per day	Sheltered	2,971	5,112	2,610	3,638	14,331
	Persons per HH displaced (minus # in shelters)	778	8,775	3,563	3,347	16,464
	Emergency Workers (2.5 per 100 displaced households)	41	151	67	76	335
	Total Liters of water per day	11,369	42,115	18,721	21,183	93,388
Meals (2 meals per day)	Sheltered	5,942	10,224	5,220	7,276	28,662
	Persons per HH displaced (minus # in shelters)	1,556	17,551	7,126	6,694	32,927
	Emergency Workers (2.5 per 100 displaced households)	82	302	134	152	669
	Total Meals Per Day	7,580	28,077	12,481	14,122	62,259
Ice = 8 lb. Bag daily	1 bag per/displaced person (minus # in shelters)	778	8,775	3,563	3,347	16,464
	1 bag per person sheltered	2,971	5,112	2,610	3,638	14,331
	Total Bags of Ice per Day	3,749	13,887	6,173	6,985	30,795
Blankets 2 per person	Sheltered	5,942	10,224	5,220	7,276	28,662
Cots	1 per sheltered	2,971	5,112	2,610	3,638	14,331
	20% overture	594	1,022	522	728	2,866
	Total Cots	3,565	6,134	3,132	4,366	17,197
Generators	1 per 385 people sheltered	8	13	7	9	37

Needs Assessment	Description	Operational Area 4301 (12.89%)	Operational Area 4302 (29.83%)	Operational Area 4303 (7.02%)	Operational Area 4304 (50.25%)	County Total
Portable Toilets	1 per 15 people sheltered	198	341	174	243	955

DAMAGE

Georgetown County Category	Description	Operational Area 4301 (12.89%)	Operational Area 4302 (29.83%)	Operational Area 4303 (7.02%)	Operational Area 4304 (50.25%)	Georgetown County Total
Essential Facilities (Based on 2000 HAZUS data)	#Police Stations Total	0	0	0	3	3
	*Probability of At Least Moderate Damage >50%	0	0	0	3	3
	#Schools Total	5	2	1	9	17
	*Probability of At Least Moderate Damage >50%	5	2	1	9	17
	# Hospitals Total	0	0	0	1	1
	*Probability of At Least Moderate Damage >50%	0	0	0	1	1
	# Fire Stations Total	5	4	1	6	16
	*Probability of At Least Moderate Damage >50%	5	4	1	6	16
Inventory of Hazardous Materials Sites (Based on 2000 HAZUS data)		11	48	6	255	320
Residential Damage	Total # of Houses	3,054	12,237	1,683	11,888	28,862
	Moderate Damage Count	853	2,833	348	3,129	7,163
	Severe Damage Count	687	3,876	404	3,224	8,191
	Completely Destroyed County	899	4,371	727	3,752	9,749
	Damage Subtotal	2,439	11,080	1,479	10,105	25,103

Georgetown County Category	Description	Operational Area 4301 (12.89%)	Operational Area 4302 (29.83%)	Operational Area 4303 (7.02%)	Operational Area 4304 (50.25%)	Georgetown County Total
Debris Total Weight (Tons)	Brick/Wood	46,017	257,049	37,380	211,476	551,922
	Concrete / Steel	5,366	14,656	5,848	16,819	42,689
	Tree	1,261,539	401,669	1,142,086	1,046,801	3,852,095
	Eligible Tree Weight	41,382	66,054	45,683	91,034	244,153

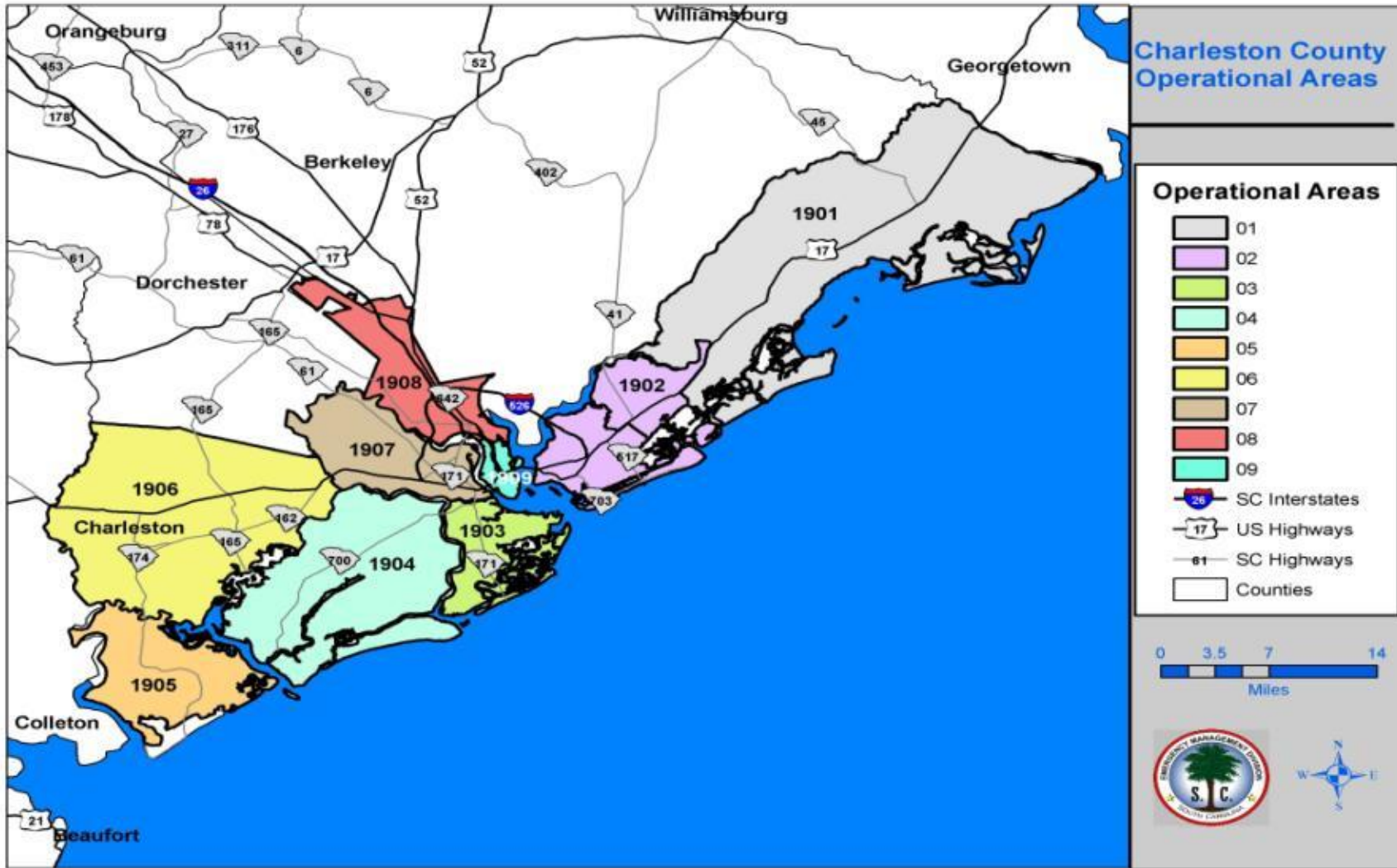
*At Least Moderate Damage means the facility needs to be inspected before reuse.

RESOURCE REQUIREMENTS

Georgetown County Category	Description	Operational Area 4301 (12.89%)	Operational Area 4302 (29.83%)	Operational Area 4303 (7.02%)	Operational Area 4304 (50.25%)	Georgetown County Total
Ice	8 lb bag/per person	3,749	13,887	6,173	6,985	30,795
8 lb per bag	Total Weight per Operational Area	29,992	111,099	49,386	55,881	246,358
	Tons of ice	15	56	25	28	123
1 pallet/275 bags	Total # pallets per Operational Area	14	50	22	25	112
20 pallets per truck	Total number of Trucks per day	1	3	1	1	6
Water	3 one liter bottles/per person/day	11,369	42,115	18,721	21,183	93,388
12 bottles per case	Total cases per Operational Area	947	3,510	1,560	1,765	7,782
30 lb per case	Total Weight per Operational Area	28,423	105,288	46,802	52,958	233,471
	Tons of water	14	53	23	26	117
70 cases per pallet	Total # pallets per Operational Area	14	50	22	25	111
20 pallets per truck	Total number of Trucks per day	1	3	1	1	6
Meals	2/person/day	7,580	28,077	12,481	14,122	62,259
12 meal per case	Total cases per Operational Area	632	2,340	1,040	1,177	5,188
20 lbs per case	Total Weight per Operational Area	12,633	46,795	20,801	23,537	103,765
	Tons of MREs	6	23	10	12	52
48 cases per pallet	Total # pallets per Operational Area	13	49	22	25	108
40 pallets per truck	Total number of Trucks per day	0	1	1	1	3

Georgetown County Category	Description	Operational Area 4301 (12.89%)	Operational Area 4302 (29.83%)	Operational Area 4303 (7.02%)	Operational Area 4304 (50.25%)	Georgetown County Total
	Total number of Trucks	2	6	3	3	14
	# of type III PODs required	1	3	1	1	6
	# of personnel required to operate PODs	24	89	40	45	197

CHARLESTON COUNTY



OPERATIONAL AREA DESCRIPTIONS

OPERATIONAL AREA: Central Conglomerate			
COUNTY NAME: CHARLESTON COUNTY			
COUNTY CODE: Chas			
County/ID	FIPS Code	Location	Description/Boundary
Chas-1	1901	McClellanville	<ul style="list-style-type: none"> • North boundary is county line • South boundary is Steed Creek Rd and Doar Rd Divide at Bulls Bay • Includes towns of McClellanville and Awendaw.
Chas-2	1902	Mt. Pleasant/ Awendaw	<ul style="list-style-type: none"> • North boundary divides at Bull Bay • West boundary is the Wando River • South boundary is the Cooper River • Includes the towns of Mt. Pleasant, Awendaw, Isle of Palms and Sullivans Island.
Chas-3	1903	James Island / Folly Beach	<ul style="list-style-type: none"> • North boundary is Wappoo Creek • East and southern boundary is the Atlantic • West boundary is the Stono River • Includes Folly Beach area.

Chas-4	1904	Johns Island	<ul style="list-style-type: none"> • North and east boundary is the Stono River • South boundary is the Atlantic • West boundary is the North Edisto River.
Chas-5	1905	Edisto Island	<ul style="list-style-type: none"> • Includes the entire island as bounded by the Edisto and North Edisto Rivers.
Chas-6	1906	Hollywood / Ravenel	<ul style="list-style-type: none"> • North boundary is county line • South boundary is Dawho River • West boundary is the Edisto River • East boundary is Wadalaw River • Includes towns of Hollywood, Ravenel, and Meggett
Chas-7	1907	West Ashley / St. Andrews	<ul style="list-style-type: none"> • North boundary is county line and is between Stono and Ashley Rivers • South boundary is the Wappoo Creek • No cities / towns located in this Operational Area
Chas-8	1908	Peninsula North	<ul style="list-style-type: none"> • East boundary is the Cooper River • West boundary is the Ashley River • Includes the City of Charleston, North area, Lincolnville and N. Charleston.
Chas-9	1909	Peninsula South	<ul style="list-style-type: none"> • Pittsburgh Ave and Meeting Street/King St. Extension north up King St. Extension to where it intersects with I-26 West to the Ashley River between Rhodia and Osprey Place Apartments • Boundary follows the two cities boundaries.

DEMOGRAPHICS AND NEEDS ASSESSMENT AREAS 1-5

Charleston County Category	Description	Operational Area 1901 (1%)	Operational Area 1902 (20%)	Operational Area 1903 (11%)	Operational Area 1904 (5%)	Operational Area 1905 (.50%)
Demographics	Population	3,359	67,180	36,949	16,795	1,680
	Total Households	1,335	26,712	14,692	6,678	667
Additional Demographic Information	Age 65 or older	643	7,435	4,287	1,926	196
	Non-English Speaking	352	4,122	2,345	1,056	107
	Homeless	55	644	366	165	17
	HH w/o Transportation	103	1,204	686	308	31
	Disabled	1221	14,287	8134	3,662	372
Initial Shelter	Displaced Households	1,467	21,897	13,410	3,789	386
	Persons per H/H (2.4 people per H/H)	3,521	52,553	32,184	9,094	926
	# of People Seeking Short-term shelter	432	4,616	3,169	1,024	132
Animal Response	# of pets needing shelter (60% of HH displaced)	880	13,138	8,046	2,273	232

DEMOGRAPHICS AND NEEDS ASSESSMENT AREAS 6-9

Charleston County Category	Description	Operational Area 1906 (4%)	Operational Area 1907 (19.5%)	Operational Area 1908 (27.49%)	Operational Area 1909 (11.51%)	Charleston County Total
Demographics	Population	13,436	65,501	92,338	38,662	335,900
	Total Households	5,342	26,045	31,253	20,836	133,560
Additional Demographic Information	Age 65 or older	1,608	7,744	9,166	6,111	39,233
	Non-English Speaking	880	4,235	5,014	3,343	21,455
	Homeless	137	662	784	522	3,352
	HH w/o Transportation	257	1,237	1,465	976	6,267
	Disabled	3051	14691	17392	11595	74,405
Initial Shelter	Displaced Households	1,915	19,343	19,663	13,115	94,985
	Persons per H/H (2.4 people per H/H)	4,596	46,423	47,191	31,476	227,964
	# of People Seeking Short-term shelter	573	4,879	6,546	4,364	25,735
Animal Response	# of pets needing shelter (60% of HH displaced)	1,149	11,606	11,798	7,175	56,087

CRITICAL NEEDS AREAS 1-5

Needs Assessment	Description	Operational Area 1901 (1%)	Operational Area 1902 (20%)	Operational Area 1903 (11%)	Operational Area 1904 (5%)	Operational Area 1905 (.50%)
Drinking Water: 3 1-liter bottles per person per day	Sheltered	432	4,616	3,169	1,024	132
	Persons per HH displaced (minus # in shelters)	3,089	47,937	29,015	8,070	794
	Emergency Workers (2.5 per 100 displaced households)	37	547	335	95	10
	Total Liters of water per day	10,672	159,301	97,558	27,565	2,808
Meals (2 meals per day)	Sheltered	864	9,232	6,338	2,048	264
	Persons per HH displaced (minus # in shelters)	6,178	95,874	58,030	16,139	1,589
	Emergency Workers (2.5 per 100 displaced households)	73	1,095	671	189	19
	Total Meals Per Day	7,115	106,200	65,039	18,377	1,872
Ice = 8 lb. Bag daily	1 bag per/displaced person (minus # in shelters)	3,089	47,937	29,015	8,070	794
	1 bag per person sheltered	432	4,616	3,169	1,024	132
	Total Bags of Ice per Day	3,521	52,553	32,184	9,094	926
Blankets 2 per person	Sheltered	864	9,232	6,338	2,048	264
Cots	1 per sheltered	432	4,616	3,169	1,024	132
	20% overture	86	923	634	205	26
	Total Cots	518	5,539	3,803	1,229	158
Generators	1 per 385 people sheltered	1	12	8	3	0
Portable Toilets	1 per 15 people sheltered	29	308	211	68	9

CRITICAL NEEDS AREAS 6-9

Needs Assessment	Description	Operational Area 1906 (4%)	Operational Area 1907 (19.5%)	Operational Area 1908 (27.49%)	Operational Area 1909 (11.51%)	County Total
Drinking Water: 3 1-liter bottles per person per day	Sheltered	573	4,879	6,546	4,364	25,735
	Persons per HH displaced (minus # in shelters)	4,023	41,544	40,645	27,112	202,229
	Emergency Workers (2.5 per 100 displaced households)	48	484	492	328	2,375
	Total Liters of water per day	13,932	140,720	143,048	95,412	691,016
Meals (2 meals per day)	Sheltered	1,146	9,758	13,092	8,728	51,470
	Persons per HH displaced (minus # in shelters)	8,046	83,088	81,290	54,224	404,458
	Emergency Workers (2.5 per 100 displaced households)	96	967	983	656	4,749
	Total Meals Per Day	9,288	93,814	95,366	63,608	460,677
Ice = 8 lb. Bag daily	1 bag per/displaced person (minus # in shelters)	4,023	41,544	40,645	27,112	202,229
	1 bag per person sheltered	573	4,879	6,546	4,364	25,735
	Total Bags of Ice per Day	4,596	46,423	47,191	31,476	227,964
Blankets 2 per person	Sheltered	1,146	9,758	13,092	8,728	51,470
Cots	1 per sheltered	573	4,879	6,546	4,364	25,735
	20% overture	115	976	1,309	873	5,147
	Total Cots	688	5,855	7,855	5,237	30,882
Generators	1 per 385 people sheltered	1	13	17	11	67
Portable Toilets	1 per 15 people sheltered	38	325	436	291	1,716

DAMAGE AREAS 1-5

County Category	Description	Operational Area 1901 (1%)	Operational Area 1902 (20%)	Operational Area 1903 (11%)	Operational Area 1904 (5%)	Operational Area 1905 (.50%)
Essential Facilities	#Police Stations Total	0	4	1	0	2
	*Probability of At Least Moderate Damage >50%	0	0	0	0	0
	#Schools Total	7	12	8	10	2
	*Probability of At Least Moderate Damage >50%	1	1	1	3	1
	# Hospitals Total	0	1	0	0	0
	*Probability of At Least Moderate Damage >50%	0	0	0	0	0
	# Fire Stations Total	5	9	7	6	1
	*Probability of At Least Moderate Damage >50%	1	2	2	1	0
Inventory of Hazardous Materials Sites		17	145	74	46	8
	Total # of Houses	4,312	29,583	15,117	10,401	853
	Moderate Damage Count	919	4,016	1,933	2,890	228
	Severe Damage Count	1,210	9,099	4,635	2,947	196
	Completely Destroyed County	1,776	15,422	8,067	2,881	251
	Damage Subtotal	3,905	28,537	14,635	8,718	675
Debris Total Weight (Tons)	Brick/Wood	44,195	773,175	392,743	164,533	12,482
	Concrete / Steel	4,536	28,283	14,148	8,431	1,195
	Tree	1,394,666	258,316	85,386	373,438	153,955
	Eligible Tree Weight	41,840	84,042	34,087	41,144	7,698

*At Least Moderate Damage means the facility needs to be inspected before reuse

DAMAGE AREAS 6-9

County Category	Description	Operational Area 1906 (4%)	Operational Area 1907 (19.5%)	Operational Area 1908 (27.49)%	Operational Area 1909 (11.51%)	Charleston County Total
Essential Facilities	#Police Stations Total	1	0	1	3	12
	*Probability of At Least Moderate Damage >50%	0	0	0	1	1
	#Schools Total	9	12	33	23	116
	*Probability of At Least Moderate Damage >50%	3	3	11	0	24
	# Hospitals Total	0	1	3	7	12
	*Probability of At Least Moderate Damage >50%	0	1	0	0	1
	# Fire Stations Total	4	8	12	6	58
	*Probability of At Least Moderate Damage >50%	0	1	1	2	10
Inventory of Hazardous Materials Sites		57	194	806	329	1,676
	Total # of Houses	5,353	22,405	23,353	15,569	126,946
	Moderate Damage Count	1,577	5,538	6,274	4,183	27,558
	Severe Damage Count	916	7,197	7,454	4,969	38,623
	Completely Destroyed County	962	6,910	6,438	4,291	46,998
	Damage Subtotal	3,455	19,645	20,166	13,443	113,179
Debris Total Weight (Tons)	Brick/Wood	50,367	464,318	538,504	359,002	2,799,319
	Concrete / Steel	4,201	12,811	23,839	15,892	113,336
	Tree	531,459	217,372	122,849	81,899	3,219,340
	Eligible Tree Weight	36,891	60,108	43,672	29,114	378,596

*At Least Moderate Damage means the facility needs to be inspected before reuse.

DAILY RESOURCE REQUIREMENTS AREAS 1-5 (EST)

Charleston County Category	Description	Operational Area 1901 1.64%	Operational Area 1902 19.21%	Operational Area 1903 10.93%	Operational Area 1904 4.92%
Ice per Day	8 lb bag/per person	3,374	50,363	30,843	8,715
8 lb per bag	Total Weight per Operational Area	26,993	402,905	246,744	69,718
	Tons of ice	13	201	123	35
1 pallet/275 bags	Total # pallets per Operational Area	12	183	112	32
20 pallets per truck	Total number of Trucks per day	1	9	6	2
Water	3 one liter bottles/per person/day	10,232	152,732	93,535	26,428
12 bottles per case	Total cases per Operational Area	853	12,728	7,795	2,202
30 lb per case	Total Weight per Operational Area	25,581	381,829	233,837	66,071
	Tons of water	13	191	117	33
70 cases per pallet	Total # pallets per Operational Area	12	182	111	31
20 pallets per truck	Total number of Trucks per day	1	9	6	2
Meals	2/person/day	6,822	101,821	62,357	17,619
12 meal per case	Total cases per Operational Area	568	8,485	5,196	1,468
20 lbs per case	Total Weight per Operational Area	11,369	169,702	103,928	29,365
	Tons of MREs	6	85	52	15
48 cases per pallet	Total # pallets per Operational Area	12	177	108	31

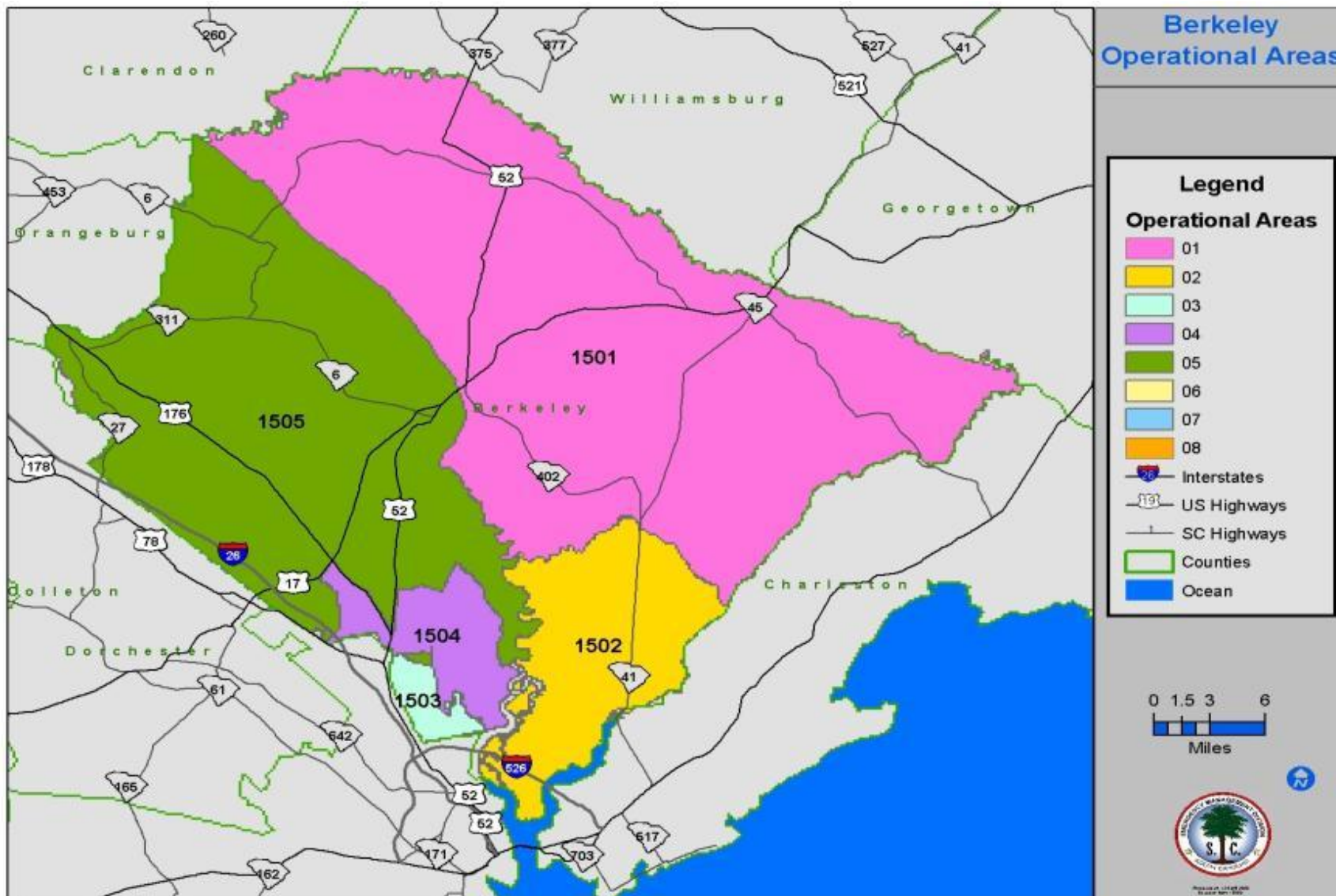
Charleston County Category	Description	Operational Area 1901 1.64%	Operational Area 1902 19.21%	Operational Area 1903 10.93%	Operational Area 1904 4.92%
40 pallets per truck	Total number of Trucks per day	0	4	3	1
	Total number of Trucks	2	23	14	4
	# of type III PODs required	1	10	6	2
	# of personnel required to operate PODs	22	322	197	56

DAILY RESOURCE REQUIREMENTS AREAS 6-9 (EST)

Charleston County Category	Description	Operational Area 1905 .50%	Operational Area 1906 4.10%	Operational Area 1907 19.74%	Operational Area 1908 38.95%	County Total
Ice per Day	8 lb bag/per person	888	4,405	44,489	75,389	218,466
8 lb per bag	Total Weight per Operational Area	7,102	35,236	355,911	603,115	1,747,724
	Tons of ice	4	18	178	302	874
1 pallet/275 bags	Total # pallets per Operational Area	3	16	162	274	794
20 pallets per truck	Total number of Trucks per day	0	1	8	14	40
Water	3 one liter bottles/per person/day	2,692	13,357	134,917	228,627	662,520
12 bottles per case	Total cases per Operational Area	224	1,113	11,243	19,052	55,210
30 lb per case	Total Weight per Operational Area	6,731	33,393	337,294	571,566	1,656,301
	Tons of water	3	17	169	286	828
70 cases per pallet	Total # pallets per Operational Area	3	16	161	272	789
20 pallets per truck	Total number of Trucks per day	0	1	8	14	39
Meals	2/person/day	2,395	16,991	86,525	152,418	446,946
12 meal per case	Total cases per Operational Area	200	1,416	7,210	12,701	37,246
20 lbs per case	Total Weight per Operational Area	3,992	28,318	144,208	254,030	744,910
	Tons of MREs	2	14	72	127	372
48 cases per pallet	Total # pallets per Operational Area	4	29	150	265	776

Charleston County Category	Description	Operational Area 1905 .50%	Operational Area 1906 4.10%	Operational Area 1907 19.74%	Operational Area 1908 38.95%	County Total
40 pallets per truck	Total number of Trucks per day	0	1	4	7	19
	Total number of Trucks	0	2	20	34	99
	# of type III PODs required	0	1	9	15	44
	# of personnel required to operate PODs	6	28	285	482	1,398

BERKELEY COUNTY



OPERATIONAL AREA DESCRIPTIONS

OPERATIONAL AREA: Central Conglomerate			
COUNTY NAME: BERKELEY COUNTY			
COUNTY CODE: Berk			
County/ID	FIPS Code	Location	Description/Boundary
Berk-1	1501	Berkeley Northeast	<ul style="list-style-type: none"> • North and east boundaries are bounded by county line and east side of the Diversion Canal • South Boundary stops before Daniel Island incorporated areas • West boundary is West Branch tributary to the Cooper River • Includes the towns of St. Stephen, Bonneau, and Jamestown.
Berk-2	1502	Berkeley South	<ul style="list-style-type: none"> • Daniels Island and Incorporated areas.
Berk-3	1503	Hanahan	<ul style="list-style-type: none"> • Town of Hanahan and incorporated areas.
Berk-4	1504	Goose Creek	<ul style="list-style-type: none"> • City of Goose Creek, US Naval Weapon Station, and incorporated areas.
Berk-5	1505	Berkeley Northwest	<ul style="list-style-type: none"> • East boundary is bounded by the west side of the Diversion Canal and Lake Marion • North and west boundaries are bounded by county line • South boundary ends before City of Goose Creek incorporated areas • Includes the town of Moncks Corner.

DEMOGRAPHICS AND NEEDS ASSESSMENT AREAS

Berkeley County Category	Description	Operational Area 1501 (14%)	Operational Area 1502 (3.25%)	Operational Area 1503 (14.77%)	Operational Area 1504 (26.76%)	Operational Area 1505 (41.22%)	Berkeley County Total
Demographics	Population	21,544	5,004	22,739	41,199	63,461	153,947
	Total Households	7,569	1,757	7,985	14,468	22,286	54,065
Additional Demographic Information	Age 65 or older	1956	454	2,064	3,739	5,759	13,911
	Non English speaking HH	1,282	298	1,353	2,451	3,775	9,159
	Homeless	217	50	229	415	640	1,552
	HH w/o Transportation	406	0	429	777	1,196	2,902
	Disabled	4,825	1,120	5,090	9,222	14,206	34,463
Initial Shelter	Displaced Households	7,371	1,549	3,972	4,947	7,830	25,669
	Persons per H/H (2.75 people per H/H)	20,270	4,260	10,923	13,604	21,533	70,590
	# of People Seeking Short-term shelter	2,207	404	1,011	1213	2,094	6,929
Animal Response	# of pets needing shelter (60% of HH displaced)	4,423	929	2,383	2,968	4,698	15,401

CRITICAL NEEDS

Needs Assessment	Description	Operational Area 1501 (14%)	Operational Area 1502 (3.25%)	Operational Area 1503 (14.77%)	Operational Area 1504 (26.76%)	Operational Area 1505 (41.22%)	County Total
Drinking Water: 3 1-liter bottles per person per day	Sheltered	2,207	404	1,011	1,213	2,094	6,929
	Persons per HH displaced (minus # in shelters)	18,063	3,856	9,912	12,391	19,439	63,661
	Emergency Workers (2.5 per 100 displaced households)	184	39	99	124	196	642
	Total Liters of water per day	61,364	12,895	33,067	41,184	65,185	213,694
Meals (2 meals per day)	Sheltered	4,414	404	1,011	1,213	52	7,042
	Persons per HH displaced (minus # in shelters)	36,127	7,712	19,824	24,783	38,877	88,445
	Emergency Workers (2.5 per 100 displaced households)	369	77	199	247	392	892
	Total Meals Per Day	40,909	8,193	21,034	26,243	39,321	96,378
Ice = 8 lb. Bag daily	1 bag per/displaced person (minus # in shelters)	18,063	3,856	9,912	12,391	19,439	63,661
	1 bag per person sheltered	2,207	404	1,011	1,213	2,094	4,835
	Total Bags of Ice per Day	20,270	4,260	10,923	13,604	21,533	70,590
Blankets 2 per person	Sheltered	4,414	808	2,022	2,426	4,188	13,858
Cots	1 per sheltered	2,207	404	1,011	1,213	2,094	6,929

Needs Assessment	Description	Operational Area 1501 (14%)	Operational Area 1502 (3.25%)	Operational Area 1503 (14.77%)	Operational Area 1504 (26.76%)	Operational Area 1505 (41.22%)	County Total
	20% overture	441	81	202	243	419	1,386
	Total Cots	2,648	485	1,213	1,456	2,513	8,315
Generators	1 per 385 people sheltered	6	1	3	3	5	18
Portable Toilets	1 per 15 people sheltered	147	27	67	81	140	462

DAMAGE

County Category	Description	Operational Area 1501 (14%)	Operational Area 1502 (3.25%)	Operational Area 1503 (14.77%)	Operational Area 1504 (26.76%)	Operational Area 1505 (41.22%)	Berkeley County Total
Essential Facilities	#Police Stations Total	0	0	1	0	2	3
	*Probability of At Least Moderate Damage >50%						
	#Schools Total	13	4	6	24	24	71
	*Probability of At Least Moderate Damage >50%						
	# Hospitals Total	0	0	0	0	0	0
	*Probability of At Least Moderate Damage >50%						
	# Fire Stations Total	13	4	2	3	13	35
	*Probability of At Least Moderate Damage >50%						
Inventory of Hazardous Materials Sites		98	32	60	71	258	519
Residential Damage	Total # of Houses	7,569	1,757	7,985	14,468	22,286	54,065
	Moderate Damage Count	1,925	424	4,528	8,419	5,904	21,200
	Severe Damage Count	4,153	1,004	3,153	5,885	3,738	17,933
	Completely Destroyed County	11,928	2,467	2,093	3,922	3,912	24,322
	Damage Subtotal	18,006	3,895	9,774	18,226	13,554	63,455

County Category	Description	Operational Area 1501 (14%)	Operational Area 1502 (3.25%)	Operational Area 1503 (14.77%)	Operational Area 1504 (26.76%)	Operational Area 1505 (41.22%)	Berkeley County Total
Debris Total Weight (Tons)	Brick/Wood	312,186	64,461	86,261	147,699	236,488	847,095
	Concrete / Steel	52,665	6,831	3,480	5,239	16,607	84,822
	Tree	5,347,841	917,415	44,551	215,634	1,489,713	8,015,154
	Eligible Tree Weight	223,871	45,871	20,110	44,258	132,961	467,071

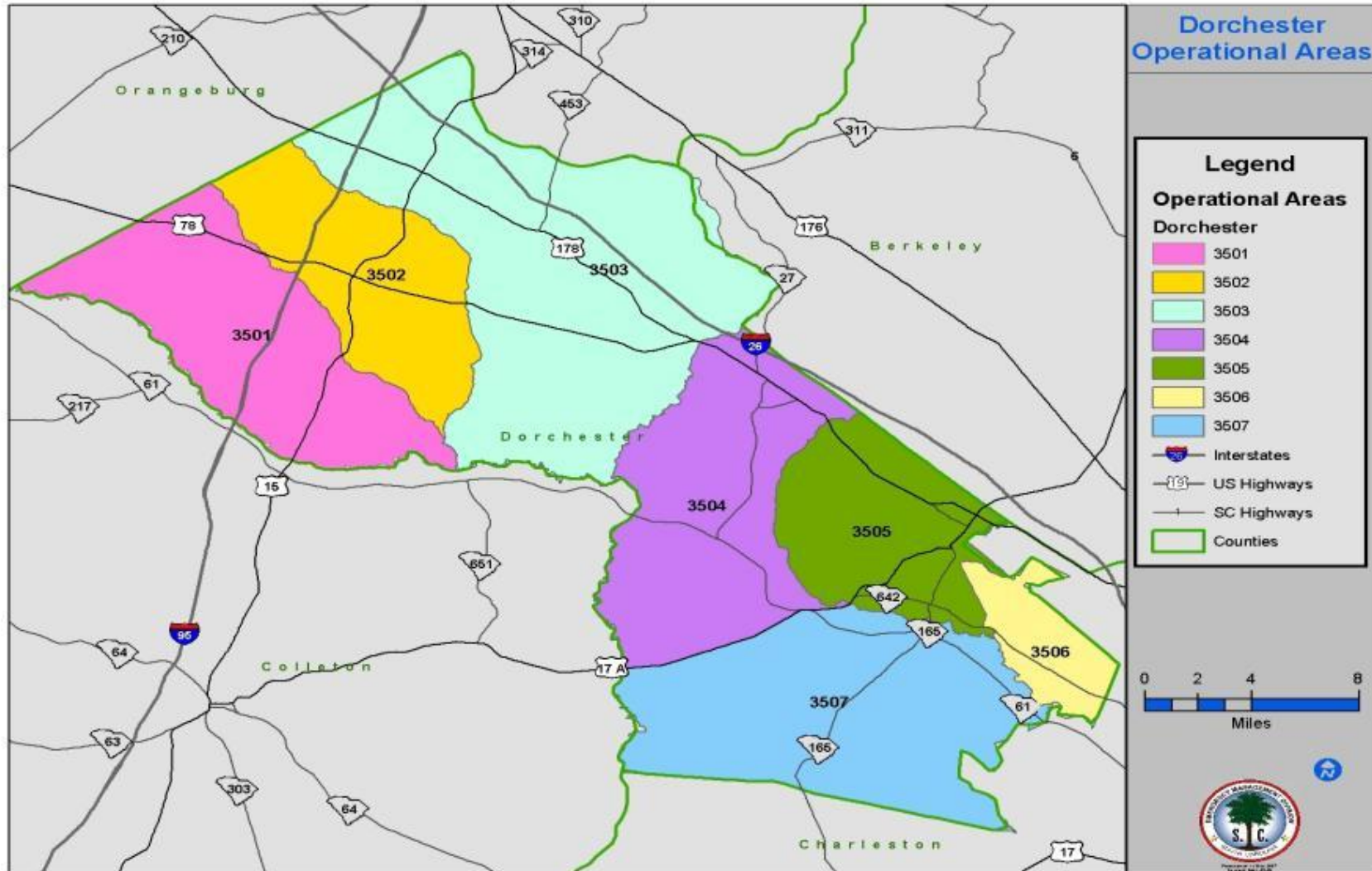
*At Least Moderate Damage means the facility needs to be inspected before reuse.

DAILY RESOURCE REQUIREMENTS AREAS (EST)

Berkeley County Category	Description	Operational Area 1501 14%	Operational Area 1502 3.25%	Operational Area 1503 14.77%	Operational Area 1504 26.76%	Operational Area 1505 41.22%	County Total
Ice	8 lb bag/per person	2,207	404	1,011	1,213	2,094	6,929
8 lb per bag	Total Weight per Operational Area	17,656	3,232	8,088	9,704	16,752	55,432
1 pallet/275 bags	Total # pallets per Operational Area	8	1	4	4	8	25
20 pallets per truck	Total number of Trucks per day	0	0	0	0	0	2
Water	3 one liter bottles/per person/day	61,364	12,895	33,067	41,184	65,185	213,694
12 bottles per case	Total cases per Operational Area	5,114	1,075	2,756	3,432	5,432	17,808
30 lb per case	Total Weight per Operational Area	153,409	32,239	82,667	102,959	162,962	534,236
70 cases per pallet	Total # pallets per Operational Area	73	15	39	49	78	254
20 pallets per truck	Total number of Trucks per day	4	1	2	2	4	13
Meals	2/person/day	40,909	8,597	22,045	27,456	39,321	138,327
12 meal per case	Total cases per Operational Area	3,409	716	1,837	2,288	3,277	11,527
20 lbs per case	Total Weight per Operational Area	68,182	14,328	36,741	45,760	65,535	230,546
	Tons of MREs	34	7	18	23	33	115
48 cases per pallet	Total # pallets per Operational Area	71	15	38	48	68	240
40 pallets per truck	Total number of Trucks per day	2	0	1	1	2	6
	Total number of Trucks	6	1	3	4	6	21
	# of type III PODs required	4	1	4	8	12	29

Berkeley County Category	Description	Operational Area 1501 14%	Operational Area 1502 3.25%	Operational Area 1503 14.77%	Operational Area 1504 26.76%	Operational Area 1505 41.22%	County Total
	# of personnel required to operate PODs	138	32	128	256	384	938

DORCHESTER COUNTY



OPERATIONAL AREA DESCRIPTIONS

OPERATIONAL AREA: Central Conglomerate			
COUNTY NAME: DORCHESTER COUNTY			
COUNTY CODE: Dorc			
County/ID	FIPS Code	Location	Description/Boundary
Dorc-1	3501	Grover	<ul style="list-style-type: none"> • North boundary separated by county line • West boundary is Edisto River • East boundary is the Polk Swamp Tributary • Includes the Grover community
Dorc-2	3502	St. George	<ul style="list-style-type: none"> • North boundary separated by county line • West boundary is the Polk Swamp Tributary • East and South boundary areas are the Indian Field Swamp tributary • Includes the town of St. George
Dorc-3	3503	Harleyville / Reevesville	<ul style="list-style-type: none"> • North and East boundaries are separated by county line • West boundary is the Indian Field Swamp tributary • South boundary is the Four Hole Swamp tributary • Includes the towns of Harleyville and Reevesville

Dorc-4	3504	Givhans	<ul style="list-style-type: none"> • North boundary is the Four Hole Swamp • South boundary is US 17A • East boundary is the Great Cypress Swamp • West boundary is the county line • Includes the towns of Givhans and Ridgeville
Dorc-5	3505	Summerville/ Ladson	<ul style="list-style-type: none"> • North boundary is the Great Cypress Swamp • West boundary is the Ashley River • East Boundary is the county line • South boundary is SR 230 • Includes the town of Summerville and communities of Knightsville and Jedburg
Dorc-6	3506	Dorchester Road corridor	<ul style="list-style-type: none"> • West boundary is Ashley River • East and south boundaries are county line • North boundary is SR 230 • Includes the Dorchester State Park, parts of the Ladson community, and the western portion of the City of North Charleston
Dorc-7	3507	Clubhouse / Deleamar	<ul style="list-style-type: none"> • West, east, and south boundaries are the county line • North boundary is US 17A and the Great Cypress Swamp tributary

DEMOGRAPHICS AND NEEDS ASSESSMENT AREAS 1-4

Dorchester County Category	Description	Operational Area 3501 (2.6%)	Operational Area 3502 (5.3%)	Operational Area 3503 (5.7%)	Operational Area 3504 (5.8%)
Demographics	Population	3,214	6,552	7,046	7,170
	Total Households	977	1,993	2,142	2,180
Additional Demographic Information	Age 65 or older	304	607	660	676
	Non English speaking HH	60	121	131	134
	Homeless	32	65	70	72
	HH w/o Transportation	60	121	131	134
	Disabled	717	1,435	1,560	1,596
Initial Shelter	Displaced Households	447	1,066	849	1,066
	Persons per H/H (2.75 people per H/H)	1,229	2,932	2,335	2,932
	# of People Seeking Short-term shelter	130	336	254	294
Animal Response	# of pets needing shelter (60% of HH displaced)	268	640	509	640

DEMOGRAPHICS AND NEEDS ASSESSMENT AREAS 5-7

Dorchester County Category	Description	Operational Area 3505 (49.3%)	Operational Area 3506 (28.7%)	Operational Area 3507 (2.6%)	Dorchester County Total
Demographics	Population	60,944	35,479	3,214	123,619
	Total Households	18,532	10,788	977	37,589
Additional Demographic Information	Age 65 or older	5,702	3,317	302	11,568
	Non English speaking HH	1,134	660	60	2,300
	Homeless	607	353	32	1,231
	HH w/o Transportation	1,134	660	60	2,300
	Disabled	13,467	7,834	714	27,323
Initial Shelter	Displaced Households	10,655	5,871	491	20,445
	Persons per H/H (2.75 people per H/H)	29,301	16,145	1,350	56,224
	# of People Seeking Short-term shelter	2,558	1,319	121	5,012
Animal Response	# of pets needing shelter (60% of HH displaced)	6,393	3,523	295	12,267

CRITICAL NEEDS AREAS 1-4

Needs Assessment	Description	Operational Area 3501 (2.6%)	Operational Area 3502 (5.3%)	Operational Area 3503 (5.7%)	Operational Area 3504 (5.8%)
Drinking Water: 3 1-liter bottles per person per day	Sheltered	130	336	254	294
	Persons per HH displaced (minus # in shelters)	1,099	2,596	2,081	2,638
	Emergency Workers (2.5 per 100 displaced households)	11	27	21	27
	Total Liters of water per day	3,721	8,874	7,068	8,874
Meals (2 meals per day)	Sheltered	260	672	508	588
	Persons per HH displaced (minus # in shelters)	2,199	5,191	4,162	5,275
	Emergency Workers (2.5 per 100 displaced households)	22	53	42	53
	Total Meals Per Day	2,481	5,916	4,712	5,916
Ice = 8 lb. Bag daily	1 bag per/displaced person (minus # in shelters)	1,099	2,596	2,081	2,638
	1 bag per person sheltered	130	336	254	294
	Total Bags of Ice per Day	1,229	2,932	2,335	2,932
Blankets 2 per person	Sheltered	260	672	508	588
Cots	1 per sheltered	130	336	254	294
	20% overture	26	67	51	59
	Total Cots	156	403	305	353
Generators	1 per 385 people sheltered	0	1	1	1
Portable Toilets	1 per 15 people sheltered	9	22	17	20

CRITICAL NEEDS AREAS 5-7

Needs Assessment	Description	Operational Area 3505 (49.3%)	Operational Area 3506 (28.7%)	Operational Area 3507 (2.6%)	County Total
Drinking Water: 3 liter bottle per person per day	Sheltered	2,558	1,319	121	5,012
	Persons per HH displaced (minus # in shelters)	26,743	14,826	1,229	33,716
	Emergency Workers (2.5 per 100 displaced households)	266	147	12	511
	Total Liters of water per day	88,703	48,876	4,088	117,241
Meals (2 meals per day)	Sheltered	5116	2638	242	10,024
	Persons per HH displaced (minus # in shelters)	53,487	29,653	2,459	102,424
	Emergency Workers (2.5 per 100 displaced households)	533	294	25	1,022
	Total Meals Per Day	59,135	32,584	2,725	113,470
Ice = 8 lb. Bag daily	1 bag per/displaced person (minus # in shelters)	26,743	14,826	1,229	51,212
	1 bag per person sheltered	2,558	1,319	121	5,012
	Total Bags of Ice per Day	29,301	16,145	1,350	56,224
Blankets 2 per person	Sheltered	5,116	2,638	242	10,024
Cots	1 per sheltered	2,558	1,319	121	5,012
	20% overture	512	264	24	1,002
	Total Cots	3,070	1,583	145	6,014
Generators	1 per 385 people sheltered	7	3	0	9
Portable Toilets	1 per 15 people sheltered	171	88	8	334

DAMAGE AREAS 1-4

County Category	Description	Operational Area 3501 (2.6%)	Operational Area 3502 (5.3%)	Operational Area 3503 (5.7%)	Operational Area 3504 (5.8%)
Essential Facilities	#Police Stations Total	0	1	1	1
	*Probability of At Least Moderate Damage >50%	0	1	0	1
	#Schools Total	0	3	3	2
	*Probability of At Least Moderate Damage >50%	0	0	0	2
	# Hospitals Total	0	0	0	0
	*Probability of At Least Moderate Damage >50%	0	0	0	0
	# Fire Stations Total	4	1	3	3
	*Probability of At Least Moderate Damage >50%	0	1	0	3
Inventory of Hazardous Materials Sites		7	34	73	34
Residential Damage	Total # of Houses	1,440	2,504	2,878	2,280
	Moderate Damage Count	438	813	877	706
	Severe Damage Count	242	527	455	489
	Completely Destroyed County	230	440	411	531
	Damage Subtotal	910	1,780	1,743	1,726
Debris Total Weight (Tons)	Brick/Wood	12,120	29,800	22,614	29,001
	Concrete / Steel	911	2,027	1,533	3,058
	Tree	420,602	318,860	840,003	683,473

County Category	Description	Operational Area 3501 (2.6%)	Operational Area 3502 (5.3%)	Operational Area 3503 (5.7%)	Operational Area 3504 (5.8%)
	Eligible Tree Weight	100,944	114,789	201,601	164,033

*At Least Moderate Damage means the facility needs to be inspected before reuse.

DAMAGE AREAS 5-7

County Category	Description	Operational Area 3505 (49.3%)	Operational Area 3506 (28.7%)	Operational Area 3507 (2.6%)	Dorchester County Total
Essential Facilities	#Police Stations Total	1	0	0	4
	*Probability of At Least Moderate Damage >50%	1	0	0	3
	#Schools Total	12	5	1	26
	*Probability of At Least Moderate Damage >50%	12	5	1	20
	# Hospitals Total	0	1	0	1
	*Probability of At Least Moderate Damage >50%	0	1	0	1
	# Fire Stations Total	3	2	1	17
	*Probability of At Least Moderate Damage >50%	3	2	1	10
Inventory of Hazardous Materials Sites		153	54	20	375
Residential Damage	Total # of Houses	21,249	12,729	1,246	44,326
	Moderate Damage Count	6,665	4,076	390	13,965
	Severe Damage Count	5,107	3,140	273	10,233
	Completely Destroyed County	4,320	2,408	244	8,584
	Damage Subtotal	16,092	9,624	907	32,782
Debris Total Weight (Tons)	Brick/Wood	280,031	157,125	13,162	543,853
	Concrete / Steel	14,317	5,794	795	28,435
	Tree	344,859	133,816	647,952	3,389,565

County Category	Description	Operational Area 3505 (49.3%)	Operational Area 3506 (28.7%)	Operational Area 3507 (2.6%)	Dorchester County Total
	Eligible Tree Weight	664,671	319,590	155,508	1,721,136

*At Least Moderate Damage means the facility needs to be inspected before reuse.

DAILY RESOURCE REQUIREMENTS AREAS 1-4 (EST)

Dorchester County Category	Description	Operational Area 3501 (2.6%)	Operational Area 3502 (5.3%)	Operational Area 3503 (5.7%)	Operational Area 3504 (5.8%)
Ice	8 lb bag/per person	1,229	2,932	2,335	2,932
8 lb per bag	Total Weight per Operational Area	9,834	23,452	18,678	23,452
	Tons of Ice	5	12	9	12
1 pallet/275 bags	Total # pallets per Operational Area	4	11	8	11
20 pallets per truck	Total number of Trucks per day	0	1	0	1
Water	3 one liter bottles/per person/day	3,721	8,874	7,068	8,874
12 bottles per case	Total cases per Operational Area	310	740	589	740
30 lb per case	Total Weight per Operational Area	9,303	22,186	17,670	22,186
	Tons of water	5	11	9	11
70 cases per pallet	Total # pallets per Operational Area	4	11	8	11
20 pallets per truck	Total number of Trucks per day	0	1	0	1
Meals	2/person/day	2,481	5,916	4,712	5,916
12 meal per case	Total cases per Operational Area	207	493	393	493
20 lbs per case	Total Weight per Operational Area	4,135	9,861	7,853	9,861
	Tons of MREs	2	5	4	5
48 cases per pallet	Total # pallets per Operational Area	4	10	8	10
40 pallets per truck	Total number of Trucks per day	0	0	0	0

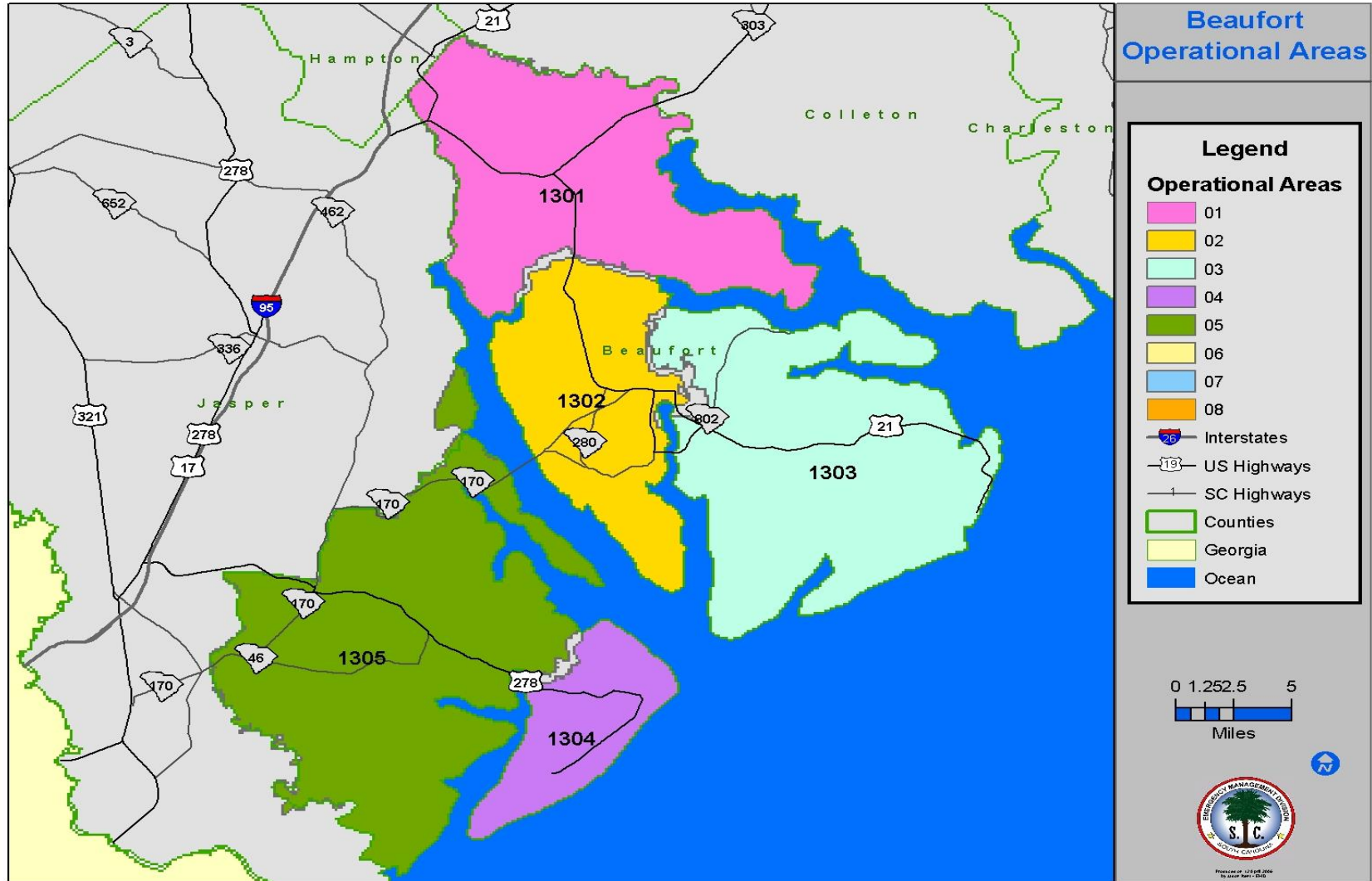
Dorchester County Category	Description	Operational Area 3501 (2.6%)	Operational Area 3502 (5.3%)	Operational Area 3503 (5.7%)	Operational Area 3504 (5.8%)
	Total number of Trucks	1	1	1	1
	# of type III PODs required	1	1	1	1
	# of personnel required to operate PODs	21	42	45	46

DAILY RESOURCE REQUIREMENTS AREAS 5-7 (EST)

Dorchester County Category	Description	Operational Area 3505 (49.3%)	Operational Area 3506 (28.7%)	Operational Area 3507 (2.6%)	County Total
Ice	8 lb bag/per person	29,301	16,145	1,350	56,224
8 lb per bag	Total Weight per Operational Area	234,410	129,162	10,802	449,790
	Tons of Ice	117	65	5	225
1 pallet/275 bags	Total # pallets per Operational Area	107	59	5	204
20 pallets per truck	Total number of Trucks per day	5	3	0	10
Water	3 one liter bottles/per person/day	88,703	48,876	4,088	170,205
12 bottles per case	Total cases per Operational Area	7,392	4,073	341	14,184
30 lb per case	Total Weight per Operational Area	221,757	122,190	10,219	425,512
	Tons of water	111	61	5	213
70 cases per pallet	Total # pallets per Operational Area	106	58	5	203
20 pallets per truck	Total number of Trucks per day	5	3	0	10
Meals	2/person/day	59,135	32,584	2,725	113,470
12 meal per case	Total cases per Operational Area	4,928	2,715	227	9,456
20 lbs per case	Total Weight per Operational Area	98,559	54,307	4,542	189,116
	Tons of MREs	45	27	2	95
48 cases per pallet	Total # pallets per Operational Area	103	57	5	199
40 pallets per truck	Total number of Trucks per day	2	1	0	5
	Total number of Trucks	13	7	1	25

Dorchester County Category	Description	Operational Area 3505 (49.3%)	Operational Area 3506 (28.7%)	Operational Area 3507 (2.6%)	County Total
	# of type III PODs required	12	7	1	25
	# of personnel required to operate PODs	390	227	21	791

BEAUFORT COUNTY



OPERATIONAL AREA DESCRIPTIONS

OPERATIONAL AREA: Southern Conglomerate			
COUNTY NAME: BEAUFORT COUNTY			
COUNTY CODE: Beau			
County/ID	FIPS Code	Location	Description/Boundary
Beau -1	1301	Sheldon	<ul style="list-style-type: none"> • West boundary is the county line and the Pocotaligo River • North boundary is the county line / Combaee River • East and southern boundary is the Coosaw River • Includes Chisolm and Williman Islands
Beau -2	1302	Beaufort	<ul style="list-style-type: none"> • Includes the entirety of Port Royal Island as bordered by the Broad, Beaufort, and Coosaw Rivers • Includes Beaufort and Parris Island Marine Corps Recruit Depot and the US Marine Corps Air Station
Beau -3	1303	St. Helena Island	<ul style="list-style-type: none"> • Includes the islands of St. Helena, Lady's, and Fripp; also Huntington State Park as bounded by Port Royal Sound, the Atlantic Ocean, and St. Helena Sound
Beau -4	1304	Hilton Head	<ul style="list-style-type: none"> • Include the entire island of Hilton Head as bounded by Port Royal Sound, the Atlantic Ocean, and Calibogue Sound
Beau -5	1305	Bluffton	<ul style="list-style-type: none"> • West and south boundary is the county line • North and east boundary is the Broad River • Includes Bull, Daufuskie, and Pinckney Islands

DEMOGRAPHICS AND NEEDS ASSESSMENT

Beaufort County Category	Description	Operational Area 1301 (3.43%)	Operational Area 1302 (36.82%)	Operational Area 1303 (15.55%)	Operational Area 1304 (28.45%)	Operational Area 1305 (15.75%)	Beaufort County Total
Demographics	Population	4,995	53,620	22,645	41,431	22,936	145,627
	Total Households	2,172	23,313	9,846	18,013	9,972	63,316
Additional Demographic Information	Age 65 or older	834	8,955	3,782	6,919	3,830	24,320
	Non English speaking HH	495	5,308	2,245	4,102	2,271	14,417
	Homeless	50	536	226	414	229	1,456
	HH w/o Transportation	93	1,002	423	775	429	2,723
	Disabled	1,109	11,904	5,027	9,198	5,092	32,329
Initial Shelter	Displaced Households	383	10,091	6,616	13,094	6,647	36,831
	Persons per H/H (2.3 people per H/H)	881	23,209	15,217	30,116	15,288	84,711
	# of People Seeking Short-term shelter	135	2,711	1,744	2,780	1,436	8,806
Animal Response	# of pets needing shelter (60% of HH Seeking Shelter)	35	707	455	725	375	2,297

CRITICAL NEEDS

Needs Assessment	Description	Operational Area 1301 (3.43%)	Operational Area 1302 (36.82%)	Operational Area 1303 (15.55%)	Operational Area 1304 (28.45%)	Operational Area 1305 (15.75%)	Beaufort County Total
Drinking Water: 3 1-liter bottle per person per day	Sheltered	135	2,711	1,744	2,780	1,436	8,806
	Persons per HH displaced (minus # in shelters)	746	20,498	13,473	27,336	13,852	75,905
	Emergency Workers (2.5 per 100 displaced households)	10	252	165	327	166	921
	Total Liters of water per day	2,671	70,385	46,147	91,331	46,363	256,896
Meals (2 meals per day)	Sheltered	270	5,422	3,488	5,560	2,872	17,612
	Persons per HH displaced (minus # in shelters)	1,492	40,997	26,946	54,672	27,704	151,811
	Emergency Workers (2.5 per 100 displaced households)	19	505	331	655	332	1,842
	Total Meals Per Day	1,781	46,923	30,764	60,887	30,909	171,264
Ice = 8 lb. Bag daily	1 bag per/displaced person (minus # in shelters)	746	20,498	13,473	27,336	13,852	75,905
	1 bag per person sheltered	135	2,711	1,744	2,780	1,436	7,370
	Total Bags of Ice per Day	881	23,209	15,217	30,116	15,288	84,711
Blankets 2 per person	Sheltered	270	5,422	3,488	5,560	2,872	17,612
Cots	1 per sheltered	135	2,711	1,744	2,780	1,436	8,806

Needs Assessment	Description	Operational Area 1301 (3.43%)	Operational Area 1302 (36.82%)	Operational Area 1303 (15.55%)	Operational Area 1304 (28.45%)	Operational Area 1305 (15.75%)	Beaufort County Total
	20% overture	27	542	349	556	287	1,761
	Total Cots	162	3,253	2,093	3,336	1,723	10,567
Generators	1 per 385 people sheltered	0	7	5	7	4	23
Portable Toilets	1 per 15 people sheltered	9	181	116	185	96	587

DAMAGE

County Category	Description	Operational Area 1301 (3.43%)	Operational Area 1302 (36.82%)	Operational Area 1303 (15.55%)	Operational Area 1304 (28.45%)	Operational Area 1305 (15.75%)	Beaufort County Total
Essential Facilities (Based on 2000 HAZUS data)	#Police Stations Total	0	0	0	0	1	1
	*Probability of At Least Moderate Damage >50%	0	0	0	0	0	0
	#Schools Total	2	24	6	9	3	44
	*Probability of At Least Moderate Damage >50%	1	6	1	2	1	11
	# Hospitals Total	0	2	0	1	0	3
	*Probability of At Least Moderate Damage >50%	0	0	0	6	0	6
	# Fire Stations Total	0	9	6	6	4	25
	*Probability of At Least Moderate Damage >50%	0	2	1	1	1	5
Inventory of Hazardous Materials Sites (Based on 2000 HAZUS data)		2	35	12	16	8	73
Residential Damage	Total # of Houses	3,970	34,137	23,076	47,185	22,621	130,989
	Moderate Damage Count	1,094	9,631	4,586	11,224	5,500	32,035
	Severe Damage Count	357	9,199	6,479	16,276	6,751	39,062
	Completely Destroyed County	375	8,740	9,930	15,531	7,689	42,265

County Category	Description	Operational Area 1301 (3.43%)	Operational Area 1302 (36.82%)	Operational Area 1303 (15.55%)	Operational Area 1304 (28.45%)	Operational Area 1305 (15.75%)	Beaufort County Total
	Damage Subtotal	1,826	27,570	20,995	43,031	19,940	113,362
Debris Total Weight (Tons)	Brick/Wood	10,161	299,111	247,202	532,846	211,793	1,301,113
	Concrete / Steel	582	20,101	21,488	15,875	11,616	69,662
	Tree	416,654	318,643	600,115	243,350	951,124	2,529,886
	Eligible Tree Weight	16,666	74,773	69,388	139,685	82,612	383,124

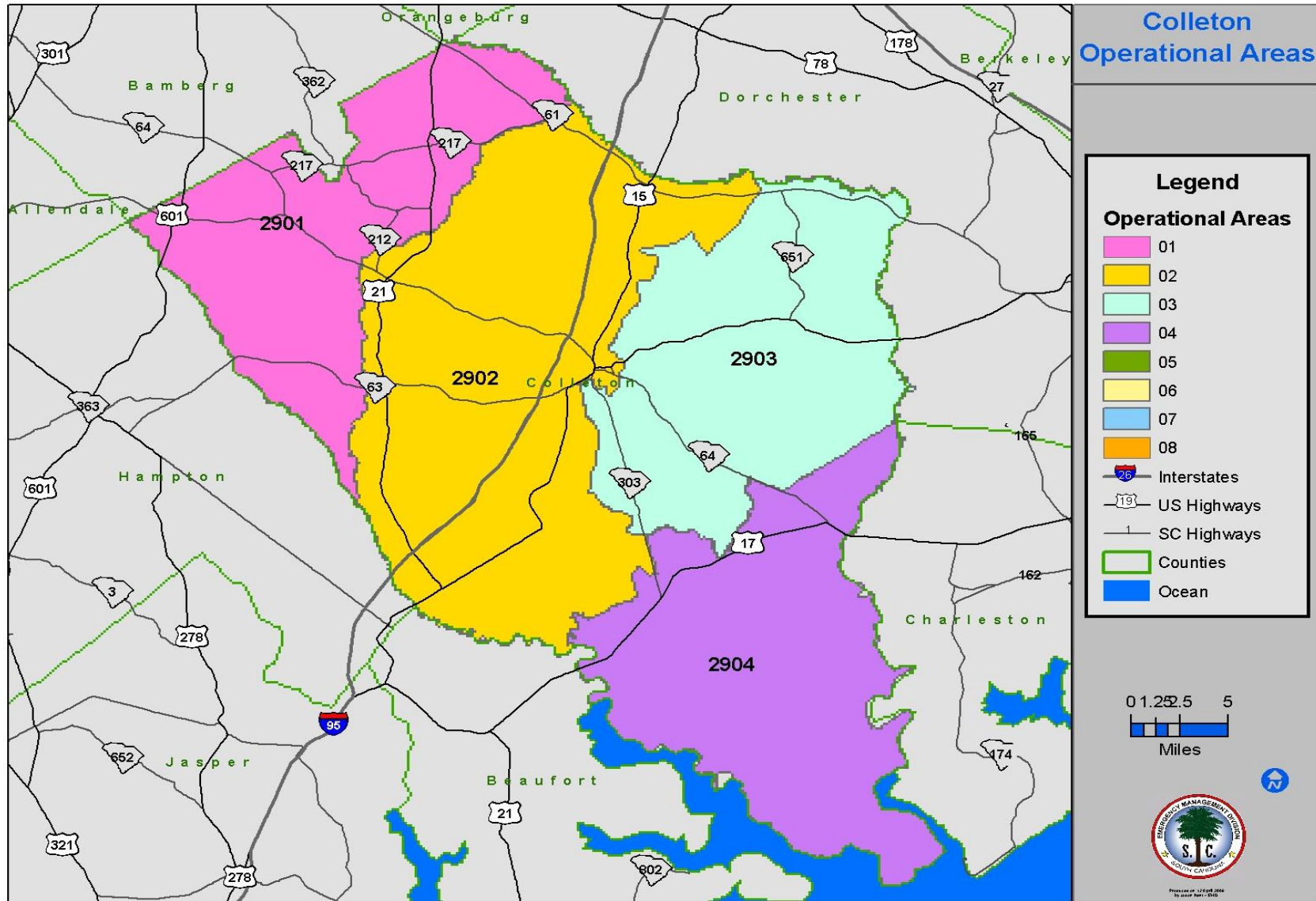
*At Least Moderate Damage means the facility needs to be inspected before reuse.

DAILY RESOURCE REQUIREMENTS (EST)

Beaufort County Category	Description	Operational Area 1301 (3.43%)	Operational Area 1302 (36.82%)	Operational Area 1303 (15.55%)	Operational Area 1304 (28.45%)	Operational Area 1305 (15.75%)	Beaufort County Total
Ice	8 lb bag/per person	881	23,209	15,217	30,116	15,288	84,711
8 lb per bag	Total Weight per Operational Area	7,047	185,674	121,734	240,930	122,305	677,690
	Tons of ice	4	93	61	120	61	339
1 pallet/275 bags	Total # pallets per Operational Area	3	84	55	110	56	308
20 pallets per truck	Total number of Trucks per day	0	4	3	5	3	15
Water	3 one liter bottles/per person/day	2,671	70,385	46,147	91,331	46,363	256,896
12 bottles per case	Total cases per Operational Area	223	5,865	3,846	7,611	3,864	21,408
30 lb per case	Total Weight per Operational Area	6,679	175,962	115,367	228,327	115,907	642,241
	Tons of water	3	88	58	114	58	321
70 cases per pallet	Total # pallets per Operational Area	3	84	55	109	55	306
20 pallets per truck	Total number of Trucks per day	0	4	3	5	3	15
Meals	2/person/day	1,781	46,923	30,764	60,887	30,909	171,264
12 meal per case	Total cases per Operational Area	148	3,910	2,564	5,074	2,576	14,272
20 lbs per case	Total Weight per Operational Area	2,968	78,205	51,274	101,479	51,514	285,440
	Tons of MREs	1	39	26	51	26	143
48 cases per pallet	Total # pallets per Operational Area	3	81	53	106	54	297

Beaufort County Category	Description	Operational Area 1301 (3.43%)	Operational Area 1302 (36.82%)	Operational Area 1303 (15.55%)	Operational Area 1304 (28.45%)	Operational Area 1305 (15.75%)	Beaufort County Total
40 pallets per truck	Total number of Trucks per day	0	2	1	3	1	7
	Total number of Trucks	0	10	7	14	7	38
	# of type III PODs required	0	5	3	6	3	17
	# of personnel required to operate PODs	6	149	97	193	98	542

COLLETON COUNTY



OPERATIONAL AREA DESCRIPTIONS

OPERATIONAL AREA: Southern Conglomerate			
COUNTY NAME: COLLETON COUNTY			
COUNTY CODE: Coll			
County/ID	FIPS Code	Location	Description/Boundary
Coll -1	2901	Lodge	<ul style="list-style-type: none"> • West and south borders are the county lines • East and south boundaries are generally a line following Buckhead Creek to the Little Salkehatchie River to the county line • Includes Hodge, Williams, and Smokes.
Coll -2	2902	Walterboro	<ul style="list-style-type: none"> • West and south boundary generally a line following Buckhead Creek to the Little Salkehatchie River to the county line • North boundary is the county line and eastern boundary from the north and the county line following Sidneys Rd., Round O Rd., Pleasant Grove Rd., Stock Farm Rd., Burlington Rd., Ivanhoe Rd. to Walterboro, east of Walterboro to Jefferies Road, Asheboro Rd., S.C. 303, Fox Creek Rd., Cuckold Creek to the county line • Includes the Town of Walterboro
Coll -3	2903	Cottageville	<ul style="list-style-type: none"> • Western boundary from the north and the county line following Sidneys Rd., Round O Rd., Pleasant Grove Rd., Stock Farm Rd., Burlington Rd., Ivanhoe Rd. to Walterboro, east of Walterboro to Jefferies Rd., Asheboro Rd • North and east boundary is the county line • South boundary is Lowndes Landing Rd., Parkers Ferry Rd., Highway 64, Fuller Swamp Creek, and Horseshoe Creek

			<ul style="list-style-type: none"> • Includes Cottageville.
Coll -4	2904	Donnelley Wildlife Management Area	<ul style="list-style-type: none"> • West, south and east boundary is the Combahee River to the Edisto River and the Saint Helena Sound • The north boundary is Lowndes Landing Rd., Parkers Ferry Rd., Highway 64, Fuller Swamp Creek, Horseshoe Creek, and Fox Creek Road, Cuckold Creek to the county line • Includes the Donnelley Wildlife Management Area, Bear Island Management Area and St. Helena Sound Heritage Trust Preserve.

DEMOGRAPHICS AND NEEDS ASSESSMENT

Colleton County Category	Description	Operational Area 2901 (10.40%)	Operational Area 2902 (50.87%)	Operational Area 2903 (32.42%)	Operational Area 2904 (6.32%)	Colleton County Total
Demographics	Population	4,105	20,077	12,796	2,494	39,472
	Total Households	1,785	8,729	5,563	1,084	17,162
Additional Demographic Information	Age 65 or older	538	2,630	1,676	327	5,170
	Non English speaking HH	119	582	371	72	1,145
	Homeless	41	201	128	25	395
	HH w/o Transportation	77	375	239	47	738
	Disabled	911	4,457	2,841	554	8,763
Initial Shelter	Displaced Households	20	1,251	2,151	701	4,123
	Persons per H/H (2.3 people per H/H)	46	2,877	4,947	1,612	9,483
	# of People Seeking Short-term shelter	6	389	638	188	1,221
Animal Response	# of pets needing shelter (60% of HH Seeking Shelter)	2	101	166	49	319

CRITICAL NEEDS

Needs Assessment	Description	Operational Area 2901 (10.40%)	Operational Area 2902 (50.87%)	Operational Area 2903 (32.42%)	Operational Area 2904 (6.32%)	Colleton County Total
Drinking Water: 3 1-liter bottle per person per day	Sheltered	6	389	638	188	1,221
	Persons per HH displaced (minus # in shelters)	40	2,488	4,309	1,424	8,262
	Emergency Workers (2.5 per 100 displaced households)	1	31	54	18	103
	Total Liters of water per day	140	8,726	15,003	4,889	28,758
Meals (2 meals per day)	Sheltered	12	778	1,276	376	2,442
	Persons per HH displaced (minus # in shelters)	80	4,977	8,619	2,849	16,524
	Emergency Workers (2.5 per 100 displaced households)	1	63	108	35	206
	Total Meals Per Day	93	5,817	10,002	3,260	19,172
Ice = 8 lb. Bag daily	1 bag per/displaced person (minus # in shelters)	40	2,488	4,309	1,424	8,262
	1 bag per person sheltered	6	389	638	188	1,221
	Total Bags of Ice per Day	46	2,877	4,947	1,612	9,483
Blankets 2 per person	Sheltered	12	778	1,276	376	2,442
Cots	1 per sheltered	6	389	638	188	1,221
	20% overture	1	78	128	38	244
	Total Cots	7	467	766	226	1,465
Generators	1 per 385 people sheltered	0	1	2	0	3

Needs Assessment	Description	Operational Area 2901 (10.40%)	Operational Area 2902 (50.87%)	Operational Area 2903 (32.42%)	Operational Area 2904 (6.32%)	Colleton County Total
Portable Toilets	1 per 15 people sheltered	0	26	43	13	81

DAMAGE

County Category	Description	Operational Area 2901 (10.40%)	Operational Area 2902 (50.87%)	Operational Area 2903 (32.42%)	Operational Area 2904 (6.32%)	Colleton County Total
Essential Facilities (Based on 200 HAZUS data)	#Police Stations Total	0	1	0	0	1
	*Probability of At Least Moderate Damage >50%	0	0	0	0	0
	#Schools Total	2	18	6	4	30
	*Probability of At Least Moderate Damage >50%	0	6	2	1	9
	# Hospitals Total	0	1	0	0	1
	*Probability of At Least Moderate Damage >50%	0	0	0	0	0
	# Fire Stations Total	3	6	3	3	15
	*Probability of At Least Moderate Damage >50%	0	2	1	1	4
Inventory of Hazardous Materials Sites (Based on 200 HAZUS data)		5	26	9	7	47
Residential Damage	Total # of Houses	1,701	7,833	5,385	2,587	17,506
	Moderate Damage Count	114	2,082	1,640	654	4,490
	Severe Damage Count	12	731	932	787	2,462
	Completely Destroyed County	11	516	1,140	831	2,498
	Damage Subtotal	137	3,329	3,712	2,272	9,450

County Category	Description	Operational Area 2901 (10.40%)	Operational Area 2902 (50.87%)	Operational Area 2903 (32.42%)	Operational Area 2904 (6.32%)	Colleton County Total
Debris Total Weight (Tons)	Brick/Wood	1,369	39,808	57,725	46,915	145,817
	Concrete / Steel	8	1,277	3,677	2,694	7,656
	Tree	212,839	805,365	840,252	866,032	2,724,488
	Eligible Tree Weight	6,385	41,633	39,857	25,981	113,856

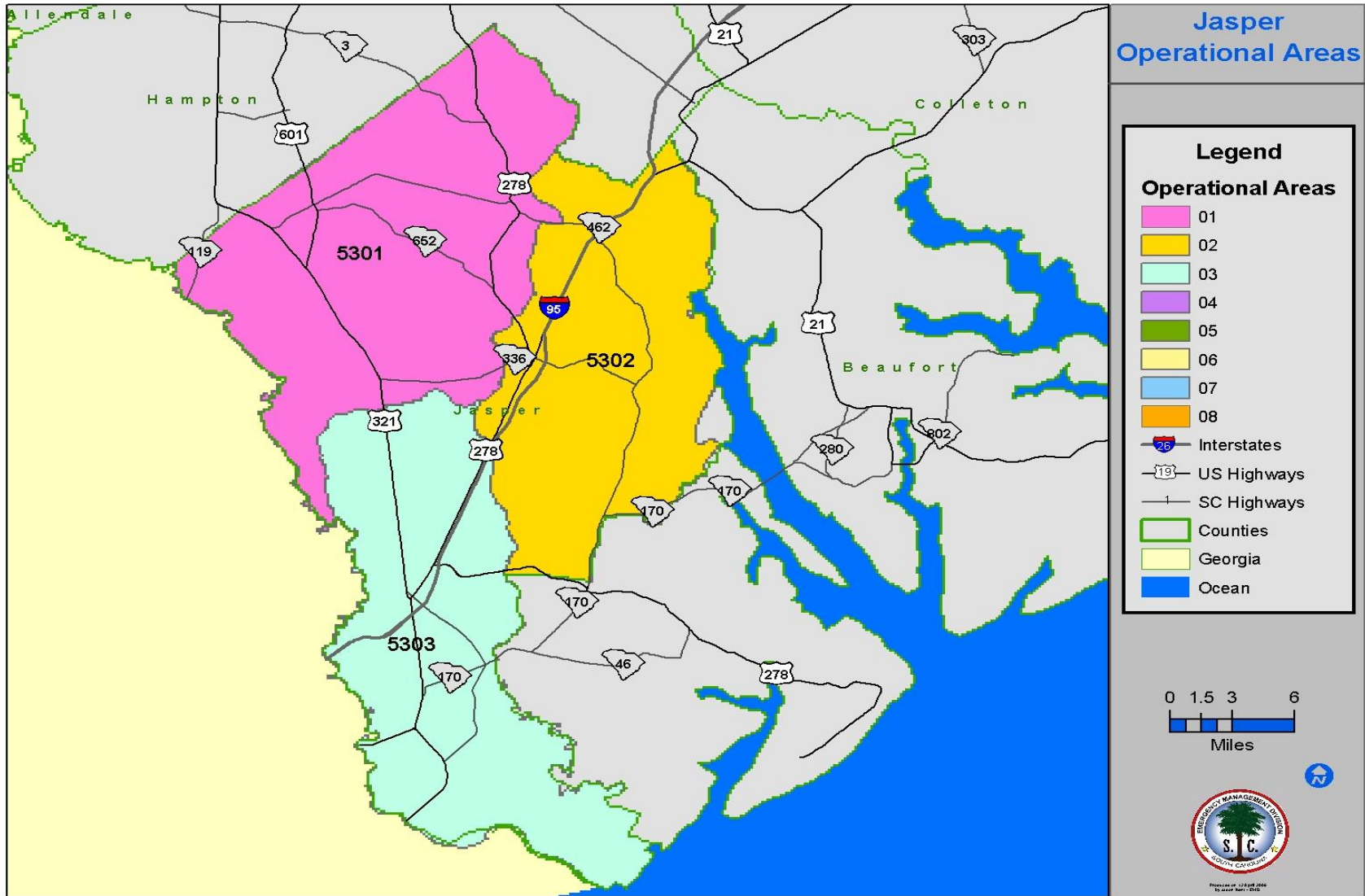
*At Least Moderate Damage means the facility needs to be inspected before reuse.

RESOURCE REQUIREMENTS

Colleton County Category	Description	Operational Area 2901 (10.40%)	Operational Area 2902 (50.87%)	Operational Area 2903 (32.42%)	Operational Area 2904 (6.32%)	Colleton County Total
Ice	8 lb bag/per person	46	2,877	4,947	1,612	9,483
8 lb per bag	Total Weight per Operational Area	368	23,018	39,578	12,898	75,863
	Tons of ice	0	12	20	6	38
1 pallet/275 bags	Total # pallets per Operational Area	0	10	18	6	34
20 pallets per truck	Total number of Trucks per day	0	1	1	0	2
Water	3 one liter bottles/per person/day	140	8,726	15,003	4,889	28,758
12 bottles per case	Total cases per Operational Area	12	727	1,250	407	2,396
30 lb per case	Total Weight per Operational Area	349	21,814	37,508	12,224	71,895
	Tons of water	0	11	19	6	36
70 cases per pallet	Total # pallets per Operational Area	0	10	18	6	34
20 pallets per truck	Total number of Trucks per day	0	1	1	0	2
Meals	2/person/day	93	5,817	10,002	3,260	19,172
12 meal per case	Total cases per Operational Area	8	485	834	272	1,598
20 lbs per case	Total Weight per Operational Area	155	9,695	16,670	5,433	31,953
	Tons of MREs	0	5	8	3	16
48 cases per pallet	Total # pallets per Operational Area	0	10	17	6	33
40 pallets per truck	Total number of Trucks per day	0	0	0	0	1

Colleton County Category	Description	Operational Area 2901 (10.40%)	Operational Area 2902 (50.87%)	Operational Area 2903 (32.42%)	Operational Area 2904 (6.32%)	Colleton County Total
	Total number of Trucks	0	1	2	1	4
	# of type III PODs required	0	1	1	0	2
	# of personnel required to operate PODs	0	18	32	10	61

JASPER COUNTY



OPERATIONAL AREA DESCRIPTIONS

OPERATIONAL AREA: Southern Conglomerate			
COUNTY NAME: JASPER COUNTY			
COUNTY CODE: Jasp			
County/ID	FIPS Code	Location	Boundary
Jasp -1	5301	Pineland	<ul style="list-style-type: none"> • North and west boundaries are county lines • South boundary is the Savannah River / State line • East boundary from the county line generally south along Stock Farm Road, Morgan Road, Long Haul Rd., Malphrus Rd. easterly parallel to Tarboro Rd. ending at State Dam Rd • Includes Towns of Robertville, Tarboro Pineland, and Gillisonville
Jasp -2	5302	Ridgeland	<ul style="list-style-type: none"> • North and east boundary is the county line • South and west boundaries from the north along Stock Farm Rd., Morgan Rd., Long Haul Rd., Malphrus Rd. easterly parallel to Tarboro Rd. ending at State Dam Rd. South • Includes the Towns of Ridgeland, Coosawhatchie, and Grahamville
Jasp -3	5303	Hardeeville	<ul style="list-style-type: none"> • West boundary is the Savannah River/State line • North is State Dam Rd., Floyd Rd., Medwestvaco Rd. then south along the stream to the State line • Includes Hardeeville, Jasper State Park and Savannah River National Wildlife Refuge

DEMOGRAPHICS AND NEEDS ASSESSMENT

Jasper County Category	Description	Operational Area 5301 (25.37%)	Operational Area 5302 (42.92%)	Operational Area 5303 (31.71%)	Jasper County Total
Demographics	Population	5,533	9,361	6,916	21,810
	Total Households	2,406	4,070	3,007	9,483
Additional Demographic Information	Age 65 or older	592	1,002	740	2,334
	Non English speaking HH	426	721	533	1,679
	Homeless	56	94	69	218
	HH w/o Transportation	103	175	129	408
	Disabled	1,228	2,078	1,535	4,842
Initial Shelter	Displaced Households	666	1,024	1,166	2,856
	Persons per H/H (2.3 people per H/H)	1,532	2,355	2,682	6,569
	# of People Seeking Short-term shelter	205	309	362	876
Animal Response	# of pets needing shelter (60% of HH Seeking Shelter)	53	81	94	229

CRITICAL NEEDS

Needs Assessment	Description	Operational Area 5301 (25.37%)	Operational Area 5302 (42.92%)	Operational Area 5303 (31.71%)	Jasper County Total
Drinking Water: 3 1-liter bottle per person per day	Sheltered	205	309	362	876
	Persons per HH displaced (minus # in shelters)	1,327	2,046	2,320	5,693
	Emergency Workers (2.5 per 100 displaced households)	17	26	29	71
	Total Liters of water per day	4,645	7,142	8,133	19,921
Meals (2 meals per day)	Sheltered	410	618	724	1,752
	Persons per HH displaced (minus # in shelters)	2,654	4,092	4,640	11,386
	Emergency Workers (2.5 per 100 displaced households)	33	51	58	143
	Total Meals Per Day	3,097	4,762	5,422	13,280
Ice = 8 lb. Bag daily	1 bag per/displaced person (minus # in shelters)	1,327	2,046	2,320	5,693
	1 bag per person sheltered	205	309	362	876
	Total Bags of Ice per Day	1,532	2,355	2,682	6,569
Blankets 2 per person	Sheltered	410	618	724	1,752
Cots	1 per sheltered	205	309	362	876
	20% overture	41	62	72	175
	Total Cots	246	371	434	1,051
Generators	1 per 385 people sheltered	1	1	1	2
Portable Toilets	1 per 15 people sheltered	14	21	24	58

DAMAGE

County Category	Description	Operational Area 5301 (25.37%)	Operational Area 5302 (42.92%)	Operational Area 5303 (31.71%)	Jasper County Total
Essential Facilities (Based on 2000 HAZUS data)	#Police Stations Total	0	1	0	1
	*Probability of At Least Moderate Damage >50%	0	0	0	0
	#Schools Total	0	4	1	5
	*Probability of At Least Moderate Damage >50%	0	1	0	1
	# Hospitals Total	0	2	0	2
	*Probability of At Least Moderate Damage >50%	0	1	0	1
	# Fire Stations Total	3	3	2	8
	*Probability of At Least Moderate Damage >50%	1	1	1	3
Inventory of Hazardous Materials Sites (Based on 2000 HAZUS data)		3	10	3	16
Residential Damage	Total # of Houses	2,363	2,994	2,464	7,821
	Moderate Damage Count	714	975	760	2,449
	Severe Damage Count	351	526	521	1,398
	Completely Destroyed County	333	423	518	1,274
	Damage Subtotal	1,398	1,924	1,799	5,121
Debris Total Weight (Tons)	Brick/Wood	17,295	28,896	31,107	77,298
	Concrete / Steel	1,311	1,794	2,575	5,680

County Category	Description	Operational Area 5301 (25.37%)	Operational Area 5302 (42.92%)	Operational Area 5303 (31.71%)	Jasper County Total
	Tree	884,462	694,452	760,034	2,338,948
	Eligible Tree Weight	26,534	27,778	22,801	77,113

*At Least Moderate Damage means the facility needs to be inspected before reuse.

RESOURCE REQUIREMENTS

Jasper County Category	Description	Operational Area 5301 (25.37%)	Operational Area 5302 (42.92%)	Operational Area 5303 (31.71%)	Jasper County Total
Ice	8 lb bag/per person	1,532	2,355	2,682	6,569
8 lb per bag	Total Weight per Operational Area	12,254	18,842	21,454	52,550
	Tons of ice	6	9	11	26
1 pallet/275 bags	Total # pallets per Operational Area	6	9	10	24
20 pallets per truck	Total number of Trucks per day	0	0	0	1
Water	3 one liter bottles/per person/day	4,645	7,142	8,133	19,921
12 bottles per case	Total cases per Operational Area	387	595	678	1,660
30 lb per case	Total Weight per Operational Area	11,613	17,856	20,332	49,802
	Tons of water	6	9	10	25
70 cases per pallet	Total # pallets per Operational Area	6	9	10	24
20 pallets per truck	Total number of Trucks per day	0	0	0	1
Meals	2/person/day	3,097	4,762	5,422	13,280
12 meal per case	Total cases per Operational Area	258	397	452	1,107
20 lbs per case	Total Weight per Operational Area	5,162	7,936	9,037	22,134
	Tons of MREs	3	4	5	11
48 cases per pallet	Total # pallets per Operational Area	5	8	9	23
40 pallets per truck	Total number of Trucks per day	0	0	0	1

Jasper County Category	Description	Operational Area 5301 (25.37%)	Operational Area 5302 (42.92%)	Operational Area 5303 (31.71%)	Jasper County Total
	Total number of Trucks	1	1	1	3
	# of type III PODs required	0	0	1	1
	# of personnel required to operate PODs	10	15	17	42

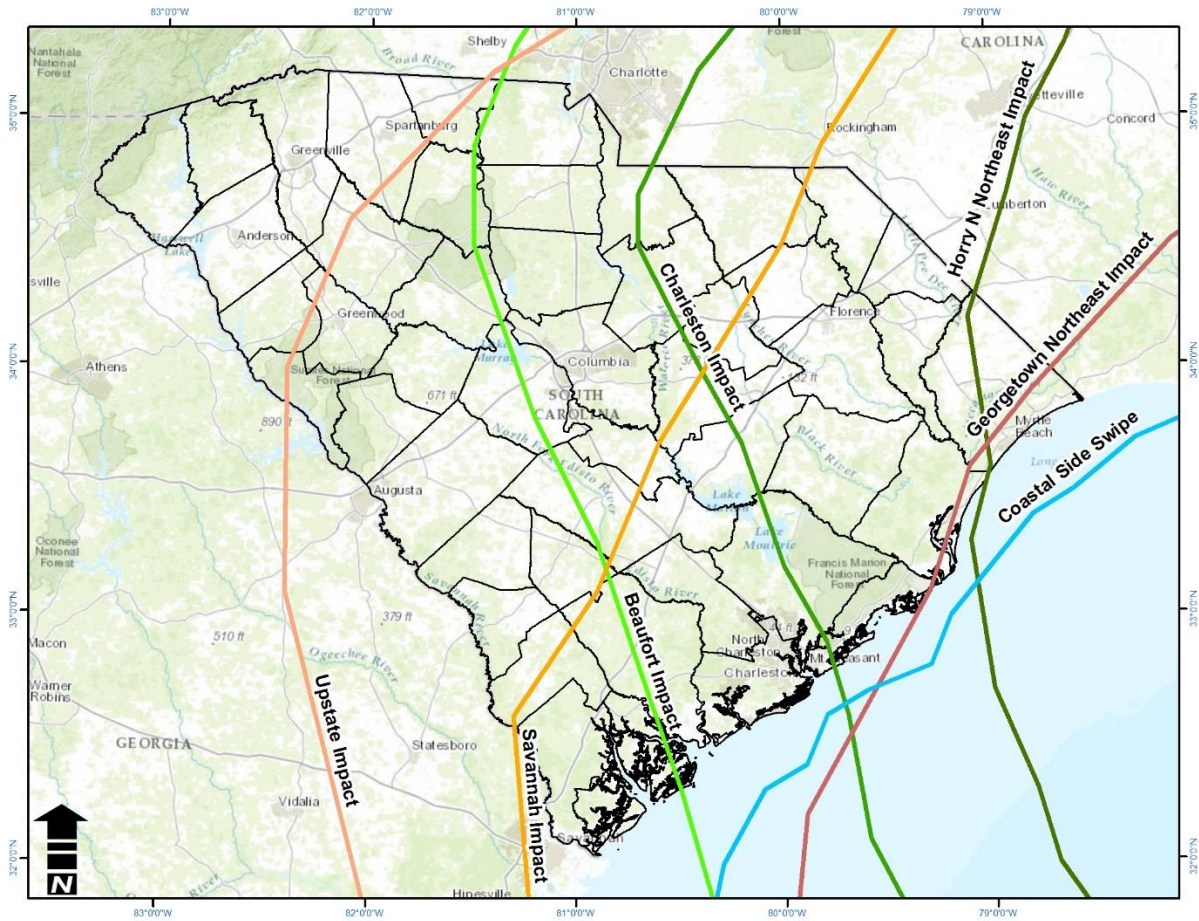
III. HAZUS SUPPLEMENT TO OPERATIONAL AREA MODELING

A. In an effort to provide more up to date vulnerability information, the SCEMD GIS Analyst ran seven different HAZUS computer model estimates of tropical cyclone tracks across the state. Each track, except the Upstate impact track, was run using three different Saffir-Simpson Scale wind categories of hurricanes to estimate impacts. The storm tracks and various wind classification scenarios were discussed among members of the Hurricane Task Force. HAZUS assumes complete evacuation. Displaced/shelter needs are based on re-entries being able to safely occupy residences

1. The Tracks were as follows:
 - a. Coastal Side Swipe
 - (1) Category 2-3
 - (2) Category 4
 - (3) Category 5
 - b. Upstate Impacts
 - (1) Category 2-3
 - c. Georgetown NE Impact
 - (1) Category 2-3
 - (2) Category 4
 - (3) Category 5
 - d. Beaufort Impact
 - (1) Category 2-3
 - (2) Category 4
 - (3) Category 5
 - e. Charleston Impact
 - (1) Category 2-3
 - (2) Category 4
 - (3) Category 5

f. Horry NNE Impact

- (1) Category 2-3
- (2) Category 4
- (3) Category 5



Hurricane In Relation To Coastline	Category	Buildings*	EOCs*	Fire Stations*	Hospitals*	Police Stations*	Schools*	Debris Total Tons	Eligible Tree Debris Tons	Displaced Households**	People Seeking Temp Shelter**	Total Economic Loss
Coastal Side Swipe	2-3	5,039	0	0	5	0	0	505,828	84,758	142	20	\$1,193,800,000.00
Coastal Side Swipe	4	4,994	0	0	5	0	0	555,264	96,366	713	168	\$1,109,400,000.00
Coastal Side Swipe	5	24,441	0	3	8	5	21	1,115,604	159,692	8,285	1,836	\$6,188,200,000.00
Upstate Impact	2-3	43,563	0	0	11	5	86	6,302,345	504,975	9,104	2,433	\$6,223,400,000.00
Savannah Impact	2-3	43,641	2	0	9	3	120	11,099,406	630,984	8,148	2,431	\$5,597,500,000.00
Savannah Impact	4	111,459	7	41	12	18	149	23,558,311	1,230,598	52,814	15,772	\$19,740,800,000.00
Savannah Impact	5	143,232	8	44	16	20	155	42,214,982	2,084,810	98,381	29,560	\$38,152,800,000.00
Georgetown NE Impact	2-3	45,230	0	0	7	0	50	4,115,206	377,635	8,292	2,004	\$7,091,200,000.00
Georgetown NE Impact	4	124,025	2	13	7	9	81	10,060,070	777,020	58,490	14,464	\$28,224,800,000.00
Georgetown NE Impact	5	155,932	2	13	7	9	81	16,968,133	1,179,887	108,098	26,771	\$53,191,500,000.00
Beaufort Impact	2-3	90,728	2	0	25	5	180	14,888,273	1,084,783	17,033	4,517	\$13,208,500,000.00
Beaufort Impact	4	258,310	9	87	32	22	272	36,225,209	2,330,412	145,799	37,386	\$59,337,800,000.00
Beaufort Impact	5	299,013	10	91	32	22	277	56,733,941	3,431,305	210,554	54,344	\$91,121,000,000.00
Charleston Impact	2-3	88,435	3	0	15	8	205	11,048,298	859,233	18,734	4,957	\$13,533,200,000.00
Charleston Impact	4	231,789	6	67	18	22	268	24,414,333	1,687,823	130,642	34,295	\$54,661,100,000.00
Charleston Impact	5	273,771	6	69	18	23	277	36,594,548	2,362,985	202,992	52,996	\$88,052,700,000.00
Horry NNE Impact	2-3	39,527	0	0	5	0	69	3,980,824	326,168	7,355	1,852	\$5,596,200,000.00
Horry NNE Impact	4	105,977	3	12	5	7	82	8,932,515	644,643	50,222	12,703	\$21,874,000,000.00
Horry NNE Impact	5	131,397	3	12	5	8	82	13,013,812	887,071	88,553	22,133	\$37,873,100,000.00