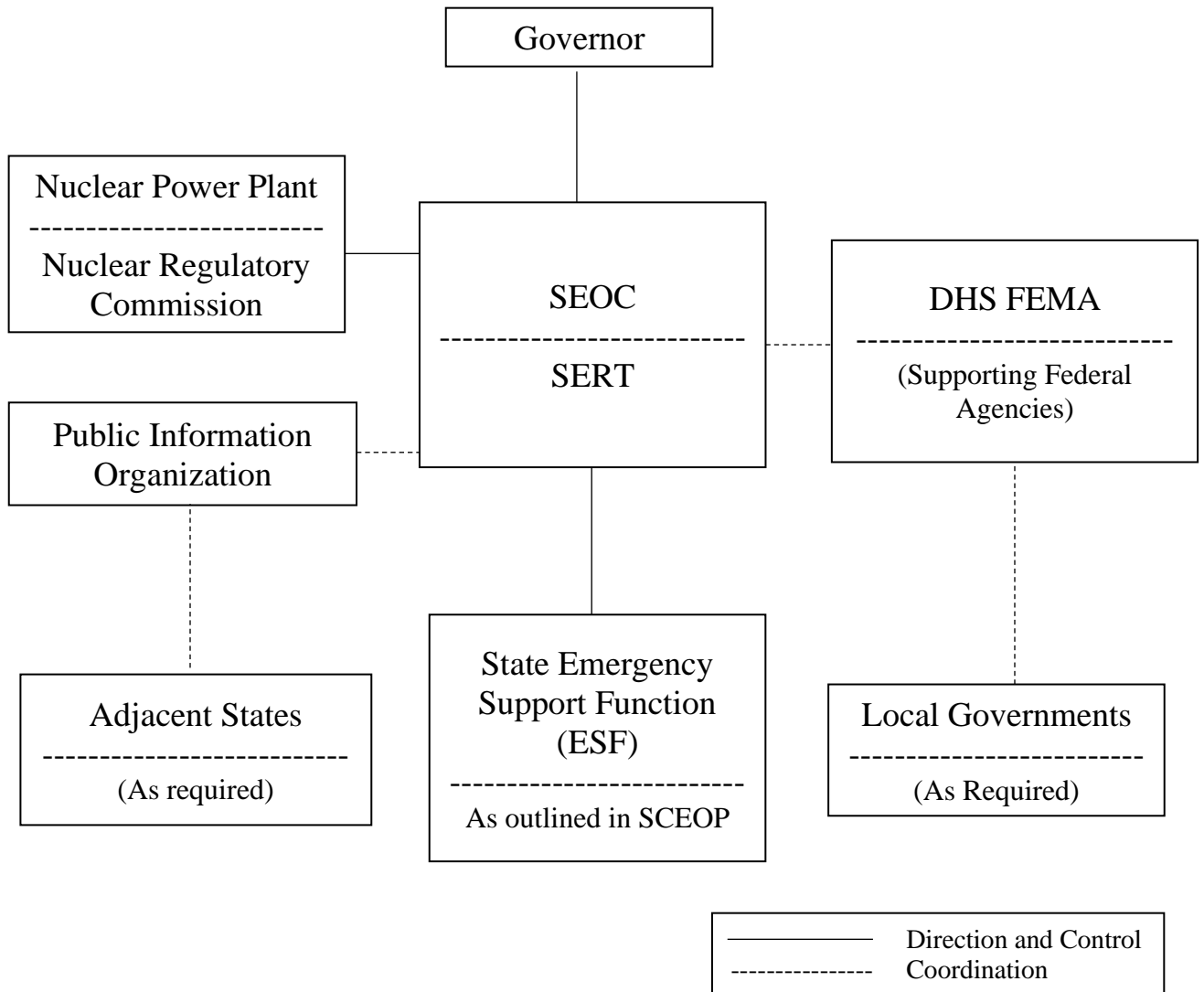


ATTACHMENT A
RER ORGANIZATIONAL CHART



*SC Code of Regulations 58-101; Para A; 2.b., “State government shall assume direction and control of area or county government emergency operations when requested by proper county government authority; or when county government authority has broken down or is nonexistent; or when the nature and magnitude of an emergency is such that effective response and recovery action is beyond the capability of county government, or when, in the event of a war emergency or declared natural or manmade emergency, state direction is required for implementation of a state or national plan in accordance with the Emergency Powers Act (South Carolina Code of Laws, Title 25 – Chapter 1. Article 4; Section 25-1-420 thru 460)