

ANNEX 5
(HEALTH AND MEDICAL SUPPORT)
TO THE SOUTH CAROLINA OPERATIONAL RADIOLOGICAL EMERGENCY
RESPONSE PLAN

I. INTRODUCTION

- A. A major radiological incident at a Nuclear Power Plant (NPP) may create an emergency situation that exceeds local capabilities for transporting and medically treating individuals who have become contaminated or injured as a result of the incident. Plans and procedures for reinforcing local capabilities are therefore necessary.
- B. The provision of health and medical support in the event of a NPP radiological incident involves the treatment of radiation-related injuries as well as associated routine injuries in the field, and at reception centers, shelters or designated medical facilities.
- C. Development of plans for the provision of health and medical support is a joint state and county responsibility. County Emergency Operations Plans and Annex 3 (Health and Medical Support) of each NPP Site Specific Plan identifies transportation resources and medical facilities to be used for the treatment of contaminated/injured individuals.

II. PURPOSE

Outline the policies and procedures for the provision of medical and public health support in the event of an incident at an NPP.

III. CONCEPT OF OPERATIONS

- A. Upon notification of a radiological incident at an NPP, county officials will commit all available local emergency medical transportation vehicles to transport radiologically contaminated/injured individuals from the affected areas to designated medical facilities.
- B. Appropriate letters of agreement have been obtained with local, primary and backup hospitals having the capability for evaluation of radiation exposure and uptake, including assurance that persons providing medical services are adequately prepared to handle radiologically contaminated injured individuals. Counties will seek medical assistance first with the primary hospital, then the backup prior to requesting assistance from other sources.
- C. If additional support is required, ESF-8 (Health and Medical Services) will coordinate through the South Carolina Department of Public Health (SCDPH) to the affected areas to assist in coordinating additional emergency transportation resources throughout the state.

IV. ORGANIZATION AND ASSIGNMENT OF RESPONSIBILITIES

A. Responsibilities

1. SCDPH Incident Management Team (IMT)

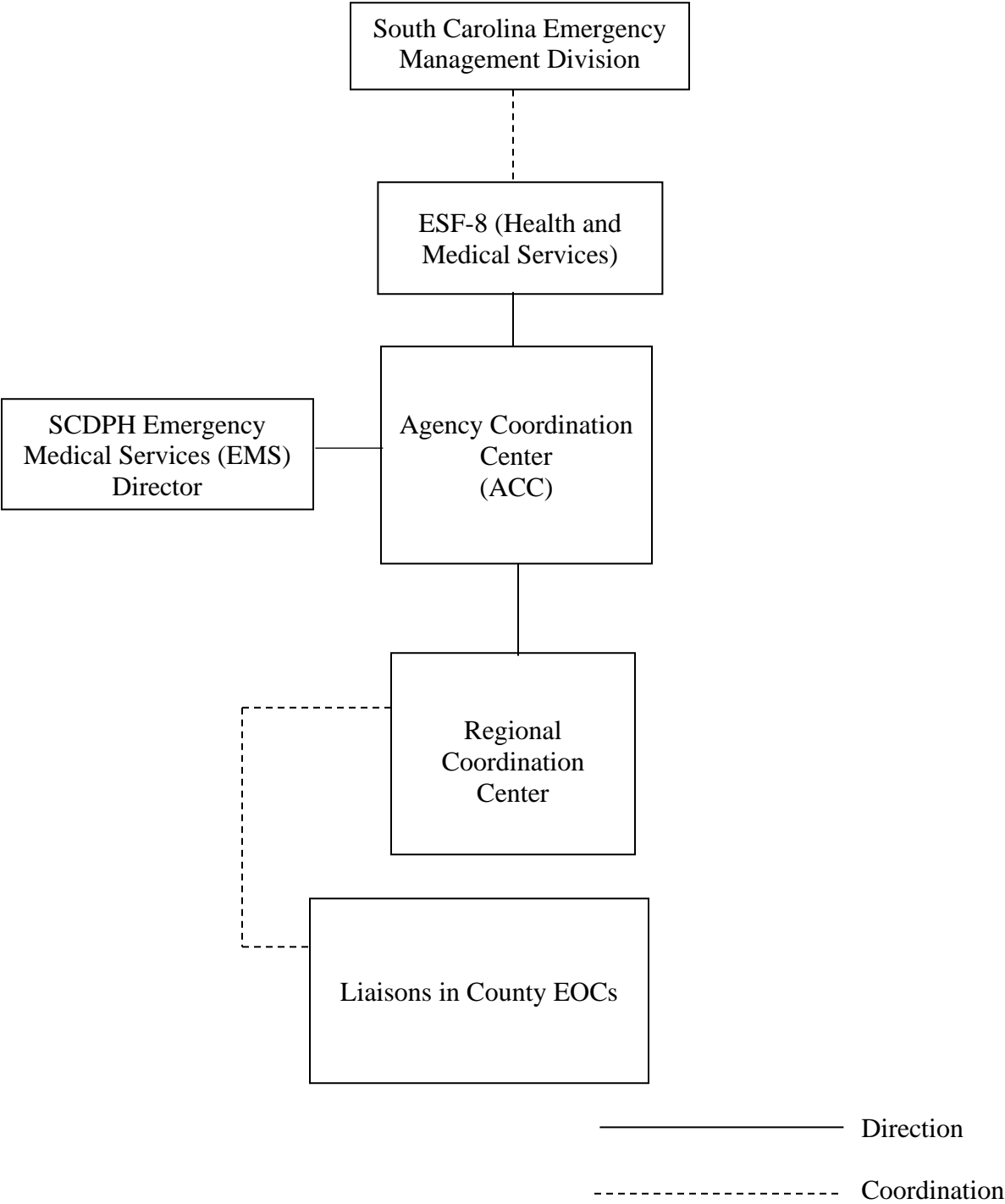
a. Bureau of Emergency Medical Services and Trauma Director

- (1) Maintains listing of all Emergency Medical Services (EMS) resources throughout the state.
- (2) Contacts and requests deployment of these resources as needed.
- (3) Assign Regional EMS inspector(s) to Regional Coordination Center (RCC) as requested.

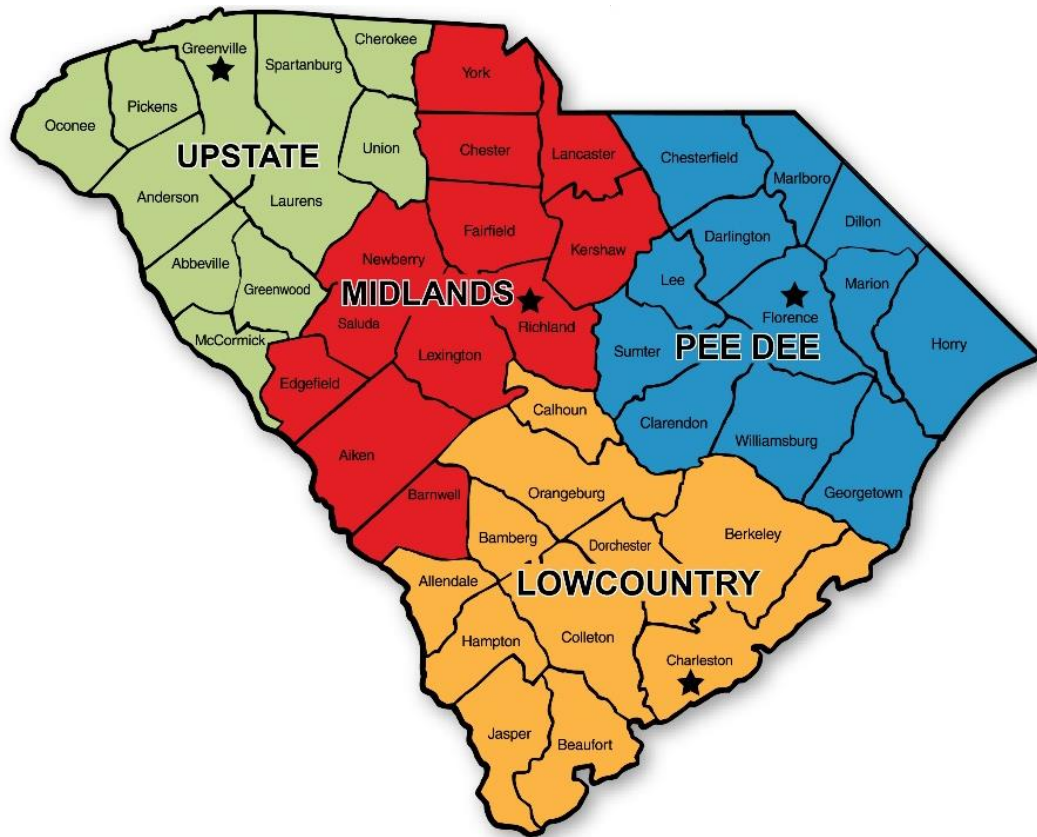
2. ESF-8 (Health and Medical Services)

- a. Coordinates activities at the State Emergency Operations Center (SEOC).
- b. Contacts IMT for information regarding pool of statewide EMS resources.
- c. Coordinates with the SEOC Logistics for Emergency Management Assistance Compact and/or federal resources when state resources are exhausted.
- d. Maintain liaison and coordinate with County Emergency Management Directors within the affected areas as needed.
- e. Request and coordinate additional emergency medical transportation resources within the affected area as needed.

ANNEX 5, ATTACHMENT A – ORGANIZATIONAL CHART



ANNEX 5, ATTACHMENT B – SCDPH PUBLIC HEALTH REGION MAP



ANNEX 5, ATTACHMENT C – MEDICAL FACILITIES FOR RECEIVING VICTIMS OF A RADIATION INCIDENT**I. PURPOSE**

Identify medical facilities in the vicinity of commercial or Department of Energy (DOE) Nuclear Power Plants (NPPs) which have the capability to treat radiologically contaminated/injured individuals.

II. MEDICAL FACILITIES IDENTIFIED FOR THE TREATMENT OF RADIOLOGICALLY CONTAMINATED/INJURED INDIVIDUALS.

- A. To determine medical facilities throughout South Carolina considered capable of providing medical support for radiological contaminated/injured individuals, a statewide survey is conducted periodically. ESF-8 (Health and Medical Services) maintains a copy of the survey and the results.
- B. Each NPP and affected county identified primary and alternate hospitals for the treatment for plant personnel and members of the public respectively. Additionally, SCDPH maintains a list of all medical facilities throughout the state which are considered capable of providing medical support for contaminated, injured individuals.
- C. In the event a radiological accident at an NPP exceeds or exhausts South Carolina's medical treatment capabilities, the States of North Carolina and Georgia have agreed to request and coordinate back-up support from their respective available medical facilities as needed [See Annex 9 (Letters of Agreement and Memoranda of Understanding)].
- D. In the event a radiological accident at an NPP exceeds South Carolina's governmentally owned or leased and commercially available facilities, the Radiation Emergency Assistance Center/Training Site (REAC/TS) at Oak Ridge, Tennessee is authorized to provide back-up services [See Annex 9 (Letters of Agreement and Memoranda of Understanding)].