

# **SITE SPECIFIC PLAN**

## **PART 2, SCORERP**



# **ROBINSON NUCLEAR PLANT**

**December 2024**

## TABLE OF CONTENTS

I.	Introduction.....	2-1
II.	Purpose .....	2-1
III.	Situation and Assumptions .....	2-1
	A. Situation.....	2-1
	B. Assumptions .....	2-2
IV.	Concept of Operations .....	2-2
	A. General.....	2-2
	B. Specific .....	2-2
	1. Alert and Notification .....	2-2
	2. State Emergency Operations Center (SEOC) .....	2-3
	3. Local .....	2-3
	4. Traffic Management .....	2-3
	5. Radiological Monitoring and Decontamination .....	2-4
	6. Evacuation .....	2-4
	7. Radiological Exposure Control.....	2-6
	8. Transportation.....	2-6
	9. Medical .....	2-6
	10. Communications.....	2-6
	11. Training.....	2-7
	12. Drills and Exercises .....	2-7
V.	Organization and Assignment of Responsibilities.....	2-8
VI.	Logistics.....	2-9
VII.	Direction and Control .....	2-9
	A. SEOC .....	2-9
	B. County Emergency Operations Centers.....	2-9
	C. Robinson Nuclear Plant .....	2-9
	Table 1 - RNP 10-Mile EPZ Map Zone Descriptions .....	2-10
	Figure 1 – RNP 10-Mile EPZ Map .....	2-13
	Figure 2 – RNP 50 Mile Ingestion Exposure Pathway Emergency Planning Zone .....	2-14
	Figure 3 – RNP10-Mile EPZ Population Distribution Map .....	2-15
	Figure 4 – Organization Relationships .....	2-16
	Figure 5- Emergency Notification Form.....	2-17
	Annex 1 – Alert and Notification .....	2-1-1

## TABLE OF CONTENTS

---

Attachment A- State Emergency Alert System for Florence Operational Area .....	2-A-1
Annex 2 – Reception Centers and Shelters .....	2-2-1
Attachment A- Primary and Backup Shelters and Capacities .....	2-2-A-1
Annex 3 – Medical and Public Health Support .....	2-3-1
Attachment A- Letter of Agreement with Carolina Pines Regional Medical Center ...	2-3-A-1
Attachment B- Letter of Agreement with McLeod Health Cheraw .....	2-3-B-1
Attachment C- Map to Primary Hospital .....	2-3-C-1
Attachment D- Map to Back-up Hospital .....	2-3-D-1

## **I. INTRODUCTION**

The Robinson Nuclear Plant (RNP) Site Specific Plan, Part 2, South Carolina Operational Radiological Emergency Response Plan (SCORERP) provides for the guidance, coordination, and utilization of state and other resources in support of local governments in the event of a nuclear incident at RNP. The RNP Site Specific Plan forms an integral part of the SCORERP and addresses matters pertaining directly to RNP not already addressed in the SCORERP Basic Plan.

## **II. PURPOSE**

To protect the populace and property in areas that may be affected by a radiological incident at RNP and to provide for off-site recovery.

## **III. SITUATION AND ASSUMPTIONS**

### **A. Situation**

1. RNP is located due west of Lake Robinson Dam in Darlington County. The geographic coordinates are 34° 24' 2" North, -80° 9' 5" West. RNP is owned and operated by Duke Energy whose corporate headquarters is in Charlotte, North Carolina.
2. In operation since March 1971, RNP has one pressurized water reactor that was manufactured by the Westinghouse Corporation. RNP has a production capability of 724 megawatts of power.
3. Portions of Darlington, Lee and Chesterfield Counties are within the 10-mile Emergency Planning Zone (EPZ) (See Figure 1). All of the affected counties have formulated detailed radiological emergency response annexes as part of their County Emergency Operations Plans (EOPs), and these annexes fully support the operational framework of the SCORERP.
4. Darlington, Chesterfield, Lee, Kershaw, Marlboro, Dillon, Marion, Florence, Williamsburg, Clarendon, Sumter, Richland, Fairfield, Lancaster, and Chester counties in South Carolina, along with Anson, Robeson, Richmond, Union, and Scotland counties in North Carolina, lie within the 50-mile Ingestion Exposure Pathway Emergency Planning Zone (IPZ) (See Figure 2).
5. RNP prevailing winds are from the southwest.

### **B. Assumptions**

1. A radiological incident could occur at RNP that may cause an off-site hazard to residents and property. Planning for a radiological incident will facilitate an effective response.
2. Retention of existing licenses for operating Nuclear Power Plants (NPP) is dependent on effective emergency operations of state/local jurisdictions and of the licensee, in accordance with NUREG-0654, FEMA-REP-1 REV.2.

3. A radiological incident at RNP that presents off-site radiological hazards will involve the governments of the three counties within the 10-mile EPZ. Therefore, state government will be required to provide direction, coordination and support in accordance with the State Code of Regulations 58-1 and 58-101.

#### **IV. CONCEPT OF OPERATIONS**

##### **A. General**

The South Carolina Emergency Management Division (SCEMD) under the direction of the Governor and Chesterfield, Darlington, Florence, and Lee counties will conduct the off-site response to a radiological incident at the RNP. The Governor, through the Director, South Carolina Emergency Management Division (SCEMD), and the State Emergency Operations Center (SEOC) will exercise direction and control of state emergency operations. SCEMD will coordinate all state agencies, departments and local emergency response organizations mobilized pursuant to this plan. To assure adequate response and efficient use of state personnel and other resources, State Emergency Support Functions (ESFs) which correlate to the ESFs of the National Response Framework (NRF) have been designated. ESF responsibilities and procedures are contained in the South Carolina Emergency Operations Plan (SCEOP) and its' supporting Standard Operating Procedures (SOPs). Federal response to a radiological incident at RNP in support of the State will be accomplished under the provisions of the Nuclear/Radiological Incident Annex (NRIA) of the NRF.

##### **B. Specific**

###### **1. Alert and Notification**

- a. See Annex 1.
- b. Alert and Notification procedures are designed not only to inform and instruct the populace in emergency planning zones, but also to notify federal, state, and local Radiological Emergency Response (RER) forces.
  - (1) In the event of an incident at RNP, the primary means for notifying off-site response forces is Duke Emergency Management Network (DEMNet), which is a teleconferencing system that operates using both VoIP (primary) and satellite phone technology. Only one technology is required to consider the system functional. The backup system is a commercial telephone.
  - (2) A fixed siren system is the primary means of alerting the public within the 10-mile EPZ. Emergency protective action instructions will be broadcast immediately following the Emergency Alert System (EAS).

###### **2. State Emergency Operations Center (SEOC)**

- a. The SEOC, 2779 Fish Hatchery Road, West Columbia, SC 29172 may be activated upon notification of an ALERT Emergency Classification Level (ECL). Direction and control of emergency response forces will emanate

from the SEOC.

- b. The South Carolina Department of Public Health (SCDPH) and South Carolina Department of Environmental Services (SCDES) , under the auspices of ESF 8 and 10, will be co-located in the SEOC. A SCDES technical representative will be dispatched to the RNP Emergency Operations Facility (EOF) located at 9700 David Taylor Dr Charlotte, NC 28262 and to the affected county or counties.
- c. RNP will provide technical representatives to the SEOC and the County EOCs.
- d. SCEMD will provide REP (Radiological Emergency Planners) and/or REMs (Regional Emergency Manager) to both host and risk county EOCs and the RNP EOF.

3. Local

County/Municipal governments are responsible for local radiological emergency response within their jurisdictions, except for technical radiological assessment. County/Municipal governments will coordinate with the Governor of SC or his/her designee (normally the director of SCEMD) along with state agencies, departments, and local emergency response organizations pursuant to this plan. Once the SEOC personnel have validated the request and verified the resources, additional assets may be furnished to aid local agencies.

4. Traffic Management

- a. Upon declaration of a Site Area Emergency (SAE), ESF 16, (Emergency Traffic Management) led by the South Carolina Highway Patrol (SCHP), will coordinate the occupation of designated Traffic and Access Control Points (TACPs) with County Sheriff or Chief law enforcement officer within the 10-mile EPZ.

The purpose of TACPs is to provide assistance during an evacuation and prevent access to restricted areas. TCP locations are depicted in Figure 1.

- b. The SC Department of Natural Resources (SCDNR) ESF-13 will patrol Lake Robinson to prevent water transportation access to the facility and to initiate lake clearing and evacuation procedures.
- c. RNP security personnel will provide entrance control to the EOF and Emergency News Center (ENC) in their Charlotte, NC headquarters building.
- d. Only pre-designated forms of identification will be honored at security check points.
- e. Local authorities are responsible for security and traffic control within

their jurisdictions during all phases of a radiological incident. ESF 16, located in the SEOC, will coordinate requests from local authorities when reinforcements are required.

5. Radiological Monitoring and Decontamination

- a. See SCORERP Basic Plan, Annex 6 (Radiological Exposure Control)
- b. County teams with specialized training will conduct radiological monitoring and decontamination of evacuees, emergency workers, emergency vehicles, and equipment with technical assistance provided by SCDES, as required.
- c. Chesterfield, Darlington, Florence, and Lee Counties have designated radiological monitoring and decontamination points. The location of each monitoring and decontamination point is contained in county EOPs.
- d. SCEMD maintains its own radiological laboratory. SCEMD is responsible for the calibration and maintenance of radiological equipment for Chesterfield, Darlington, Florence, and Lee Counties emergency workers.
- e. The South Carolina Radiological Equipment and Personnel Redistribution Standard Operating Procedures can be activated to provide personnel and equipment support in the event of an incident at RNP.

6. Evacuation

- a. When a State of Emergency has been declared, the Governor may issue orders to evacuate all or portions of the 10-mile EPZ surrounding RNP (See Figure 1). Orders for evacuation of the 2-mile EPZ may precede orders for evacuation of other zones within the 10-mile EPZ.
- b. Evacuation will be ordered at the General Emergency ECL unless it is deemed unsafe or unfavorable due to a hostile action-based incident or other impediment(s). Evacuation could be ordered at the Site Area Emergency or ALERT ECLs if the potential for further degradation of plant conditions appears imminent.
- c. During a fast-breaking event, RNP officials may recommend evacuation to county authorities who may then direct and coordinate the evacuation of impacted zones.
- d. The Sheriff (as Chief Law Enforcement Officer of the affected county) will, in coordination with the SCHP and other law enforcement agencies, coordinate evacuation activities in accordance with the affected county EOP.
- e. Residential population
  - (1) Population Densities.

<u>Zone</u>	<u>Population</u>
A-0	2,126
A-1	812
A-2	1,344
B-1	15,108
B-2	5,040
C-1	2,646
C-2	1,674
D-1	993
D-2	914
E-1	468
E-2	1,973
<b>Entire EPZ</b>	<b>33,008</b>

Note: Please see the Evacuation Time Estimate (ETE) study for complete evacuation information.

- (2) Evacuation Confirmation Time 4:25 Hours.
- (3) Population Distribution Map (See Figure 3).
- f. Chesterfield, Darlington, and Lee Counties have designated evacuation routes for persons living, working, and transiting the 10-mile EPZ. These routes lead to reception centers/shelter areas (See Figure 1).
- g. The affected county/counties will provide transportation to those evacuees who are without transportation and to individuals with functional needs requiring special transportation. The number of individuals needing transportation will be determined through the special assistance card in the Duke Emergency Preparedness Brochure. State assistance may be requested. Special transportation needs are addressed in the Chesterfield, Darlington, and Lee County EOPs.
- h. All evacuees will be processed through shelters or reception centers as outlined in Annex 2. Each evacuee, including those who elect not to accept temporary shelters, will be monitored, registered, and processed. For control and re-entry purposes, each county will maintain records for contacting evacuees. Temporary housing should be located at least five miles from the EPZ outer boundary (15 miles from the nuclear facility site).
- i. See SCORERP Basic Plan for reentry, return, and relocation information.
- 7. Radiological Exposure Control  
See SCORERP Basic Plan, Annex 6 (Radiological Exposure Control)
- 8. Transportation
  - a. The RNP 10-mile EPZ is covered by a road system that provides multiple



primary and alternate routes for evacuation and access to the area. There are no obstacles that would impede rapid evacuation or response.

- b. Counties and municipal governments have plans for acquiring emergency transportation in the event of a radiological incident. The means for evacuating schools, hospitals, nursing homes, individuals with functional needs and residents without private transportation are identified in county plans.
- c. State transportation resources may be requested to augment county transportation requirements.

9. Medical

- a. See Annex 3 (Medical and Public Health Support)
- b. See SCORERP Basic Plan, Annex 5 (Medical and Public Health Support)

10. Communications

- a. In the event of an emergency at RNP, the site is capable of notifying state and local emergency response networks on a 24-hour basis. The Site Emergency Coordinator and/or the Emergency Response Manager is responsible for notifying the State Warning Point (SWP)/SEOC and the Chesterfield, Darlington, and Lee County Warning Points or EOCs.
  - (1) A DEMNet connects the RNP Control Room, Technical Support Center (TSC) and EOF with the SWP/SEOC and Chesterfield, Darlington, and Lee County EOCs and County Warning Points.
  - (2) Standard commercial and satellite telephone lines are available at RNP for communications with all state and local organizations. The satellite phone is the primary backup communications tool for RNP.
  - (3) A conference bridge line will be established by SCEMD as the primary means for offsite response organizations' (OROs) protective action discussion making.
  - (4) A DEMNet conference decision line is located in the Duke Energy EOF, SEOC, Chesterfield, Darlington, and Lee County EOCs. This DL is the secondary communication line for decision making on protective actions and/or coordination for siren activation.
- b. County Communications Officers are responsible for communications within their jurisdictions during a radiological emergency. Their responsibilities include the activation of communications systems, the maintenance and operation of the primary and alternate systems on a 24-hour basis and reporting the system's status during an emergency. The responsible parties are:

- (1) Darlington County: Communications Officer, responsible to the Director, Darlington County Emergency Preparedness Agency.
  - (2) Lee County: Communications Officer, responsible to the Director, Lee County Disaster Preparedness Agency.
  - (3) Chesterfield County: Communications Officer, responsible to the Director, Chesterfield County Office of Emergency Services.
- c. Communications with local governments within the 10-mile EPZ will be tested weekly. Communications with federal emergency response organizations shall be tested quarterly. RNP tests DEMNet on a monthly basis and the Decision lines on a quarterly basis. Communications between the nuclear plant, state, and local emergency operations centers, and field assessment teams shall be tested annually. Communication drills shall also include the aspect of understanding the content of messages.

#### 11. Training

County directors and directors of state agencies are responsible for assuring Radiological Emergency Response (RER) training is conducted in accordance with the SCORERP Basic Plan, Annex 2 (Training)

#### 12. Drills and Exercises

- a. See SCORERP Basic Plan, Annex 4 (Exercises and Drills).
- b. Exercises are designed to test all elements of emergency preparedness plans pertaining to RNP and the capability of support elements in the 10-mile EPZ cited in such plans. A biennial exercise will be conducted and will involve mobilizing state and local government personnel and resources adequate to verify the capability to respond to an incident scenario (simulated emergency) at RNP. Federal observers will evaluate and critique the biennial exercise.
- c. Drills are supervised periods of instruction designed to test, develop, and maintain skills of individuals who form a part of radiological emergency response organizations. County directors shall ensure that drills are conducted by qualified instructors in the frequency listed below.
  - (1) Communications Drills: See SCORERP Basic Plan, Annex 4 (Exercises and Drills).
  - (2) Fire Drills: Annually, fire drills at the RNP will involve the participation of one of the following community fire departments:
    - (a) Hartsville Fire Department
    - (b) Pine Ridge Fire Department

(3) Medical Services Drills (MSD):

- (a) Annually, a simulated radiologically contaminated injured individual from the RNP will be treated and transported by the contracted EMS provider in Chesterfield County or Darlington County EMS commonly known as an MS-1 Drill.
- (b) Annually, a simulated radiologically contaminated injured individual from the RNP 10-mile EPZ general population will be treated and evacuated to Carolina Pines Regional Medical Center or McLeod Health Cheraw known commonly as an MSD.

**V. ORGANIZATION AND ASSIGNMENT OF RESPONSIBILITIES**

- A. State (See SCORERP Basic Plan, paragraph VIII)
- B. Local (See Chesterfield, Darlington, Florence, and Lee County EOPs)
- C. Organization relationships (See Figure 4)

**VI. ADMINISTRATION AND LOGISTICS**

- A. See the South Carolina Emergency Operations Plan (SCEOP), Annex X (Administration, Logistics, and Finance).
- B. Counties provide their own administrative and logistic support. Requests for augmentation may be submitted in accordance with the SCEOP.

**VII. DIRECTION AND CONTROL**

A. SEOC

The SEOC is located at 2779 Fish Hatchery Road, West Columbia, SC 29172.

B. County Emergency Operations Centers

- 1. Chesterfield County EOC is located at 109 Scotch Road, Chesterfield, SC 29709.
- 2. Darlington County EOC is located at 1625 Harry Byrd Hwy, Darlington, SC 29532.
- 3. Lee County EOC is located at 119 Deschamps Street, Bishopville, SC 29010.
- 3. Florence County EOC is located on 1221 Justice Way, Effingham, SC 29541

C. Robinson Nuclear Plant

The Duke Energy EOF is located at 9700 David Taylor Drive, Charlotte, NC 28262.



**Table 1 – ROBINSON NUCLEAR PLANT 10-MILE EPZ MAP ZONE DESCRIPTIONS**

<b>Zones</b>	<b>Landmark Descriptions</b>	<b>Boundary Descriptions</b>
<b>A-0</b>	In Darlington County: Includes the areas of: Pine Ridge Community, Clyde Community; Hidden Heights Community; Easterling's Landing, Johnson Landing, and Segar's Mill; Wildwood Subdivision and Shadow Moss Subdivision.	North by the Darlington-Chesterfield County line; East by Lakeview Boulevard, West Old Camden Rd Whipporwill Rd.; New Market Rd.; West Bobo Newsome Hwy (SC 151); South by Westover Dr.; West by Clyde Rd.; West along Rancho Rd. to Chesterfield County line.
<b>A-1</b>	In Chesterfield County: Prospect Church, Spring Branch Church; East bank of Lake Robinson to Darlington County line.	North by SR-346 (Morrison Bridge Road); East by SR-29 (Ruby-Hartsville Road); South by Chesterfield-Darlington County line West by Lake Robinson to include the lake.
<b>A-2</b>	In Chesterfield County: McKinnon, Middendorf; Zion Hill Church; Little Beaver Dam Branch; Cedar Creek; Ousleydale Church.	North by both sides Wire Road (unnumbered county road); East by both sides SR-29 (Ruby-Hartsville Road); both sides SR-404, both sides SC-102; South by Chesterfield-Darlington County line; West by SR-29 (Ruby-Hartsville Road), SR-346 (Morrison Bridge Road), SR-46 and SR-63.
<b>B-1</b>	In Darlington County: Includes the areas of: Pond Hollow Community; Club Colony Subdivision; Northwood Subdivision, Lakeview Community; Golf Course Road; SONOCO; Products Company; Hunter's Pointe Subdivision; Action Ford Dealership, Kalmia Subdivision; Flynn's Crossroads; Progressive Village; Carriage House, Timberchase Subdivision; Morningside Assisted Living; Scott Center; Saleeby Center; Carolina Pines Regional Medical Center; Entire area inside Hartsville City limits, Hartsville Airport Rd.	North by Darlington-County line; Chesterfield East by Ousleydale Road, Patrick Highway; East Home Avenue; US-15 Bypass (Marquis Hwy); to South Fourth Street; West Bobo Newsome Hwy to New Market Road; Lakeview Boulevard to Chesterfield County line.
<b>B-2</b>	In Darlington County: Includes the areas of: Patrick Hwy and East Old Camden Crossroad, Byrdtown Community, McIntosh's, Millpond, Chapman's pond; Centerville Community, Auburn Community; Rosa Lee's Crossroads, Lewis's Crossroads; Swift Creek Fire Department, Darlington International Dragstrip; Lakewood Subdivision, Morton Community; and Ousleydale Road.	North by Darlington-Chesterfield County line; East by Bethlehem Road, US-15N (Hartsville Hwy); to North Center Road; to East Bobo Newsome Highway; to Flinn's Crossroads, to South Fourth Street; to US-15 Bypass (Marquis Highway); to East Home Ave, to Patrick Hwy; Ousleydale Road; to the Chesterfield County line.

<b>C-1</b>	In Darlington County: Includes areas of: Kellytown Community; Highpoint Community; CVS Shopping Plaza, Pam's Restaurant, Harley Circle; Forest Hills Subdivision; Botany Woods Subdivision; Cassidy's Trailer Park; Rolling Hills.	North and east by Clyde Road; Westover Drive; east by W. Bobo Newsome Hwy; South Fifth Street; Highpoint Road; West by Darlington-Lee County line, Stuckey Bottom Road, Hillcrest Road to Clyde Road.
<b>C-2</b>	In Darlington County: Includes areas of: Roller Bearing of SC; Lee's Crossroad, Thomas Hart Academy; Indian Branch Road, Register's Crossroads, Lydia Community; Marco Millpond, Oates Community, Tremont Subdivision; West Seven Pines Road.	North by Highpoint Road; to South Fifth Street; east by East Bobo Newsome Highway; to Faith Road; to west on East Lydia Hwy; to Bethel Road; to Indian Branch Road, to Oates Highway (Hwy 403); to West Seven Pines Road; to Una Road to the Darlington-Lee County line.
<b>D-1</b>	In Darlington County: Includes areas of: Beaverdam Community; Hannah Pond Community; Ashland Community; Clyde School Road.	North by Darlington-Chesterfield County line; East by Rancho Road, to west Old Camden Road; to Clyde Road; to Hillcrest Road; to Stuckey Bottom, Road; to south by the Darlington-Lee County line, to the west by Darlington-Lee-Kershaw County lines (Lynches River).
<b>D-2</b>	In Lee County: Ashland, Stokes Bridge and Turkey Creek communities.	North and East by Lee-Darlington County line; South by BS US-15; West by Lynches River, BS SR-26, BS SC-341, BS SR-339, BS SR-188, SR-50 to Lee-Kershaw County line.
<b>E-1</b>	In Chesterfield County: Leland, Tabernacle Church, King's Mill Pond; New Hope Church; Union Church; east bank of Lake Robinson to Darlington County Line.	North by BS SR-172 (Kings Mill Pond Road); SR-711 (Shady Grove Church Road); SC-151; SR-346 (Morrison Bridge Road); east by Lake Robinson; south by Chesterfield-Darlington County line; west by SR-31 (Union Church Road).
<b>E-2</b>	In Chesterfield County; Middendorf Church, Little Alligator Creek, Lower Alligator Creek, National Wildlife Refuge Headquarters, Ingrams, McBee Lookout Tower, McBee Sandhill State Forrest, Providence Church, Missionary Creek, area South of Rt. 294	North by BS Wire Road (Unnumbered county road); east by SR-63, SR-46 (Middendorf Road); south by SR-346 (Morrison Bridge Road), SC-151, SR-711 (Shady Grove Church; Road), SR-172 (Kings Mill Pond Road); SR-31 (Union Church Road) and Chesterfield-Darlington County line.

Traffic Control Points			
<b><u>Chesterfield County</u></b>		<b><u>Lee County</u></b>	
CH-1	US-1 and SC-151	LE-1	US-15 and SC-34
CH-2	US-1 and SC-145	LE-2	US-15 and SC-341
CH-3	SC-145 and S-13-29		
CH-4	SC-102 and US-1		
CH-5	SC-145 and SC-9 (City of Chesterfield)		
<b><u>Darlington County</u></b>			
S-1/16-A	SC-151 and S16-23		
DA-1/16-B	S-16-23 and S-16-39		
DA-2/16-C	SC-Business 15 and SC-151		
DA-3/16-D	SC-151 and US-15		
S-2/16-E	US-15 and US-52/401		
S-3/16-F	US-52/402 and Dovesville Hwy		
L-1/16-G	SC-151 and SC-34 and US 52 Bypass		

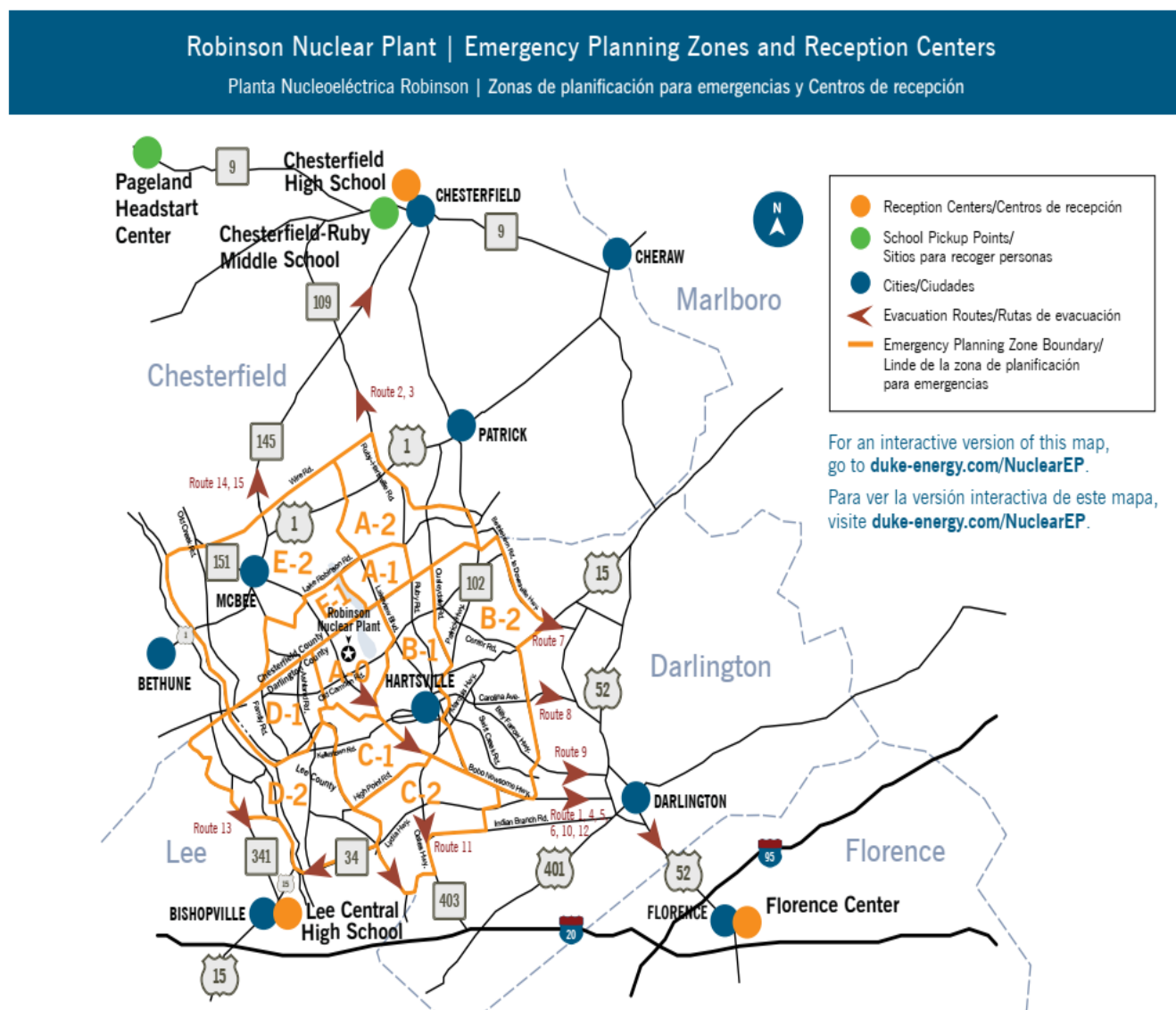
### RNP EVACUATION ROUTES

- A-0 Darlington County**--All to SC-151 (Bobo Newsome Hwy), To Darlington, then Governor Williams Hwy to US-52 South to I-95 South to exit 160 to Florence City-County Civic Center.
- A-1 Chesterfield County**--All to S13-763 (Prospect Church Rd) to S13-29. (Ruby-Hartsville Rd ) to SC-145 to Chesterfield.
- A-2 Chesterfield County**--All to S-13-149 (Cedar Creek Church Rd.) to SC-102 to SC-145 to Chesterfield; OR S13-491 (Bullard Ford Rd. ) to S13-29 (Ruby-Hartsville Rd.) to SC-145 to Chesterfield
- B-1 Darlington County**--SC-151 to Governor Williams Highway to US-52 South to I-95 South to Exit 160 to Florence City-County Civic Center.
- B-2 Darlington County**--All to N. Fifth St and Marquis Hwy to SC-151 to Darlington to Governor Williams Hwy to US 52 South to I-95 South to Exit 160 to Florence City-County Civic Center; OR US-15 to Dovesville Hwy to Governor Williams Hwy to US-52 South to I-95 South to Exit 160 to Florence City-County Civic Center; OR Floyds Road to Governor Williams Hwy to US-52 South to I-95 South to Exit 160 to Florence City-County Civic Center; OR W. Billy Farrow Hwy to Governor Williams Hwy to US-52 South to I-95 South to Exit 160 to Florence City-County Civic Center
- C-1 Darlington County**--All to SC-151 to Darlington to Governor Williams Hwy to US-52 south to I-95 South to Exit 160B to Florence City-County Civic Center
- C-2 Darlington County**--Highway 403 to Windham's Crossroads (401) to I-20 East to Florence City-County Civic Center
- D-1 Darlington County**--All to SC-151 to Darlington to Governor Williams Hwy to US-52 South to I-95 South to Exit 160 to Florence City-County Civic Center.
- D-2 Lee County**--SC-341 to US-15 to SC-34 to Lee Central High School; OR SC-34 through Bishopville to Lee Central High School
- E-1 Chesterfield County**--S13-150 (New Hope Church Road) to S13-711 (Sowell Rd.) to SC-151 to US-1 to SC-145 to Chesterfield; OR S13-46 (Middendorf Rd.) to S-13-346 (Lake Robinson Rd.) to US-1 to SC-145 to Chesterfield; OR SC-151 to US-1 to SC-145 to Chesterfield
- E-2 Chesterfield County**--S13-296 (Old Creek Rd.) to US-1 to SC-145 to Chesterfield; OR US-1 to SC-145 to Chesterfield

**See Figure 1 for shelters, evacuation routes and other points on the map.**

Note: Hospitals, school pickup points and boat ramp locations can be found on Palmetto.

FIGURE 1 – ROBINSON NUCLEAR PLANT 10-MILE EPZ MAP





**FIGURE 2 - RNP 50-MILE INGESTION EXPOSURE PATHWAY EMERGENCY PLANNING ZONE**

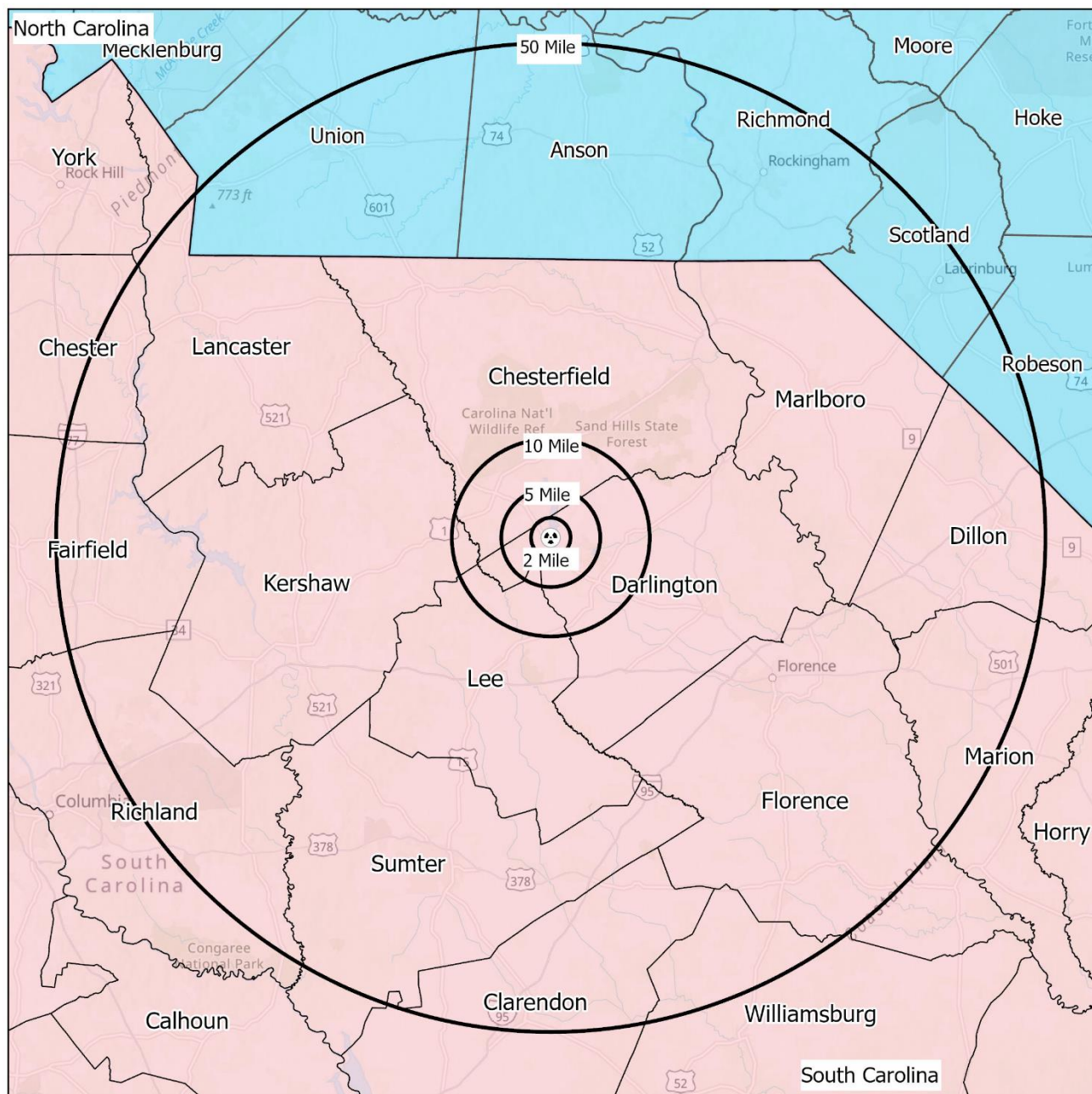
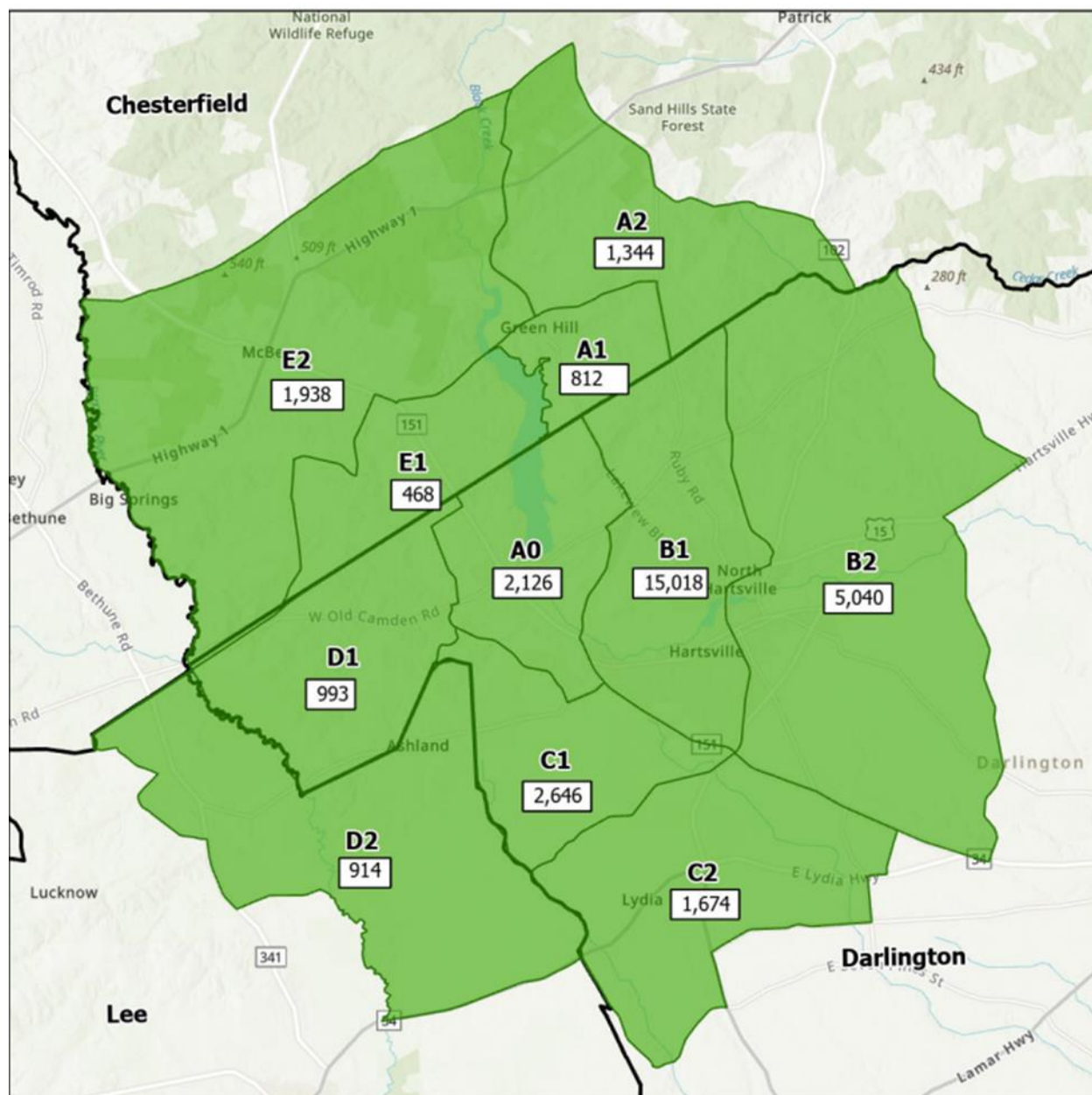
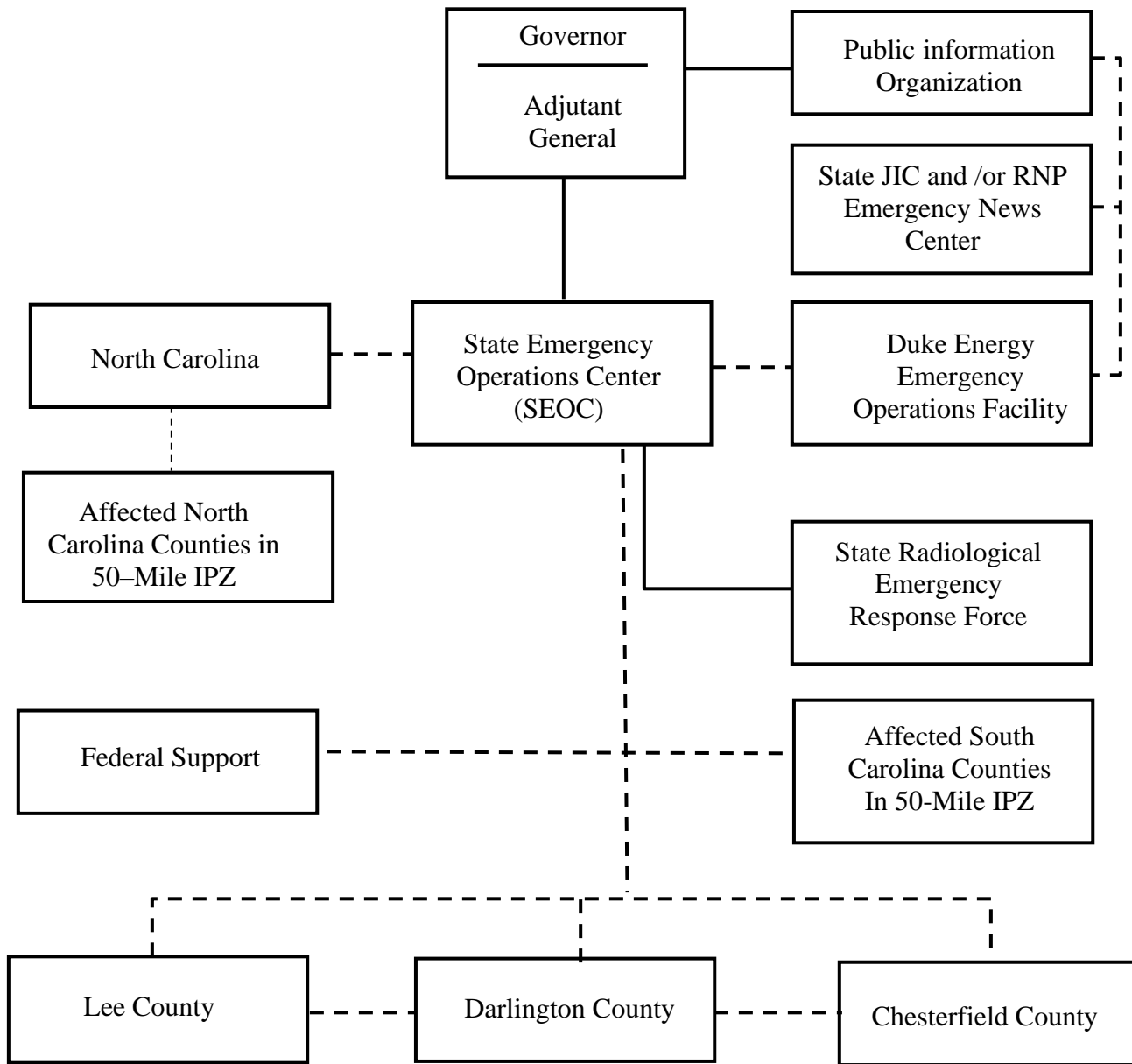


FIGURE 3 - RNP 10-MILE EPZ POPULATION DISTRIBUTION MAP



Note: Based on 2024 ETE update

FIGURE 4 – ORGANIZATION RELATIONSHIPS



Affected counties in 50-mile EPZ:

**SOUTH CAROLINA**

Chester	Lancaster
Clarendon	Marion
Dillon	Marlboro
Fairfield	Richland
Florence	Sumter
Kershaw	Williamsburg

———— Direction

- - - - - Control

FIGURE 5 – EMERGENCY NOTIFICATION FORM

**NUCLEAR POWER PLANT EMERGENCY NOTIFICATION FORM**

MESSAGE # \_\_\_\_\_ Confirmation Phone #: \_\_\_\_\_ AUTHENTICATION CODE #: \_\_\_\_\_

*Lines 1 – 6 are required for INITIAL Notifications*

1. EVENT: <input type="checkbox"/> DRILL <input type="checkbox"/> ACTUAL DECLARATION <input type="checkbox"/> TERMINATION (ONLY Lines 1, 2, & 4 required)			
2. AFFECTED SITE:			
<input type="checkbox"/> BRUNSWICK	<input type="checkbox"/> CATAWBA	<input type="checkbox"/> HARRIS	<input type="checkbox"/> MCGUIRE <input type="checkbox"/> OCONEE <input type="checkbox"/> ROBINSON
3. EMERGENCY CLASSIFICATION			
<input type="checkbox"/> UNUSUAL EVENT	<input type="checkbox"/> ALERT	<input type="checkbox"/> SITE AREA EMERGENCY	<input type="checkbox"/> GENERAL EMERGENCY
4. EAL # _____	Declaration Date: ____/____/____ Time: _____		
	Termination Date: ____/____/____ Time: _____ (mark "N/A" for EAL # & Description)		
EAL DESCRIPTION: _____			
5. RELEASE TO THE ENVIRONMENT (caused by the emergency): <input type="checkbox"/> NONE <input type="checkbox"/> IS OCCURRING <input type="checkbox"/> HAS OCCURRED			
6. PROTECTIVE ACTION RECOMMENDATIONS:			
<input type="checkbox"/> NONE			
<input type="checkbox"/> EVACUATE: _____			
<input type="checkbox"/> SHELTER: _____			
<input type="checkbox"/> CONSIDER THE USE OF KI (POTASSIUM IODIDE) IN ACCORDANCE WITH ORO PLANS AND POLICIES			
<input type="checkbox"/> OTHER: _____			

*Lines 7-11 are NOT required for INITIAL notifications. Lines 7-11 may be provided separately for follow-up notifications.*

7. PROGNOSIS: Upgrade in classification or PAR change is likely before the next follow-up notification ☐ Yes ☐ No

8. SITE UNIT(S) STATUS:

**AFFECTED UNIT**

☐ YES    Unit 1 - \_\_\_\_\_ % Power    Shutdown: Date \_\_\_\_/\_\_\_\_/\_\_\_\_ Time \_\_\_\_\_

☐ YES    Unit 2 - \_\_\_\_\_ % Power    Shutdown: Date \_\_\_\_/\_\_\_\_/\_\_\_\_ Time \_\_\_\_\_

☐ YES    Unit 3 - \_\_\_\_\_ % Power    Shutdown: Date \_\_\_\_/\_\_\_\_/\_\_\_\_ Time \_\_\_\_\_

9. METEOROLOGICAL DATA:

Wind direction from: \_\_\_\_\_ degrees    Wind Speed: \_\_\_\_\_ mph    Precipitation: \_\_\_\_\_ inches

Stability Class:    ☐ A    ☐ B    ☐ C    ☐ D    ☐ E    ☐ F    ☐ G

*Lines 10 - 11 are completed for follow-up notifications, IF Line 5 IS OCCURRING or HAS OCCURRED is selected*

10. AIRBORNE RELEASE CHARACTERIZATION: ☐ GROUND    ☐ MIXED    ☐ ELEVATED

MAGNITUDE UNITS: ☐ Ci    ☐ Ci/sec    ☐ µCi/sec

Noble Gases: \_\_\_\_\_ Iodines: \_\_\_\_\_ Particulates: \_\_\_\_\_

11. DOSE PROJECTION: Projection period: \_\_\_\_\_ Hours    Estimated Release Duration \_\_\_\_\_ Hours

Performed: Date ____/____/____ Time: _____	DISTANCE	TEDE (mrem)	Thyroid CDE (mrem)
	Site Boundary		
	2 Miles		
	5 Miles		
	10 Miles		

12. REMARKS (As Applicable): \_\_\_\_\_

\_\_\_\_\_

\_\_\_\_\_

13. APPROVED BY: \_\_\_\_\_ TITLE: \_\_\_\_\_ Date \_\_\_\_/\_\_\_\_/\_\_\_\_ Time \_\_\_\_\_

14. NOTIFIED BY: \_\_\_\_\_ Date \_\_\_\_/\_\_\_\_/\_\_\_\_ Time \_\_\_\_\_

15. RECEIVED BY (ORO use only): \_\_\_\_\_ Date \_\_\_\_/\_\_\_\_/\_\_\_\_ Time \_\_\_\_\_

EM-78 / Nuclear Power Facility Emergency Notification Form / March 2016 revision