

# **SITE SPECIFIC PLAN**

## **PART 3, SCORERP**



**V.C. SUMMER**

**NUCLEAR STATION**

**December 2024**

## TABLE OF CONTENTS

---

I.	Introduction.....	3-1
II.	Purpose .....	3-1
III.	Situation and Assumptions .....	3-1
	A. Situation.....	3-1
	B. Assumptions .....	3-1
IV.	Concept of Operations .....	3-2
	A. General.....	3-2
	B. Specific .....	3-2
	1. Alert and Notification .....	3-2
	2. State Emergency Operations Center (SEOC) .....	3-3
	3. Local .....	3-4
	4. Traffic Management .....	3-4
	5. Radiological Monitoring and Decontamination .....	3-5
	6. Evacuation .....	3-5
	7. Radiological Exposure Control.....	3-7
	8. Transportation.....	3-7
	9. Medical .....	3-7
	10. Communications.....	3-7
	11. Training.....	3-9
	12. Drills and Exercises .....	3-9
V.	Organization and Assignment of Responsibilities.....	3-10
	A. State .....	3-10
	B. Local .....	3-10
	C. Organizational Relationship .....	3-10
VI.	Administration and Logistics.....	3-10
VII.	Direction and Control .....	3-10
	A. SEOC .....	3-10
	B. County Emergency Operations Centers.....	3-10
	C. V. C. Summer Nuclear Station .....	3-10
	Table to Figure 1 - EPZ Evacuation Route Descriptions & Traffic Control Points .....	3-11
	Figure 1 - VCSNS 10-Mile EPZ Map .....	3-15
	Figure 2 - VCSNS 50-Mile Ingestion Exposure Pathway Emergency Planning Zone Map .....	3-16
	Figure 3 - VCSNS 10-Mile EPZ Population Distribution Map.....	3-17

## TABLE OF CONTENTS

---

Figure 4 - Organizational Relationships .....	3-18
Figure 5 - VCSNS ENF .....	3-19
VIII. Annex 1 - Alert and Notification .....	3-1-1
Attachment A - State Emergency Alert System for VCSNS Operational Area .....	3-1-A-1
IX. Annex 2 - Shelter Procedures .....	3-2-1
Attachment A - Shelters and Capacities .....	3-2-A-1
X. Annex 3 - Medical and Public Health Support.....	3-3-1
Attachment A - Map to Primary Hospital.....	3-3-A-1
Attachment B - Map to Backup Hospital .....	3-3-B-1

## **I. INTRODUCTION**

The V. C. Summer Nuclear Station (VCSNS) Site Specific Plan, Part 3, South Carolina (SC) Operational Radiological Emergency Response Plan (SCORERP) provides for the guidance, coordination and utilization of State and other resources in support of local governments in the event of a radiological incident at VCSNS located in Fairfield County. The VCSNS Radiological Emergency Plan forms an integral part of the SCORERP and addresses matters pertaining directly to VCSNS not already addressed in the SCORERP, Basic Plan.

## **II. PURPOSE**

To protect the populace and property in areas that may be affected by a radiological incident at VCSNS and to provide for off-site recovery.

## **III. SITUATION AND ASSUMPTIONS**

### **A. Situation**

1. VCSNS is located approximately 26 miles north of Columbia, SC on the southern shore of Lake Monticello and near the western border of Fairfield County. The geographic coordinates are 34° 17' 54.1" North, -81° 18' 54.6" West (See Figure 1). VCSNS is owned and operated by Dominion Energy whose corporate headquarters is in Richmond, Virginia (VA).
2. In operation since 1984, VCSNS has one pressurized water reactor that was manufactured by the Westinghouse Corporation. VCSNS has a production capability of 1,000 megawatts of power.
3. Portions of Fairfield, Lexington, Newberry, and Richland Counties are within the 10-mile Emergency Planning Zone (EPZ) (See Figure 1). All the affected counties have formulated detailed radiological emergency response annexes as part of their county Emergency Operations Plans (EOPs) and these annexes fully support the operational framework of the SCORERP.
4. Cherokee, York, Lancaster, Union, Chester, Laurens, Greenwood, Saluda, Aiken, Edgefield, Calhoun, Kershaw, Sumter, Spartanburg, Lee, McCormick, and Orangeburg counties in South Carolina, and Union County, North Carolina, lie within the 50-mile Ingestion Exposure Pathway Emergency Planning Zone (IPZ) of VCSNS (See Figure 2).
5. VCSNS prevailing winds are from the southwest.

### **B. Assumptions**

1. A radiological incident could occur at VCSNS that may cause an off-site hazard to residents and property. Planning for a radiological incident will facilitate an effective response.

2. Retention of existing licenses for Nuclear Power Plants (NPPs) is dependent on effective emergency operations of state and local jurisdictions and of the licensee, in accordance with NUREG-0654, FEMA-REP-1, REV. 2.
3. A radiological incident at VCSNS that presents off-site radiological hazards will involve the governments of Fairfield, Lexington, Newberry and Richland Counties. Therefore, State government will be required to provide direction, coordination and support in accordance with the State Code of Regulations 58-1 and 58-101.

#### **IV. CONCEPT OF OPERATIONS**

##### **A. General**

Under the direction of the Governor, South Carolina Emergency Management Division (SCEMD) and Fairfield, Newberry, Richland, and Lexington Counties will coordinate off-site response to a radiological incident at VCSNS. Through the SCEMD Director and the State Emergency Operations Center (SEOC), the Governor will exercise direction and control of State emergency operations. The Governor of South Carolina or his/her designee (normally the Director of SCEMD), will coordinate all state agencies, departments and local emergency response organizations mobilized pursuant to this plan. The South Carolina Emergency Operations Plan (SCEOP) designates Emergency Support Functions (ESFs), to ensure adequate response and efficient use of state resources. ESF responsibilities and procedures are contained in the SCEOP and its supporting Standard Operating Procedures (SOP). In the event of a radiological incident at VCSNS, federal agencies will provide support to the State under the provisions of the Nuclear/Radiological Incident Annex (NRIA) to the Response and Recovery Federal Interagency Operational Plans.

##### **B. Specific**

1. Alert and Notification
  - a. See Annex 1 (Alert and Notification Procedures).
  - b. Alert and Notification procedures are designed to inform and instruct the populace in EPZs and to notify federal, state, and local Radiological Emergency Response (RER) forces.
    - (1) Offsite Response Organizations (ORO)
      - (a) In the event of an incident at VCSNS, the primary means for notifying off-site response forces is Everbridge. Everbridge is a Dominion Energy Emergency Notification System (DEENS) that has been installed to permit simultaneous communications from VC Summer to the counties of Richland, Lexington, Newberry, and Fairfield and the SEOC (State WP) on a 24-hour per day basis. This system can be activated at the station from the Control Room, TSC, or EOF.

DEENS is used for the normal transmission of the Emergency Notification Form. This communication is transmitted via text (if available), phone call, and email.

- (b) Backup systems for Everbridge is the Emergency Management Network System (EMNet), which is a teleconferencing system that operates using both VOIP (primary) and satellite phone technology. Only one technology is required to consider the system functional.

(2) Notification Method to the Public

- (a) Integrated Public Alert and Warning System (IPAWS) is the primary means of alerting the public within the 10-mile EPZ.

- [1] Public protective actions will be communicated to residents via IPAWS when deemed appropriate by the Command Group and approved by the SCEMD Director or the Director's designee.

- [2] IPAWS messages will be coordinated through Emergency Support Function-15 (ESF-15) with the State Warning Point utilizing existing plans and procedures for the system. (South Carolina IPAWS Plan, ESF-15 SOP, State Warning Point SOP).

- (b) Route alerting is the backup to IPAWS.

2. State Emergency Operations Center (SEOC)

- a. The SEOC, 2779 Fish Hatchery Road, West Columbia, SC may be activated upon notification of an ALERT Emergency Classification Level (ECL). Direction and control of State emergency response will emanate from the SEOC.
- b. The South Carolina Department of Public Health (SCDPH) and South Carolina Department of Environmental Services (SCDES), under the auspices of ESF-8 and ESF-10, will be co-located in the SEOC. A SCDES technical representative will be dispatched to the VCSNS Emergency Operations Facility (EOF) located at 113 Ballentine Crossing Land, Ballentine, SC. After 2/4/2025, the EOF will move to the Corporate Emergency Response Center (CERC/EOF) at 5000 Dominion Boulevard in Glen Allen, Virginia 23060.
- c. VCSNS will provide technical representatives to the SEOC and the county EOCs.

- d. SCEMD will provide Radiological Emergency Preparedness (REP) and/or Regional Emergency Manager (REM) liaison officers to both host and risk county EOCs and the Dominion Energy Emergency Operations Facility (EOF).

3. Local

County/Municipal governments are responsible for local radiological emergency response within their jurisdictions, except for technical radiological assessment. County/Municipal governments will coordinate with the Governor of SC or his/her designee (normally the director if SCEMD) along with state agencies, departments and local emergency response organizations pursuant to this plan. Once the SEOC personnel have validated the request and verified available resources, additional assets may be furnished to aid local agencies.

- a. VCSNS, the counties, and the State all coordinate IPAWS messaging through a joint information system. The State sends out IPAWS messaging.

4. Traffic Management

- a. Upon declaration of a Site Area Emergency (SAE) ECL, ESF-16 (Emergency Traffic Management) led by the South Carolina Highway Patrol (SCHP) will coordinate the occupation of designated Traffic and Access Control Points (TACPs) with the County Sheriff or Chief law enforcement officer within the 10-mile EPZ.

The purpose of TACPs is to provide assistance during an evacuation and prevent access to restricted areas. TACP locations are depicted in Figure 1 as Traffic Control Points.

- b. The South Carolina Department of Natural Resources (SCDNR) will patrol Lake Monticello and segments of the Broad River in the VCSNS 10-mile EPZ to prevent water transportation access to the facility and to initiate lake clearing and evacuation procedures.
- c. VCSNS security personnel will control entrance to the site property.
- d. Only pre-designated forms of identification will be honored at security check points as outlined in the SCORERP, Basic Plan, Attachment D.
- e. Local authorities are responsible for security and traffic control within their jurisdictions during all phases of a radiological incident. ESF-13 (Law Enforcement) will coordinate requests from local authorities when additional personnel or equipment are required.

**5. Radiological Monitoring and Decontamination**

- a. See SCORERP, Basic Plan, Annex 6 (Radiological Exposure Control)
- b. Properly trained County teams will conduct radiological monitoring and decontamination of evacuees, emergency workers, emergency vehicles and equipment with technical assistance provided by SCDES as required.
- c. Fairfield, Lexington, Newberry, and Richland Counties have designated radiological monitoring and decontamination points. The location of each monitoring and decontamination point is contained in county EOPs.
- d. SCEMD is responsible for the calibration and maintenance of radiological monitoring equipment for Fairfield, Lexington, Newberry, and Richland Counties.
- e. The South Carolina Radiological Equipment and Personnel Redistribution Standard Operating Procedures can be activated to provide personnel and equipment support in the event of an incident at VCSNS.

**6. Evacuation**

- a. When a State of Emergency has been declared, the Governor may issue orders to evacuate all or portions of the 10-mile EPZ surrounding VCSNS (See Figure 1). Orders for evacuation of the 2-mile EPZ may precede orders for evacuation of other zones within the 10-mile EPZ.
- b. Evacuation will be ordered at the General Emergency ECL unless it is deemed unsafe or unfavorable due to a hostile action based (HAB) incident or other impediment(s). Evacuation could be ordered at the Site Area Emergency or ALERT ECLs if the potential for further degradation of plant conditions appears imminent.
- c. During a rapidly progressing incident, VCSNS officials may recommend evacuation to county authorities who may then recommend and coordinate the evacuation of impacted zones.
- d. The Sheriff (as Chief Law Enforcement Officer of the affected county) will, in coordination with the SCHP and other law enforcement agencies, coordinate evacuation activities in accordance with the affected county's EOP.
- e. Residential population (based on the 2024 Population Update Analysis)

- (1) Population Densities and Evacuation Times:



Population Densities		
County	Zone	Population
Fairfield	A-0	171
Fairfield	A-1	345
Fairfield	A-2	513
Fairfield	B-1	232
Fairfield	B-2	295
Fairfield	C-1	347
Fairfield	C-2	1,282
Richland	D-1	3,291
Lexington	D-2	5,324
Newberry	E-1	493
Newberry	E-2	2,183
Newberry	F-1	247
Newberry	F-2	1,499
<b>Entire EPZ</b>		<b>16,222</b>

Please see the Evacuation Time Estimate (ETE) study for complete evacuation information.

- (2) Evacuation confirmation time is 4-5 hours.
  - (3) Population Distribution Map (See Figure 3).
- f. Evacuation Zones, Landmark and Boundary Descriptions (See Table to Figure 1).
  - g. Fairfield, Lexington, Newberry, and Richland Counties have designated evacuation routes for persons living, working and transiting the 10-mile EPZ. These routes lead to primary reception centers/shelter areas (See Figure 1).
  - h. The affected county/counties will provide transportation to those evacuees who are without transportation and to individuals with functional needs requiring special transportation. State assistance may be requested. The number of individuals needing transportation will be determined through the special assistance postcard mailed annually . Special transportation needs are addressed in the Fairfield, Lexington, Newberry and Richland County EOPs.
  - i. All evacuees that arrive at the shelters or reception centers will be processed as outlined in Annex 2 (Reception Centers and Shelters). Each evacuee, including those who elect not to accept temporary shelters, will be monitored, registered, and processed. For control and re-entry purposes, each county will maintain records for contacting evacuees. Temporary housing should be located at least five miles from the EPZ outer boundary (15 miles from the nuclear facility site).

- j. See SCORERP Basic Plan for reentry, return, and relocation information.

7. Radiological Exposure Control

See SCORERP, Basic Plan, Annex 6 (Radiological Exposure Control).

8. Transportation

- a. The VCSNS 10-mile EPZ is covered by a road system that provides multiple primary and alternate routes for evacuation and access to the area. There are no obstacles that would impede rapid evacuation or response.
- b. Counties and municipal governments have plans for acquiring emergency transportation in the event of a radiological incident. The means for evacuating schools, jails, hospitals, nursing homes, individuals with functional needs and residents without private transportation are identified in county plans.
- c. State transportation resources may be requested to augment any additional county transportation requirements.

9. Medical

See SCORERP, Basic Plan, Annex 5 (Medical and Public Health Support).

10. Communications

- a. In the event of an emergency at VCSNS, the site is capable of notifying State and local emergency response networks on a 24-hour basis. The VC Summer Nuclear Station Emergency Manager (SEM) or designee is responsible for notifying the State Warning Point (SWP)/SEOC and the Fairfield, Lexington, Newberry, and Richland County Warning Points/EOCs. Communication between the VCSNS, State and local emergency operations centers are maintained through the following means:
  - (1) Everbridge is a Dominion Energy Emergency Notification System (DEENS) that has been installed to permit simultaneous communications from VC Summer to the counties of Richland, Lexington, Newberry, and Fairfield and the SEOC (State WP) on a 24-hour per day basis. This system can be activated at the station from the Control Room, TSC, or EOF. DEENS is used for the normal transmission of the Emergency Notification Form. This communication is transmitted via text, phone call, and email.
  - (2) EMNet connects the VCSNS Control Room, Technical Support Center (TSC) and EOF with the SWP/SEOC and

Fairfield, Lexington, Newberry, and Richland County Warning Points/EOCs. EMNet is used as a backup notification system for providing updated information concerning VCSNS status.

- (3) A radio channeled to the SCEMD Local Government Radio (LGR) network at the VCSNS EOF with the capability of communicating with the SEOC, counties and the SCDES Mobile Radiological Laboratory (MRL).
  - (4) A conference bridge line will be established by SCEMD as the primary means for offsite response organizations' (OROs) protective action discussion and decision making.
  - (5) An EMNet decision line (DL) is in the VCSNS EOF, SEOC, and Fairfield, Lexington, Newberry, and Richland County EOC's. This DL is the backup communication line for decision making on protective actions.
- b. County communications officers are responsible for communications within their jurisdiction during a radiological emergency. Their responsibilities include the activation of communications systems, the maintenance and operation of the primary and alternate systems on a 24-hour basis and reporting the system's status during an emergency. The responsible parties are:
- (1) Fairfield County: Communications Officer, responsible to the Director, Fairfield County Emergency Management Department.
  - (2) Lexington County 911: Communications Officer (Director of Emergency Communications/911), responsible to the Director of Emergency Services.
  - (3) Newberry County: The County Sheriff is the County Communications Officer.
  - (4) Richland County: Communications Officer, responsible to the Director, Department of Emergency Services.
- c. Communications with federal emergency response organizations shall be tested quarterly. VCSNS tests Everbridge and the EMNet system monthly and the DL on a quarterly basis. Communications between the nuclear site, State and local EOCs and field assessment teams shall be tested annually. Communication drills will also include the aspect of understanding the content of messages.

11. Training

County directors and directors of State agencies are responsible for ensuring Radiological Emergency Response (RER) training is conducted in accordance with the SCORERP, Basic Plan, Annex 2 (Training).

12. Drills and Exercises

- a. See SCORERP, Basic Plan, Annex 4 (Exercises and Drills).
- b. Exercises are designed to test all elements of emergency preparedness plans pertaining to VCSNS and the capability of support elements in the 10-mile EPZ cited in such plans. A biennial exercise will be conducted and will involve mobilizing state and local government personnel and resources adequate to verify capability to respond to an incident scenario (simulated emergency) at VCSNS. The exercise will be evaluated and critiqued by FEMA.
- c. Drills are supervised periods of instruction designed to test, develop and maintain skills of individuals who form a part of radiological emergency response organizations. County directors shall ensure that drills are conducted by qualified instructors in the frequency listed below:
  - (1) Communication drills: See SCORERP, Basic Plan, Annex 4 (Exercises and Drills)
  - (2) Fire Drills: Annual fire drills at VCSNS will involve the participation of one of the following community fire departments:
    - (a) Blair Volunteer Fire Department
    - (b) Greenbriar-Bethel Volunteer Fire Department
    - (c) Jenkinsville-Monticello Volunteer Fire Department
    - (d) Community Volunteer Fire Department
    - (e) Feasterville Volunteer Fire Department
    - (f) Lebanon Volunteer Fire Department
  - (3) Medical Services Drills (MSD):
    - (a) Annually, a medical emergency drill, involving a simulated contaminated individual and containing provisions for participation by local support services organizations (i.e., ambulance and support hospital) is conducted (Known as MS-1). The offsite portions of the medical drill may be performed as part of the required biennial exercise.

- (b) Annually, the State and county EMS are evaluated by FEMA. A simulated radiologically contaminated/injured casualty from the VCSNS 10-mile EPZ general population will be treated and transported to Lexington Medical Center, Lexington County or Prisma Health Richland Hospital, Richland County, alternately. (Known as MSD).

## **V. ORGANIZATION AND ASSIGNMENT OF RESPONSIBILITIES**

- A. State (See SCORERP, Basic Plan, paragraph VIII)
- B. Local (See Fairfield, Lexington, Newberry, and Richland County EOPs)
- C. Organizational Relationships (See Figure 4)

## **VI. ADMINISTRATION AND LOGISTICS**

- A. See the South Carolina Emergency Operations Plan (SCEOP), Section X, (Administration, Logistics and Finance).
- B. Counties provide their own administrative and logistic support. Requests for augmentation may be submitted in accordance with the SCEOP.

## **VII. DIRECTION AND CONTROL**

- A. SEOC
- B. County Emergency Operations Centers
  - 1. Fairfield: 100 Tidewater Rd., Winnsboro, SC 29180
  - 2. Lexington: 434 Ballpark Rd., Lexington, SC 29072
  - 3. Newberry: County Sheriff's Office and Emergency Operations Center, 540 Wilson Road, Newberry, SC 29108.
  - 4. Richland: County Emergency Services Complex, 1410 Laurens Street, Columbia, SC 29204.

- C. VCSNS

The EOF is located at 113 Ballentine Crossing Land, Ballentine, SC. After 2/4/2025, the EOF will move to the Corporate Emergency Response Center (CERC/EOF) at 5000 Dominion Boulevard in Glen Allen, Virginia 23060. The utility (JIC) is combined with the SEOC.

**TABLE 1 TO FIGURE 1 - VCSNS 10-MILE EPZ MAP Zone Descriptions**

<b>ZONES</b>	<b>LANDMARK DESCRIPTIONS</b>	<b>BOUNDARY DESCRIPTIONS</b>
A-0	Mayo Creek Area, Monticello Reservoir Area within 2 miles of VCSNS	In Fairfield County: within a 2-mile radius of the VCSNS, bordered on the south by both sides of Parr Road; on the west by the Broad River, from the Broad River (at a 2-mile radius from VCSNS) along the south side of the dirt extension of Cole Trestle Road, and along the east side of Cole Trestle Road, to Friendship Church; on the north by a line from Friendship Church on Cole Trestle Road east across Monticello Reservoir to the northern junction of S-213 and S-215; on the east by both sides of S-215 back to the Parr Road.
A-1	Dawkins Community	In Fairfield County: all portions of that area bounded on the south by a line from south of the town of Monticello on S-215, due west to Friendship Church; south along Cole Trestle Road; west along dirt road to the Broad River; north along the Broad River to Dawkins Road to Meadow Lake Road; and east to S-215 and to the line south of the town of Monticello.
A-2	Blair, Salem Crossroads and Strother Communities	In Fairfield County: all that area bounded on the south by both sides of Dawkins Road, Meadow Lake Road, and Clark Bridge Road; on the west by the Broad River, on the north by Buckhead Road; and on the east by Possum Branch Road to S-34, then S-34 east to the junction of S-34 and Clark Bridge Road.
B-1	Monticello Community	In Fairfield County: that area bounded on the south by both sides of S-213; on the west by both sides of S-215; on the north by both sides of Clark Bridge Road; and on the east by the Little River.
B-2	Shady Grove and Lebanon Communities	In Fairfield County: that area bounded on the south by both sides of Reservoir Road, Landis Road, and S-213; on the West by the Little River; on the north by both sides of Clarks Bridge Road and S-34; and on the east by both sides of Jackson Creek Road.
C-1	Jenkinsville Community	In Fairfield County: that area bounded on the south by the Broad River; on the west by Parr Road and both sides of S-213 and S-215; on the north by both sides of S-213 and Landis Road; and on the east by both sides of Koon Store Road, Glenn's Bridge Road, S-215, and Wallaceville Road.
C-2	Rion, Greenbriar and Union-Hillcrest Communities	In Fairfield County: that area bounded on the south by the Broad River; on the west by both sides of Wallaceville Road, S-215, Glenn's Bridge Road, Koon Store Road, and Landis Road on the north by both sides of Reservoir Road, Rion Road and Kelly

<b>ZONES</b>	<b>LANDMARK DESCRIPTIONS</b>	<b>BOUNDARY DESCRIPTIONS</b>
		Miller Road to include both Kelly Miller and Greenbriar Schools; and on the east by both sides of S-269 and Bookmans Mill Road; then along the Fairfield County line to the Broad River.
D-1	Dearfield and Spring Hill Communities	In Richland County: that area bounded on the south by both sides of Kennerly Road, Mt. Vernon Church Road and I-26; on the west by the Richland County line; and on the north and east by the Broad River.
D-2	Chapin	In Lexington County: Bounded on the north, west, and east by the Lexington County line. Bounded on the south by US-76 (Chapin Rd.), Sid Bickley Rd., Old Lexington Rd. including Chapin Elementary School, Old Bush River Rd., until it ends, across the water to Bear Creek Rd., Amicks Ferry Rd., Lester Frick Rd., and St. Peter's Church Rd., to the Lexington/ Newberry County Line.
E-1	Peak, Pomaria and Peak Road	In Newberry County: that area bounded on the south from Peak (by the Newberry County line) and both sides of Capers Chapel Road; on the west by both sides of US-176 and the Town of Pomaria and New Hope Road; on the north by Cannons Creek; and on the east by the Broad River.
E-2	Little Mountain Community	In Newberry County: that area bounded on the south by both sides of Nursery Road, US-76, the Town of Little Mountain, and US-76 including Mid-Carolina School; on the west by both sides of Old Jolly Street Road to I-26 then east to S-773 and then north on S-773 to Pomaria; on the north by both sides of US-176; and on the east by the Newberry County line.
F-1	New Hope, Leitzsey Road and Huey Farm Road Communities	In Newberry County: that area bounded on the south by Cannons Creek; on the west by both sides of New Hope Road; and on the north and east by the Broad River
F-2	Glymphville, Garmany School Area, Mt. Pleasant Road and Graham Road	In Newberry County: that area bounded on the south by both sides of I-26; on the west by both sides of Bachman Chapel Road, Mud Creek Road, Livingston Road, and Ringer Road; on the north by both sides of Mt. Pleasant Road, Broad River Road, and S-34; and on the east by the Broad River, both sides of New Hope Road, S-773, and US-176.

## TRAFFIC CONTROL POINTS

<p style="text-align: center;"><u>State</u></p> <p>ST-01: S-215 and St Barnabas Church Road  ST-02: S-215 and S-213  ST-03: S-215 and Glenn's Bridge Road  ST-04: Pearson Road and Cole Trofel Road  ST-05: SC-213 and Broad River Road</p>	<p style="text-align: center;"><u>Newberry County</u></p> <p>NE-01: US-176 and SC-213  NE-02: US-176 and SC-219  NE-03: SC-219 and Hillbrook Lane  NE-04: SC-34 and Broad River Road  NE-05: US-176 and SC-34  NE-06: SC-34 and Hillbrook Lane  NE-07: US-176 and Holy Trinity Church Road</p>
<p style="text-align: center;"><u>Fairfield County</u></p> <p>FA-01: SC-34 and SC-215  FA-02: SC-34 and US-321 Bypass  FA-03: SC-269 and US-321 Bypass  FA-04: SC-213 and US-321  FA-05: SC-34 and Clark Bridge Road</p>	<p style="text-align: center;"><u>Richland County</u></p> <p>RI-01: Broad River Road and Mt. Vernon Church Road  RI-02: Broad River Road and W. Shady Grove Road  RI-03: Broad River Road and Shady Grove Road  RI-04: Broad River Road and Koon Road  RI-05: Broad River Road and Harbison Road  RI-06: Blythewood Road and I-77  RI-07: Blythewood Road and U.S. 21  RI-08: Blythewood Road and Muller Road  RI-09: Muller Road and Tobacco Barn Road</p> <p><b>Monitoring Stations</b>  Broad River Rd &amp; I-26 Ex 97  Broad River Rd &amp; I-26 Ex 101  Broad River Rd &amp; I-26 Ex 102  Broad River Rd &amp; St. Andrews Rd  Broad River Rd &amp; I-20  U.S. 321 &amp; Muller Rd</p> <p>Request SCDOT - To use mobile message board to route traffic on  I-20E to 277 N and 277N to I-77N</p>
<p style="text-align: center;"><u>Lexington County</u></p> <p>LE-01: I-26 and Columbia Avenue  LE-02: US-76 and Crooked Creek Road  LE-03: Old Lexington Highway &amp; Murray Lindler Road  LE-04: Amicks Ferry Road and Sandbar Road  LE-05: Saint Peters Church Road and Westwoods Drive  LE-06: US-76 and Skylark Lane  LE-07: Meadowlark Road and Dreher Island Road</p>	

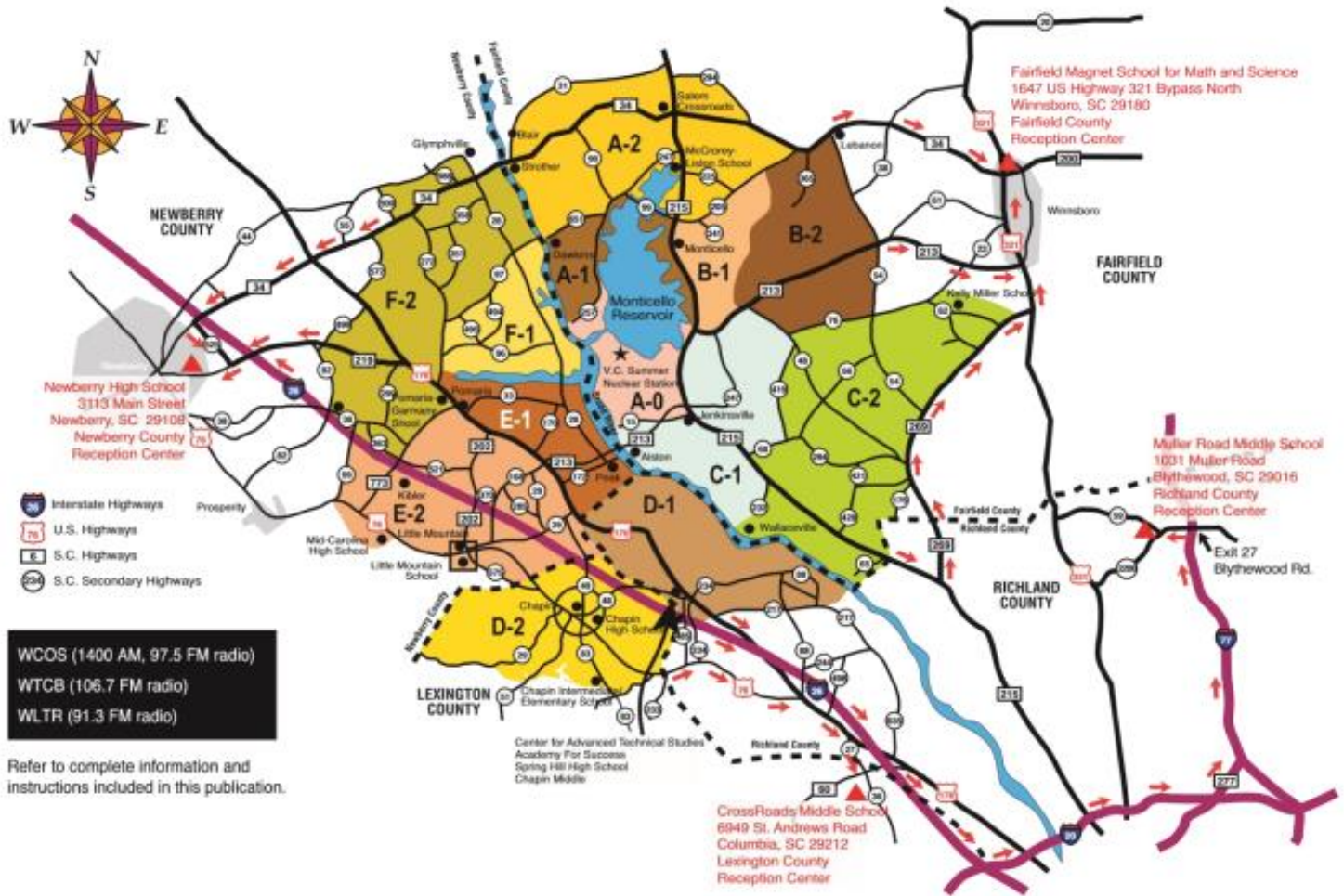


### **Primary Evacuation Routes**

- A-0 SC 213 east to US 321, north to Fairfield Magnet School for Math and Science
- A-1 SR 257 north to SR 99, north to SC 34, east to US 321, north to Fairfield Magnet School for Math and Science
- A-2 SC 34 east to US 321, north to Fairfield Magnet School for Math and Science
- B-1 SC 213 east to US 321, north to Fairfield Magnet School for Math and Science
- B-2 SC 213 east to US 321, north to Fairfield Magnet School for Math and Science
- C-1 SC 215 south to SC 269, north to US 321, north to Fairfield Magnet School for Math and Science
- C-2 SC 215 south to SC 269, north to US 321, north to Fairfield Magnet School for Math and Science
- D-1 US 26 east, 20 east, 277 north, 77 north, Exit 27 Blythewood Rd, to State Rd S-40-59 Muller Rd to Muller Rd Middle School
- D-2 US 26 east, Exit 103 Harbison Blvd to St. Andrews Rd, west to Crossroads Middle School
- E-1 US 176 west, on SC 219 south/west, to Newberry High School on right
- E-2 US 26 west, on SC 219 south/west, to Newberry High School on right
- F-1 Broad River Road north, to SC 34 south, to Hillbrook Lane west, on SC 219 south/west, to Newberry High School on right
- F-2 US 176 north, to SC 34 south to Hillbrook Lane west, on SC 219 south/west, to Newberry High School on right

**See Figure 1 for school pickup points, shelters, hospitals, boat ramps and other points on map.**

FIGURE 1 - VCSNS 10-MILE EMERGENCY PLANNING ZONE MAP







**FIGURE 3 - VCSNS 10-MILE EPZ POPULATION DISTRIBUTION MAP**

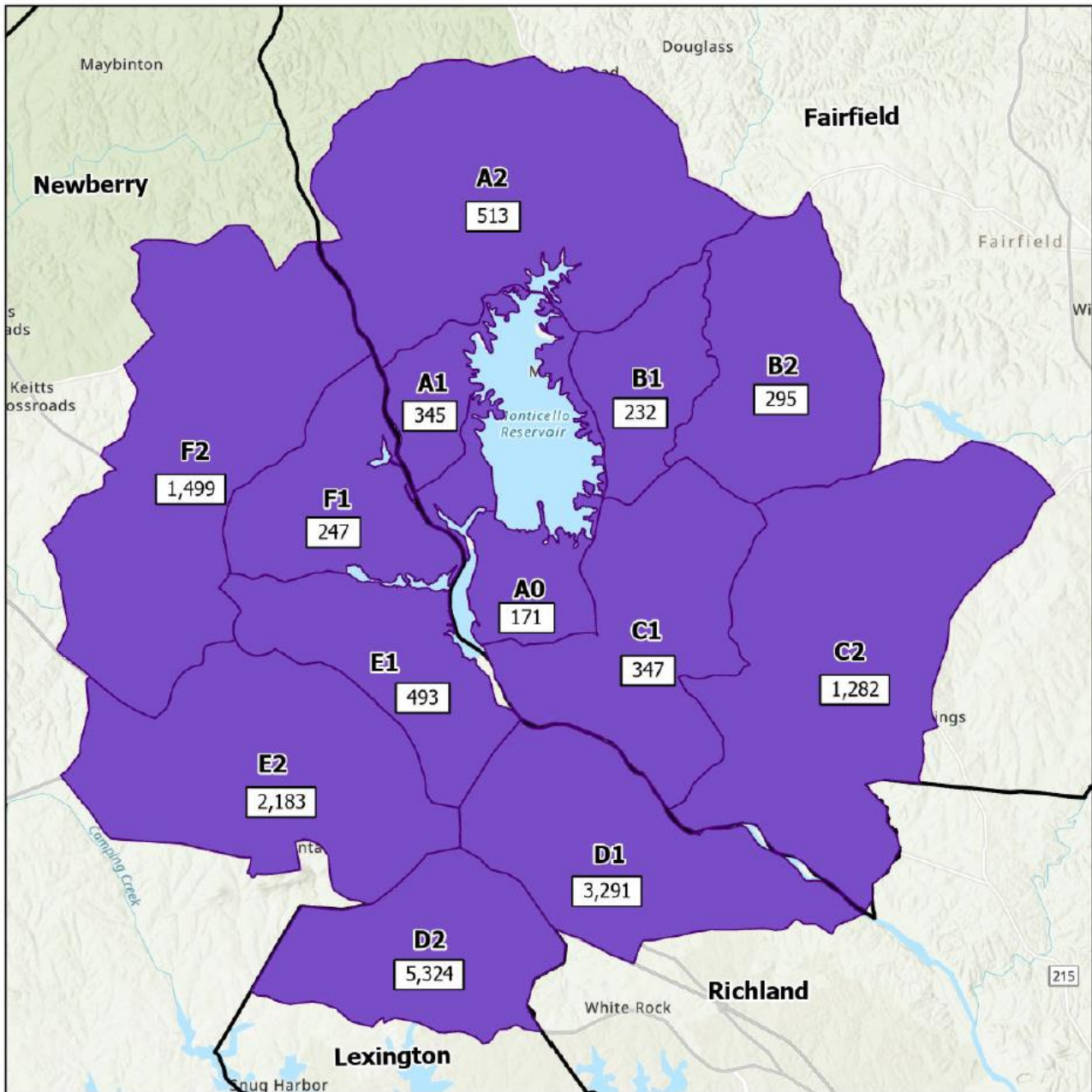
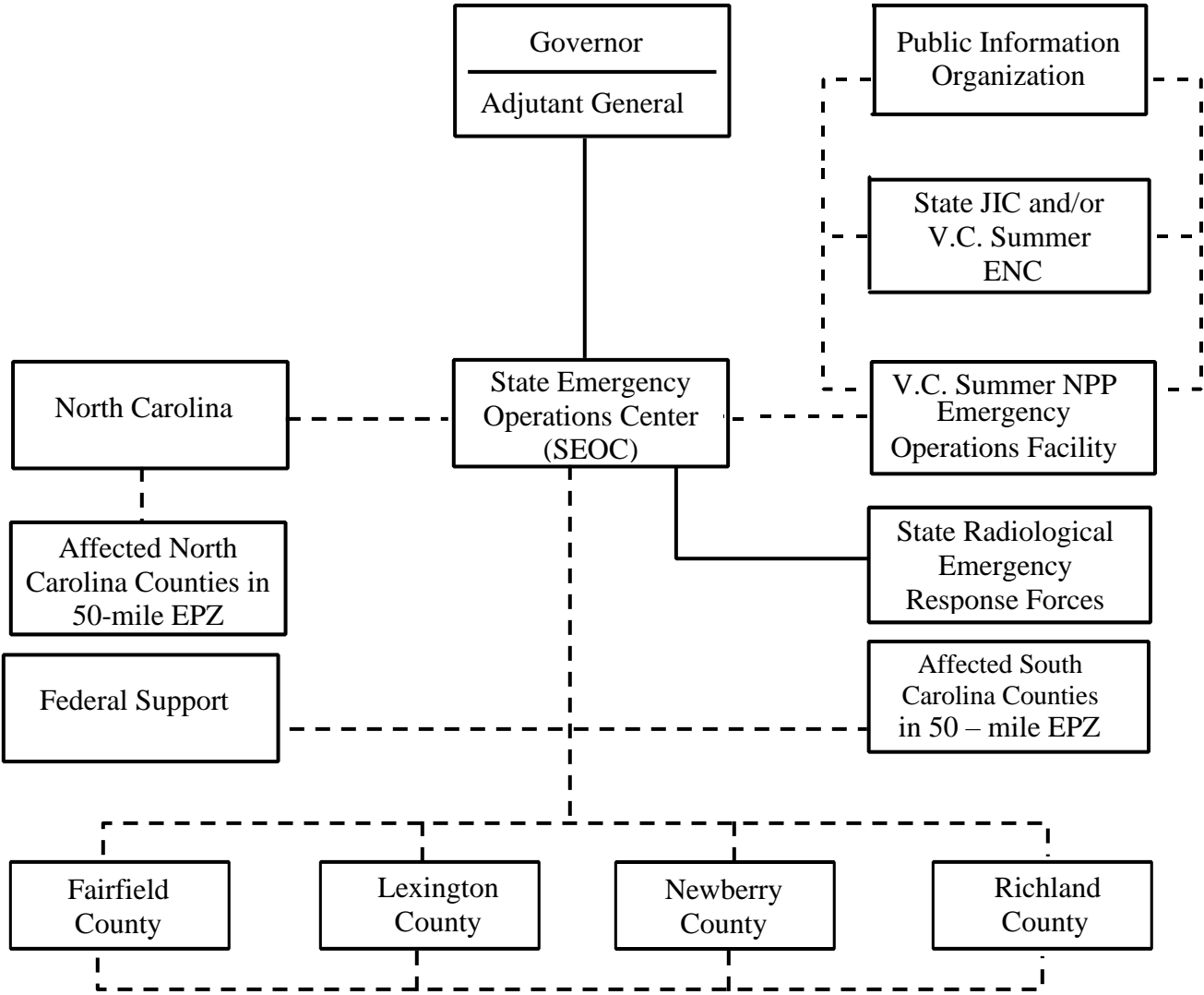


FIGURE 4 - ORGANIZATIONAL RELATIONSHIPS



Affected Counties in 50 - mile EPZ:

<u>South Carolina</u>		<u>North Carolina</u>	
Cherokee	Greenwood	Union	
York	Saluda		
Chester	Aiken		
Lancaster	Edgefield		
Union	Calhoun		
Kershaw	Sumter		
Laurens	Spartanburg		
McCormick	Lee		
Orangeburg			

Direction

Coordination

## FIGURE 5 - VCSNS EMERGENCY NOTIFICATION FORMS

### Initial Message for Unusual Event, Alert, Site Area Emergency

<b><u>NUCLEAR POWER PLANT EMERGENCY NOTIFICATION FORM</u></b>		
MESSAGE # _____	Confirmation Phone # _____	AUTHENTICATION # _____
1. <b>EVENT:</b> <b>Message Type:</b> 2. <b>AFFECTED SITE:</b> 3. <b>EMERGENCY CLASSIFICATION:</b> 4. <b>EAL#</b> <b>Declaration Date/Time:</b> <b>EAL DESCRIPTION:</b> 5. <b>RELEASE TO THE ENVIRONMENT</b> (caused by the emergency): 6. <b>PROTECTIVE ACTION RECOMMENDATIONS:</b>		
<b>APPROVED BY:</b> <b>APPROVED DATE/TIME:</b> <b>NOTIFIED BY:</b> <b>NOTIFIED DATE/TIME:</b>		

### Update Message for Unusual Event, Alert, Site Area Emergency

<b><u>NUCLEAR POWER PLANT EMERGENCY NOTIFICATION FORM</u></b>		
Message # {Message Number}	Confirmation Phone # {Confirmation Number}	AUTHENTICATION # _____
1. EVENT: {Drill/Emergency}      Message Type: Update 2. AFFECTED SITE: {V.C. Summer} 3. EMERGENCY CLASSIFICATION: {Classification} 4. EAL# {EAL}                      Declaration Date/Time: {Classification Date/Time} <b>EAL DESCRIPTION:</b> {EAL Description} 5. <b>RELEASE TO THE ENVIRONMENT</b> (caused by the emergency): {Release Status} 6. <b>PROGNOSIS:</b> Upgrade in classification or PAR change is likely before next update notification: {Yes or No} 7. <b>METEOROLOGICAL DATA:</b>  <b>Wind Direction from:</b> {Avg Wind Direction From (deg)} degrees <b>Wind Speed:</b> {Avg Wind Speed (mph)} mph <b>Precipitation:</b> {Precipitation (Inches)} inches 8. <b>REMARKS:</b> {Remarks}		
<b>APPROVED BY:</b> {Approver} <b>APPROVED DATE/TIME:</b> {Approval Date/Time} <b>NOTIFIED BY:</b> {Message Sender} <b>NOTIFIED DATE/TIME:</b> {Today's Date} {Current Time}		

**Initial Message for General Emergency**

<b><u>NUCLEAR POWER PLANT EMERGENCY NOTIFICATION FORM</u></b>		
MESSAGE #	Confirmation Phone #	AUTHENTICATION # _____
<p>1. <b>EVENT:</b>                      <b>Message Type:</b></p> <p>2. <b>AFFECTED SITE:</b></p> <p>3. <b>EMERGENCY CLASSIFICATION:</b></p> <p>4. <b>EAL#</b>                      <b>Declaration Date/Time:</b></p> <p>    <b>EAL DESCRIPTION:</b></p> <p>5. <b>RELEASE TO THE ENVIRONMENT</b> (caused by the emergency):</p> <p>6. <b>PROTECTIVE ACTION RECOMMENDATIONS:</b>     EVACUATE:     SHELTER:     <u>CONSIDER THE USE OF KI (POTASSIUM IODIDE) IN ACCORDANCE WITH ORO PLANS AND POLICIES.</u>     OTHER:</p>		
<p><b>APPROVED BY:</b></p> <p><b>APPROVED DATE/TIME</b></p> <p><b>NOTIFIED BY:</b></p> <p><b>NOTIFIED DATE/TIME:</b></p>		

## Update Message for General Emergency

<b><u>NUCLEAR POWER PLANT EMERGENCY NOTIFICATION FORM</u></b>		
<b>Message #</b> <u>{Message Number}</u>	<b>Confirmation Phone #</b> <u>{Confirmation Number}</u>	<b>AUTHENTICATION #</b> _____
<p><b>1. EVENT:</b> <u>{Drill/Emergency}</u> <span style="float: right;"><b>Message Type:</b> <u>Update</u></span></p> <p><b>2. AFFECTED SITE:</b> <u>V.C. Summer</u></p> <p><b>3. EMERGENCY CLASSIFICATION:</b> <u>{Classification}</u></p> <p><b>4. EAL#</b> <u>{EAL}</u> <span style="margin-left: 20px;"><b>Declaration Date/Time:</b> <u>{Classification Date/Time}</u></span></p> <p><b>EAL DESCRIPTION:</b> <u>{EAL Description}</u></p> <p><b>5. RELEASE TO THE ENVIRONMENT</b> (caused by the emergency): <u>{Release Status}</u></p>		
<p><b>6. PROTECTIVE ACTION RECOMMENDATIONS:</b></p> <ul style="list-style-type: none"> <li>• <b>EVACUATE:</b> <u>{PAR Evacuate}</u></li> <li>• <b>SHELTER:</b> <u>{PAR Shelter}</u></li> <li>• <b>PAR OTHER:</b> <u>{PAR Other}</u></li> </ul> <p><u>CONSIDER THE USE OF KI (POTASSIUM IODIDE) IN ACCORDANCE WITH ORO PLANS AND POLICIES.</u></p>		
<p><b>7. PROGNOSIS:</b> Upgrade in classification or PAR change is likely before next update notification: <u>{Yes or No}</u></p>		
<p><b>8. METEOROLOGICAL DATA:</b></p> <p><b>Wind Direction from:</b> <u>{Avg Wind Direction From (deg)} degrees</u> <b>Wind Speed:</b> <u>{Avg Wind Speed (mph)} mph</u>  <b>Precipitation:</b> <u>{Precipitation (Inches)} inches</u> _</p>		
<p><b>9. REMARKS:</b> <u>{Remarks}</u></p>		
<p><b>APPROVED BY:</b> <u>{Approver}</u></p> <p><b>APPROVED DATE/TIME:</b> <u>{Approval Date/Time}</u></p> <p><b>NOTIFIED BY:</b> <u>{Message Sender}</u></p> <p><b>NOTIFIED DATE/TIME:</b> <u>{Today's Date}</u> <u>{Current Time}</u></p>		