

SITE SPECIFIC PLAN

PART 5, SCORERP



VOGTLE ELECTRIC GENERATING PLANT

December 2024

TABLE OF CONTENTS

I.	Introduction.....	5-1
II.	Purpose	5-1
III.	Situation and Assumptions	5-1
	A. Situation.....	5-1
	B. Assumptions	5-2
IV.	Concept of Operations	5-2
	A. General.....	5-2
	B. Specific	5-2
	1. Alert and Notification	5-2
	2. State Emergency Operations Center (SEOC)	5-3
	3. Local	5-4
	4. Traffic Management.....	5-4
	5. Radiological Monitoring and Decontamination.....	5-4
	6. Evacuation.....	5-5
	7. Radiological Exposure Control.....	5-7
	8. Transportation	5-7
	9. Medical	5-7
	10. Communications	5-7
	11. Training.....	5-9
	12. Drills and Exercises	5-9
V.	Organization and Assignment of Responsibilities.....	5-9
	A. State	5-9
	B. Local	5-9
	C. Organizational Relationships.....	5-9
VI.	Administration and Logistics.....	5-9
VII.	Direction and Control	5-10
	A. SEOC	5-10
	B. County Emergency Operations Center	5-10
	C. Vogtle Electric Generating Plant	5-10
	D. State of Georgia	5-10

Table to Figure 1 – Vogtle Electric Generating Plant 10-mile EPZ Map

Zone Descriptions

Figure 1 – Vogtle Electric Generating Plant 10-mile EPZ Map

Zone Descriptions.....

SCORERP

TABLE OF CONTENTS

Figure 2 – VEGP 50-Mile Ingestion Exposure Pathway Emergency Planning Zone Map.....	5-13
Figure 3 – VEGP 10-Mile EPZ Population Distribution Map	5-14
Figure 4 – Organizational Relationships	5-15
Figure 5 – Emergency Notification Form.....	5-16
Annex 1, Alert and Notification	5-1-1
Attachment A – State Emergency Alert System for the VEGP Operational Area	5-1-3
Annex 2, Reception Centers and Shelters.....	5-2-1
Attachment A - Shelters and Capacities	5-2-A-1
Annex 3, Health and Medical Support	5-3-1
Attachment A - Map to Primary Hospital-Burke County Medical Center	5-3-A-1
Attachment B - Map to Backup Hospital-Doctors Hospital.....	5-3-B-1

I. INTRODUCTION

The Vogtle Electric Generating Plant (VEGP) Site Specific Plan, Part 5 of the South Carolina Operational Radiological Emergency Response Plan (SCORERP), provides for the guidance, coordination, and utilization of State and other resources in support of local governments in the event of a radiological incident at VEGP, located in Burke County, Georgia. The VEGP Site Specific Plan forms an integral part of the SCORERP and addresses matters pertaining directly to VEGP not already addressed in the SCORERP Basic Plan.

II. PURPOSE

To protect the populace and property in areas that may be affected by a radiological incident at VEGP and to provide for off-site recovery.

III. SITUATION AND ASSUMPTIONS**A. Situation**

1. VEGP is located in the eastern portion of Burke County, Georgia, approximately 26 miles southeast of Augusta, Georgia. The geographic coordinates are 33.14218 North, -81.762389 West (See Figure 1). VEGP is jointly owned by Georgia Power Company, Oglethorpe Power Corporation, the Municipal Electric Authority of Georgia, and the city of Dalton.
2. VEGP units 1 and 2 became operational in 1987 and 1989 respectively. The facility utilizes two pressurized water reactors manufactured by the Westinghouse Electric Corporation with a total production capacity of 2,430,000 kilowatts of power. Two new pressurized water reactors (PWR) have completed construction. Unit 3 began operating in 2023 with Unit 4 going online in 2024. Units 3 & 4 produce 2,234 megawatts of power.
3. Portions of Aiken, Allendale and Barnwell Counties in South Carolina and Burke County in Georgia are within the 10-mile Emergency Planning Zone (EPZ) (See Figure 1). All of the affected SC counties have formulated detailed radiological emergency response annexes as part of their county Emergency Operations Plans (EOPs) and these annexes fully support the operational framework of SCORERP.
4. Aiken, Allendale, Barnwell, and portions of Bamberg, Colleton, Edgefield, Hampton, Lexington, McCormick, Orangeburg, and Saluda Counties of South Carolina lie within the 50-mile Ingestion Pathway Emergency Planning Zone (IPZ) of VEGP (See Figure 2).
5. There are no prevailing wind directions in VEGP area.
6. The major portion of the 10-mile EPZ in South Carolina encompasses the Department of Energy (DOE) Savannah River Site (SRS). SRS, pursuant to a memorandum of agreement, will be responsible for all emergency response

actions on SRS whenever an emergency occurs at VEGP (See SCORERP, Basic Plan, Annex 9).

B. Assumptions

1. A radiological incident could occur at VEGP that may cause an off-site hazard to residents and property. Planning for a radiological incident will facilitate an effective response.
2. Retention of existing licenses for Nuclear Power Plants (NPP) is dependent on effective emergency operations of state and local jurisdictions and of the licensee in accordance with NUREG 0654, FEMA-REP-1 REV.2.
3. A radiological incident at VEGP that presents off-site radiological hazards will involve the governments of Aiken, Allendale and Barnwell Counties of South Carolina and Burke County, Georgia. Therefore, state government will be required to provide direction, coordination, and support in accordance with the State Code of Regulations 58-1 and 58-101.

IV. CONCEPT OF OPERATIONS

A. General

Under the direction of the Governor, South Carolina Emergency Management Division (SCEMD) and Aiken, Allendale and Barnwell Counties will coordinate off-site response to a radiological incident at VEGP. Through the SCEMD Director and the State Emergency Operations Center (SEOC), the Governor will exercise direction and control of state emergency operations. The SCEMD Director will coordinate all state agencies, departments and local emergency response organizations mobilized pursuant to this plan. The South Carolina Emergency Operations Plan (SCEOP) designates Emergency Support Functions (ESF) to ensure adequate response and efficient use of state resources. ESF responsibilities and procedures are contained in the SCEOP and its supporting Standard Operating Procedures (SOPs). In the event of a radiological incident at VEGP, Federal Agencies will provide support to the State under the provisions of the Nuclear/Radiological Incident Annex (NRIA) to the Response and Recovery Federal Interagency Operational Plans.

B. Specific

1. Alert and Notification
 - a. See Annex 1 (Alert and Notification)
 - b. Alert and Notification procedures are designed to inform and instruct the populace in EPZs and also to notify federal, state and local Radiological Emergency Response (RER) forces.
 - (1) In the event of an incident at VEGP, the primary means for notifying off-site response forces is Everbridge, a dedicated

communications system. Backup to Everbridge are commercial telephone lines, Local Government Radio (LGR) and Southern Company Communications.

- (2) A fixed siren system is the primary means used to alert the public within the 10-mile EPZ. CodeRED is the backup to the siren system. Route alerting is the back up to the sirens and CodeRED.
- (3) Public protective actions will be communicated to residents via the Integrated Public Alert and Warning System (IPAWS) when deemed appropriate by the Command Group and approved by the SCEMD Director or the Director's designee.

2. State Emergency Operations Center (SEOC)

- a. The SEOC, 2779 Fish Hatchery Road, West Columbia, South Carolina 29172, may be activated upon notification of an ALERT Emergency Classification Level (ECL). Direction and control of State emergency response forces will emanate from the SEOC.
- b. The South Carolina Department of Public Health (SCDPH) and South Carolina Department of Environmental Services (SCDES), under the auspices of ESF-8 and ESF-10, will be co-located in the SEOC. A technical representative from SCDES will be dispatched to the VEGP Emergency Operations Facility (EOF) located at Southern Nuclear Operating Company, 3535 Colonnade Parkway, Birmingham, Alabama. A SCDES technical representative will also be dispatched to the affected county or counties.
- c. VEGP will provide technical representatives to the SEOC and the county EOCs. SCEMD representatives will be dispatched to the VEGP EOF in Birmingham, Alabama. SCEMD will operate a State Joint Information Center (JIC)/Joint Information System (JIS) out of SCEMD located at 2779 Fish Hatchery Road, West Columbia, South Carolina 29172. VEGP will maintain a separate Joint Information Center (JIC) located at 636 Woodlands Road, Waynesboro, Georgia 30830. SCEMD ESF-15 may provide a liaison to the Waynesboro JIC as necessary
- d. SCEMD will provide REP and/or REM (Regional Emergency Manager) liaison officers to both host and risk county EOCs and the Southern Nuclear Emergency Operations Facility (EOF).

3. Local

County/Municipal governments are responsible for local radiological emergency response within their jurisdictions, except for technical radiological assessment. County/Municipal governments will coordinate with the Governor of SC or his/her designee (normally the director if SCEMD) along with state agencies, departments and local emergency response organizations pursuant to this plan. Once the SEOC personnel have validated requests and verified available resources, additional assets may be furnished to aid local agencies.

4. Traffic Management

- a. Upon declaration of a Site Area Emergency (SAE) ECL, ESF-16 (Emergency Traffic Management) led by the South Carolina Highway Patrol (SCHP) will coordinate the occupation of designated Traffic and Access Control Points (TACPs) with the County Sheriff or Chief law enforcement officer within the 10-mile EPZ.

The purpose of TACPs is to provide assistance during an evacuation and prevent access to restricted areas. TACP locations are depicted in Figure 1 as Traffic Control Points.

- b. The Georgia Department of Natural Resources (DNR) Law Enforcement Division (lead agency) and Burke County (Georgia) Emergency Management Agency (EMA), in coordination with the South Carolina DNR, will conduct water patrol activities to evacuate hunters, fishermen and campers from the affected area of the Savannah River depicted in Figure 1. The Georgia DNR will coordinate with the U.S. Coast Guard to secure the river.
- c. Georgia Power will control entrance to the JIC.
- d. Only pre-designated forms of identification will be honored at security check points as outlined in SCORERP, Basic Plan, Attachment D.
- e. Local authorities are responsible for security and traffic control within their jurisdictions during all phases of a radiological incident. ESF-16 will coordinate requests from local authorities when reinforcements are required.

5. Radiological Monitoring and Decontamination

- a. See SCORERP, Basic Plan, Annex 6 (Radiological Exposure Control).

- b. County teams with specialized training will conduct radiological monitoring and decontamination of evacuees, emergency workers, vehicles, and equipment. Technical assistance will be provided by SCDES, as required.
- c. Aiken, Allendale, and Barnwell Counties have designated radiological monitoring and decontamination points. The location of each monitoring and decontamination point is contained within county EOPs.
- d. SCEMD maintains its own radiological laboratory and is responsible for the calibration, maintenance, and distribution of radiological monitoring equipment for Aiken, Allendale, and Barnwell Counties' emergency workers.
- e. SCEMD is responsible for the calibration and maintenance of radiological monitoring equipment.
- f. The South Carolina Radiological Equipment and Personnel Redistribution Standard Operating Procedures can be activated to provide personnel and equipment support in the event of an incident at VEGP.

6. Evacuation

- a. When a State of Emergency has been declared, the Governor may issue orders to evacuate all or portions of the 10-mile EPZ surrounding VEGP (See Figure 1). Orders for evacuation of the 2-mile EPZ may precede orders for evacuation of other zones within the 10-mile EPZ.
- b. Evacuation will be ordered at the General Emergency (GE) ECL unless it is deemed unsafe or unfavorable due to a hostile action-based (HAB) incident or impediment(s). Evacuations could be ordered at the Site Area Emergency (SAE) or ALERT ECLs if the potential for further degradation of plant conditions appears imminent.
- c. During a rapidly progressing incident, VEGP officials may recommend evacuation to county authorities who may then direct and coordinate the evacuation of impacted zones.
- d. The Sheriff (as chief law enforcement officer of the affected county) will, in coordination with the SCHP and other law enforcement agencies, coordinate evacuation activities in accordance with the affected county's EOP.
- e. Residential Population (based on the 2024 Census Data)

(1) Population Densities and Evacuation Times:

<u>Population Densities</u>	
<u>Zone</u>	<u>Population</u>
G-10	0
H-10	2
Total	2

(2) Evacuation confirmation time 4-5 hours.

(3) Population Distribution Map (See Figure 3).

(4) Savannah River Site (SRS) Evacuation:

- (a) The majority of South Carolina, which is in the VEGP 10-mile EPZ, is within the SRS boundary.
- (b) DOE has determined that personnel on SRS property can be evacuated outside the 10-mile EPZ within 30 minutes of notification to the Savannah River Site Operations Center (SRSOC).

- f. Evacuation Zones, Landmark and Boundary Descriptions (See Figure 1-Vogtle Electric Generating Plant 10-Mile EPZ Zone Descriptions).
- g. Aiken, Allendale and Barnwell Counties have designated evacuation routes for persons living, working and transiting the 10-mile EPZ. These routes lead to reception centers/shelter areas (See Figure 1).
- h. The affected county will provide transportation to those evacuees who do not have transportation and confined persons who require special transportation. The number of individuals needing transportation will be determined through the special assistance cards located in the VEGP annual brochure. State assistance may be requested. Special transportation needs are addressed in the Aiken, Allendale and Barnwell County EOPs.
- i. All evacuees will be processed through the reception centers as outlined in Annex 2 (Reception Centers and Shelters). Each evacuee will be monitored, registered and processed, including those who elect not to accept temporary shelter. Each county will maintain records for contacting evacuees for use in traffic control and re-entry purposes. Temporary housing should be located at least five miles from the 10-mile EPZ outer boundary (15 miles from the nuclear facility site.)

- j. See SCORERP Basic Plan for reentry, return, and relocation information.

7. Radiological Exposure Control

See SCORERP, Basic Plan, Annex 6 (Radiological Exposure Control).

8. Transportation

- a. The only residences in the 10-mile EPZ lie within a small portion of Barnwell County. These residences are in close proximity to SC125, an all-weather road system. There are no known obstacles that would impede rapid evacuation or response.
- b. Counties and municipal governments have plans for acquiring emergency transportation in the event of a radiological incident. The means for evacuating the homebound and those without private transportation are identified in county plans.
- c. State transportation resources may be requested to augment county transportation needs.

9. Medical

- a. See Annex 3 (Health and Medical Support).
- b. See SCORERP, Basic Plan, Annex 5 (Medical and Public Health Support).

10. Communications

- a. In the event of an emergency at VEGP, the site is capable of notifying the state and local emergency response networks on a 24-hour basis. The VEGP Emergency Director or designee is responsible for notifying the SWP and Aiken, Allendale and Barnwell County Warning Points or EOCs. Once the VEGP EOF is established, communications will be maintained with the SEOC through the following means:
 - (1) Everbridge is an emergency notification system that has been installed to permit simultaneous communications from VEGP to the counties of Aiken, Allendale, and Barnwell and the SEOC (State Warning Point) on a 24-hour per day basis. Everbridge is used for the normal transmission of the Emergency Notification Form. This communication is transmitted via text, phone call, and email.

- (2) Standard commercial telephone lines is the backup notification method to the State and Counties.
 - (a) VEGP will deliver the ENF message to the State and Counties via phone call. Upon retrieval, the State and Counties will transfer the communicated language to a blank ENF.
 - (3) A radio channel to the SCEMD Local Government Radio (LGR) network at the VEGP and SRS EOF with the capability of communicating with SEOC, Counties and SCDES.
 - (4) A WebEx Decision Line (DL) is the primary form of communication that can be used for decision-making on protective actions and/or coordination for siren activation. GEMA leads the DL, while VEGP, the SEOC, GEMA, SRS, Aiken, Allendale, and Barnwell Counties in South Carolina and Burke County in Georgia also participate in the coordination call.
 - (5) A conference bridge, called the Administrative Decision Line (ADL), is maintained by VEGP for the purpose of ORO protective action discussions and decision making. The ADL may be used as the backup to the DL, if it becomes inoperable.
 - (6) A termination call will take place on the WebEx DL or the ADL to declare the deactivation of an emergency event.
- b. Southern Linc is a communication system adapted to an 800 MHz radio located in the SWP and SEOC. County communications officers are responsible for communications within their jurisdiction during a radiological emergency. Their responsibilities include the activation of communications systems, the maintenance and operation of primary and alternate means systems on a 24-hour basis and reporting the systems status during an emergency. The responsible parties are:
- (1) Aiken County: E911 Dispatcher (Communications Officer) is responsible to the Director of the Department of Emergency Management.
 - (2) Allendale County: E911 Dispatcher (Communications Officer) is responsible to the Director of the Emergency Management Agency.

- (3) Barnwell County: E911 Dispatcher (Communications Officer) is responsible to the Barnwell County Sheriff, who coordinates with the County Emergency Management Director.
 - c. Communications with local governments in the 10-mile EPZ will be tested weekly. The Selective Signaling Line is tested on a monthly basis. The DL is tested on a quarterly basis. Communications with federal emergency response organizations shall be tested quarterly. Communications between the nuclear site, state, and local emergency operations centers and field assessment teams shall be tested annually. Communication drills shall also include the aspect of understanding the content of messages.
11. Training
- County directors and directors of State agencies are responsible for assuring radiological emergency response training is conducted in accordance with the SCORERP, Basic Plan, Annex 2 (Training).
12. Drills and Exercises
- a. See the SCORERP, Basic Plan, Annex 4 (Exercises and Drills).
 - b. Exercises are designed to test all elements of emergency preparedness plans pertaining to VEGP and the capability of support elements in the 10-mile EPZ cited in such plans. A biennial exercise will be conducted and will involve mobilizing state and local government personnel and resources adequate to verify capability to respond to an incident scenario (simulated emergency) at VEGP. The exercise will be evaluated and critiqued by FEMA.
 - c. Drills are supervised periods of instruction designed to test, develop and maintain skills of individuals who form a part of radiological emergency response organizations. County directors shall ensure that qualified instructors in the frequency listed in SCORERP, Basic Plan, Annex 4, conduct drills.
 - d. Communications Drills: See SCORERP Basic Plan, Annex 4.

V. ORGANIZATION AND ASSIGNMENT OF RESPONSIBILITIES

- A. State (See SCORERP, Basic Plan, paragraph V).
- B. Local (Aiken, Allendale and Barnwell County EOPs).
- C. Organizational Relationships (See Figure 4).

VI. ADMINISTRATION AND LOGISTICS

- A. See the South Carolina Emergency Operations Plan (SCEOP), Section X, (Administration, Logistics and Finance).
- B. Counties provide their own administrative and logistics support. Requests for augmentation may be submitted in accordance with the SCEOP.

VII. DIRECTION AND CONTROL

A. SEOC

The SEOC is located at 2779 Fish Hatchery Road, West Columbia, South Carolina 29172.

B. County Emergency Operations Centers

- 1. Aiken: Aiken County Government Center, 1930 University Parkway, Aiken, South Carolina 29801.
- 2. Allendale: Emergency Readiness Building, 911-B Main Street North, Allendale, South Carolina 29810.
- 3. Barnwell: Barnwell County Administration Building, 57 Wall Street, Barnwell, South Carolina 29812.

C. Vogtle Electric Generating Plant

- 1. VEGP EOF is located at Southern Nuclear Operating Company, 3535 Colonnade Parkway, Birmingham, Alabama 35243.
- 2. Joint Information Center (JIC) is located at 636 Woodlands Road, Waynesboro, Georgia 30830.

D. State of Georgia

- 1. The Georgia Emergency Management Agency/Homeland Security SEOC is located at 935 United Ave SE, Atlanta, Georgia 30316.
- 2. The Georgia Forward Emergency Operations Center (FEOC) is 200 East Sixth Street, Waynesboro, Georgia 30830.

3. The Burke County, Georgia, EOC is located at 200 East Sixth Street, Waynesboro, Georgia 30830.

TABLE 1 – VOGTLE ELECTRIC GENERATING PLANT 10-MILE EPZ MAP ZONE DESCRIPTIONS

State Traffic Control Points
ATACP-1: Brown Road and Main Street (Route 5)

Aiken County Traffic Control Points
ATACP-2: Main Street (SC 5) and Jackson Road (Route 299)
ATACP-3: Main Street (SC 5) and Baker Street (Route 63)
ATACP-4: McElmurray Farm Road (Route 63) and Atomic Road (Route 125)
ATACP-5: McElmurray Farm Road (Route 63) and Green Pond Road (Route 57)

Allendale/Barnwell County Traffic Control Points
AL-1: Augusta Highway (Route 125) and Furse Mill Road (DOT traffic sign, unmanned).
AL-2: Augusta Highway (Route 125) and Millett Road

Primary Evacuation Routes

G-10: West on County Road 5 to County Road 63 north to County Road 57 west to U.S. Highway 278 north to South Carolina Highway 302 north to South Aiken High School.

H-10: South on South Carolina Highway 125 to U.S. Highway 278 to Allendale-Fairfax High School.

ZONES	LANDMARK DESCRIPTIONS	BOUNDARY DESCRIPTIONS
G-10 Aiken	Cowden Plantation	In Aiken County: Zone G-10 is bordered on the North by a line from Grays Landing on the Savannah River to the intersection of the CSX track and Cowden Plantation Road; on the East by SRS boundary and the CSX Line; on the South by the Savannah River and the SRS boundary and on the West by the Savannah River.
H-10 Allendale	Creek Plantation	In Barnwell County: Zone H-10 is bordered on the North by SRS boundary and SC125 extending into Allendale County (the northern county boundary); in Allendale County on the East by Creek Plantation Road; on the South by the Savannah River and in Barnwell County on the West by the SRS boundary.

FIGURE 1 – VOGTLE ELECTRIC GENERATING PLANT 10-MILE EPZ MAP ZONE DESCRIPTIONS

EMERGENCY PLANNING ZONE MAP

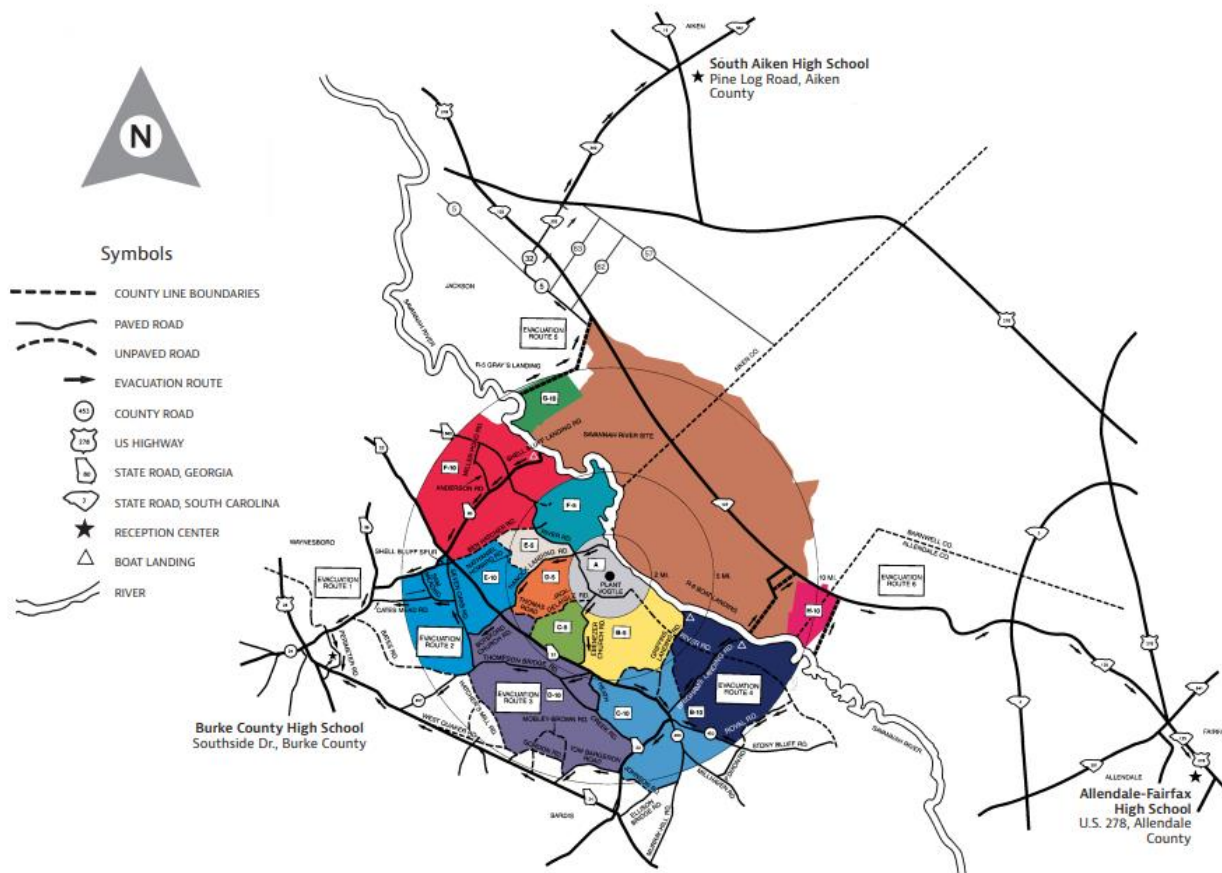


FIGURE 2 – VEGP 50-MILE INGESTION EXPOSURE PATHWAY EMERGENCY PLANNING ZONE

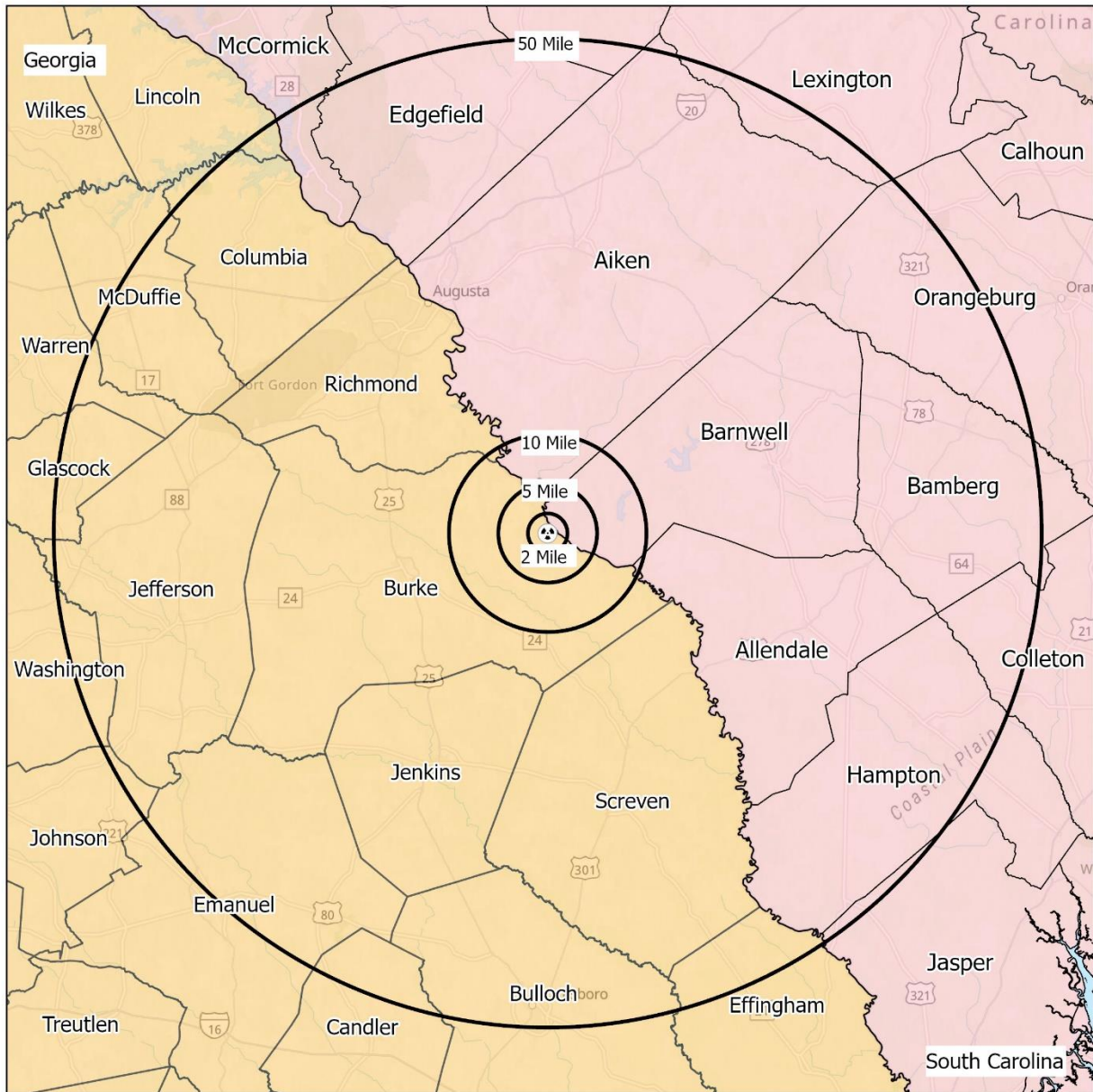


FIGURE 3 - VEGP 10-MILE EPZ POPULATION AND DISTRIBUTION MAP

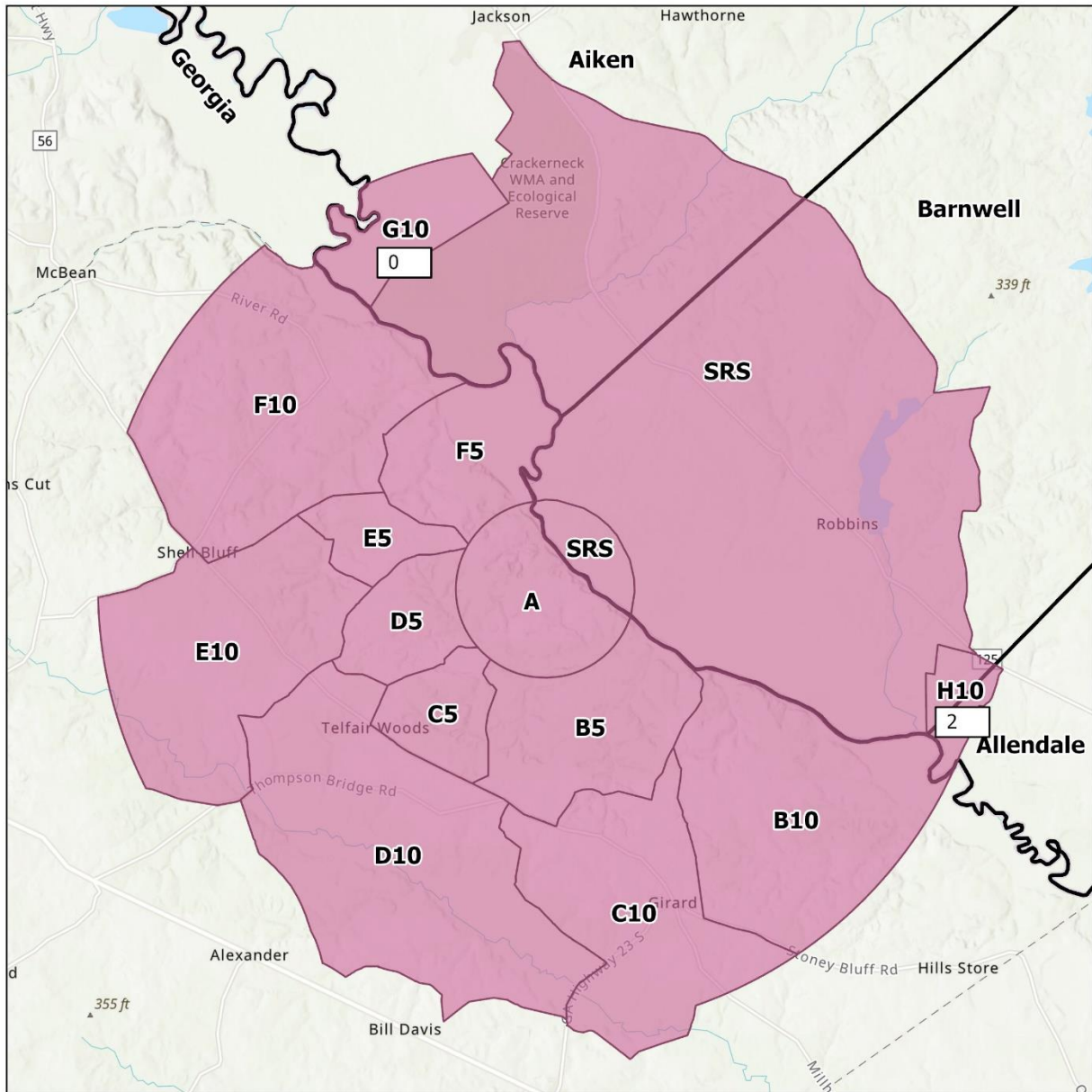


FIGURE 4 – ORGANIZATIONAL RELATIONSHIPS

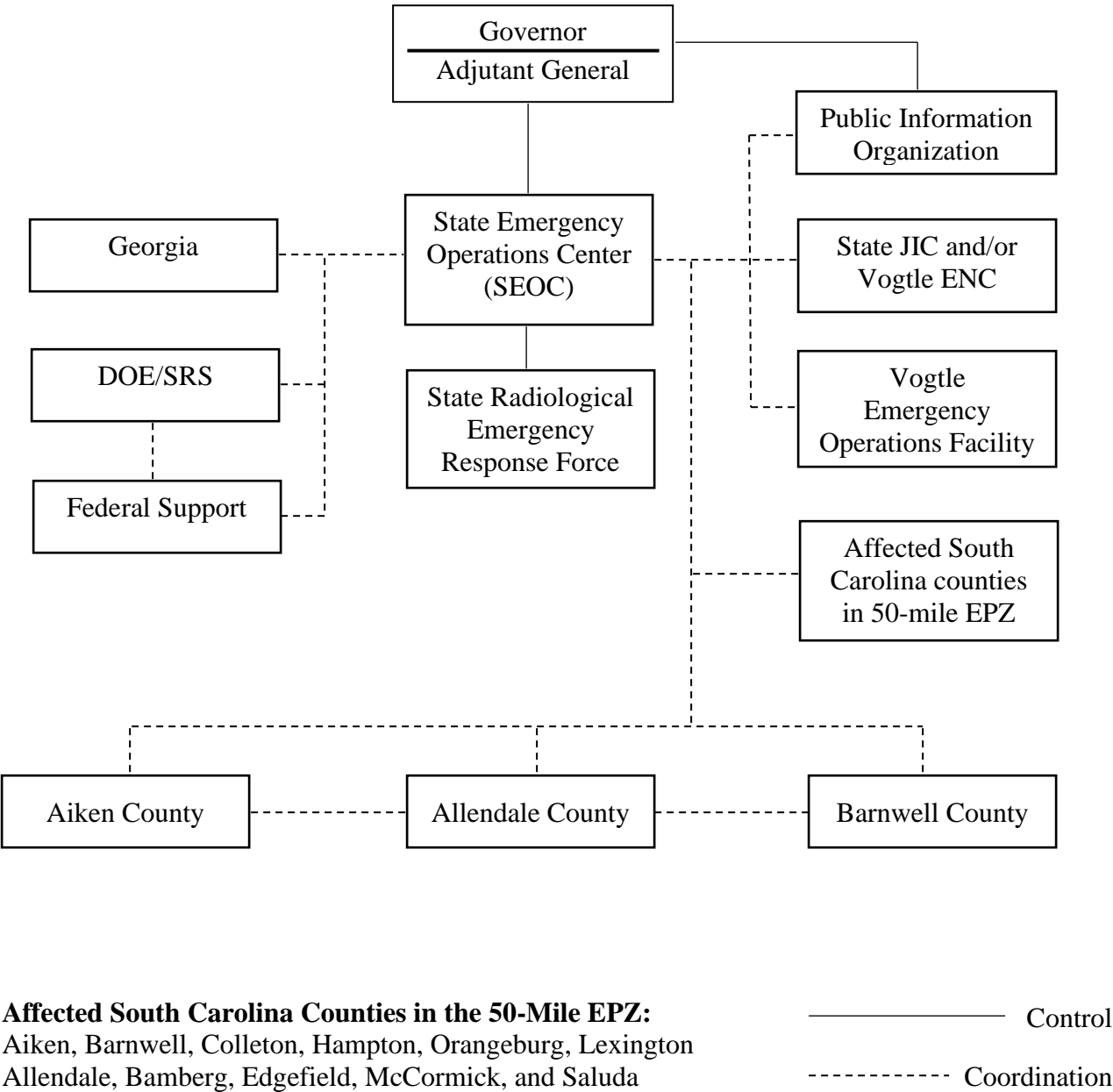


FIGURE 5 – EMERGENCY NOTIFICATION FORM (ENF)

Emergency Notification Form (ENF)		NMP-EP-142-F01	
		SNC	Version 2.4
		Unit S Category 1	Page 1 of 1

☐ INITIAL ☐ FOLLOW-UP
 MESSAGE # _____ Confirmation Phone # _____ AUTHENTICATION CODE # _____
Lines 1-6 are required for INITIAL Notifications

1. EVENT: ☐ DRILL ☐ ACTUAL DECLARATION ☐ TERMINATION (ONLY Lines 1, 2, 4, 12, & 13 required)

2. AFFECTED SITE: ☐ FARLEY ☐ HATCH ☐ VOGTLE 1&2 ☐ VOGTLE 3&4

3. EMERGENCY CLASSIFICATION:
☐ UE ☐ ALERT ☐ SITE AREA EMERGENCY ☐ GENERAL EMERGENCY

4. EAL# _____ Declaration Date _____ Time _____
 Termination Date _____ Time _____ (mark "N/A" for EAL# & Description)

EAL DESCRIPTION:

5. RELEASE TO THE ENVIRONMENT (caused by the emergency) ☐ None ☐ Is Occurring ☐ Has Occurred

6. PROTECTIVE ACTION RECOMMENDATIONS
☐ NONE
☐ EVACUATE: _____
☐ SHELTER: _____
☐ Advise Remainder of EPZ to monitor Local Radio/TV Stations/Tone Alert Radios for Additional Information and Consider the use of KI (potassium iodide) in accordance with State plans and policy.
☐ OTHER: _____

Lines 7-11 are NOT required for INITIAL notification.

7. PROGNOSIS: Upgrade in classification or PAR change is likely before the next follow-up notification ☐ Yes ☐ No

8. SITE UNIT(S) STATUS:
AFFECTED UNIT
☐ YES Unit 1- _____ % Power Shutdown: Date _____ Time _____
☐ YES Unit 2- _____ % Power Shutdown: Date _____ Time _____
☐ YES Unit 3- _____ % Power Shutdown: Date _____ Time _____
☐ YES Unit 4- _____ % Power Shutdown: Date _____ Time _____

9. METEOROLOGICAL DATA:
 Wind Direction from _____ degrees Wind Speed _____ mph Precipitation _____
 Stability Class ☐ A ☐ B ☐ C ☐ D ☐ E ☐ F ☐ G

Lines 10-11 Completed for follow-up notifications, IF Line 5 IS OCCURRING or HAS OCCURRED is selected

10. AIRBORNE RELEASE CHARACTERIZATION: ☐ Mixed ☐ Ground ☐ Elevated
 MAGNITUDE UNITS: ☐ Ci ☐ Ci/sec ☐ uCi/sec
 Mix ID: _____ Noble Gases: _____ Iodine: _____ Particulates: _____

11. DOSE PROJECTION: Projection Period _____ Hours Estimated Release Duration: _____ Hours

	DISTANCE	TEDE (Rem)	THYROID CDE (Rem)
Performed:	Site boundary		
Date: _____	2 Miles		
Time: _____	5 Miles		
	10 Miles		

12. REMARKS (As Applicable) _____

13. APPROVED BY: _____ Title: _____ Date: _____ Time: _____

14. NOTIFIED BY: _____ Date: _____ Time: _____

15. RECEIVED BY (ORO use only): _____ Date: _____ Time: _____

Applicable to Corporate, FNP, HNP, VEGP 1-2, VEGP 3-4