

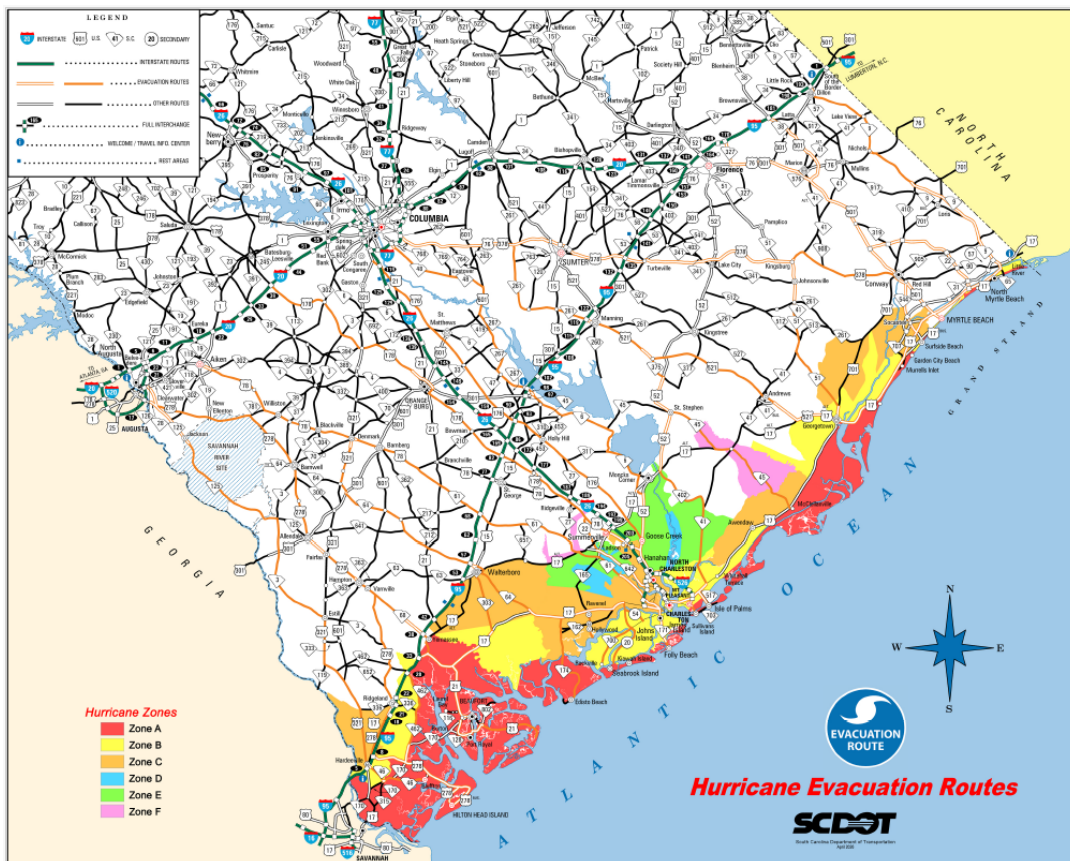
# ANNEX E TO HURRICANE PLAN

## TRAFFIC MANAGEMENT

### I. INTRODUCTION

- A. Evacuating the population from vulnerable areas is one of the most crucial issues in protecting lives in the face of an approaching hurricane.
- B. The basic Traffic Management concept is to allow traffic to flow along evacuation routes unimpeded, and to supplement existing traffic control devices with law enforcement personnel who will staff selected Traffic Control Points (TCP) within the Hurricane Regions.
- C. Each TCP was established to provide assistance to the evacuating populace.
- D. Various assigned Law Enforcement agencies and the SCNG are responsible for staffing and monitoring predetermined TCPs.

### II. EVACUATION ROUTES



- A. The SC Department of Public Safety (SCDPS) and the SC Department of Transportation (SCDOT), in coordination with local officials, identify and establish hurricane evacuation routes throughout the coastal counties within the State.

- B. SCDOT coordinates maintenance of these routes and is responsible for the evacuation route directional signs placed along all routes.
- C. Evacuation Routes
  - 1. Grand Strand Area
    - a. North Myrtle Beach and northward
      - (1) Use SC 9 to proceed to I-95.
    - b. Myrtle Beach 10<sup>th</sup> Avenue North and northward to Briarcliffe Acres
      - (1) Use SC 22 (Conway Bypass) to US 501.
      - (2) Motorists using SC 31 (Carolina Bays Parkway) or the Grissom Parkway will be directed north to SC 22.
    - c. South of 10<sup>th</sup> Avenue North southward to the Myrtle Beach Airport
      - (1) Use US 501 toward Marion and beyond.
      - (2) Under certain conditions, US 501 will be converted to four lanes northbound from SC 22 to SC 576.
    - d. Myrtle Beach Airport southward through Surfside Beach
      - (1) Use SC 544 to US 501.
      - (2) Under certain conditions, US 501 will be converted to four lanes northbound from SC 544 to US 378. The reversed lanes will carry SC 544 traffic onto US 378 where it will travel westbound to I-95 or Columbia.
    - e. Garden City Beach south to Winyah Bay, Georgetown
      - (1) Take US 17 south through Georgetown, then take US 521 to SC 261 to US 378 to Columbia.
      - (2) Under certain conditions, an alternate route from Georgetown will be Black River Road to US 701 to SC 51 to SC 41 to US 378 at Kingsburg.
  - 2. Charleston Area
    - a. Edisto Island and Adams Run
      - (1) Evacuees will take SC 174 to US 17 south to SC 64.

- (2) This will take them to Walterboro, and then to Aiken and I-20.
- b. Yorges Island, Meggett, Hollywood, and Ravenel
  - (1) Use SC 165 to US 17 south to SC 64.
  - (2) This will take them to Walterboro, and then to Aiken and I-20.
- c. Johns Island, Kiawah Island, and Seabrook
  - (1) Use SC 700 to Main Road (S-20) to US 17.
  - (2) Evacuees will take US 17 south to SC 64 where they will go to Walterboro, then to Aiken and I-20.
- d. James Island and Folly Beach
  - (1) Use SC 171 to US 17.
  - (2) Evacuees should then travel south on US 17 to I-526 to the normal lanes of I-26.
- e. City of Charleston
  - (1) The west side of the city (West Ashley) will use SC 61 to US 78, US 321, SC 389 to I-20.
  - (2) Downtown will use normal lanes of I-26.
- f. North Charleston
  - (1) Evacuees will take US 52 (Rivers Avenue) to US 78 to US 178 to Orangeburg then to I-20 or continue on US 52 to US 176 or continue north on US 52.
  - (2) The right lanes of US 52 at Goose Creek will continue on to Moncks Corner and will be directed onto SC 6 which will take them toward Columbia.
  - (3) The left lane of US 52 at Goose Creek will go onto US 176 to Columbia.
  - (4) Evacuees using SC 642 will travel west toward Summerville and take road S-22 (Old Orangeburg Road) to US 78 west.
- g. East Cooper

- (1) Evacuees leaving Mount Pleasant will take I-526 or US 17 south to I-26.
  - (2) Those leaving Sullivan’s Island will use SC 703 to I-526 Business to access I-526, then I-26.
  - (3) Evacuees from the Isle of Palms will use the Isle of Palms connector (SC 517) to go to US 17, where the right lane will turn north on US 17, then proceed to SC 41, to SC 402, then to US 52 to SC 375, then to US 521 to US 378 to Columbia.
  - (4) Evacuees using the left lanes of the Isle of Palms connector will turn left to go to I-526 and then on to I-26.
  - (5) Evacuees on I-526 from East Cooper will be directed to the normal westbound lanes of I-26.
- h. Awendaw and McClellanville
- (1) Evacuees will take SC 45 to US 52 where they will be directed right onto US 52 to SC 375 to US 521 to SC 261 to US 378 to Columbia.
- i. Daniel Island
- (1) Evacuees will use I-526 or Clements Ferry Road as conditions warrant.

***\*\*\*Under certain conditions, access to the reversed lanes of I-26 will begin at the Nexton Crossover near Exit 197. Please follow evacuation instructions provided by law enforcement, official traffic control devices, and SCDOT 511\*\*\****

3. Hilton Head Island and Beaufort Areas

a. Hilton Head Island

- (1) Hilton Head Island evacuees will use both the William Hilton Parkway (US 278 Business) and the Cross Island Parkway toll facility (US 278).
- (2) As these two roads merge, a third lane will be formed by reversing flow on the inside eastbound lane of US 278. This lane will carry the traffic from the toll facility to the three lane section beginning on the mainland.
- (3) Lane assignments will be as follows:

- (a) The right lane on US 278 westbound will exit onto SC 170, proceed to SC 462, then be directed to I-95 northbound at I-95 exit 28.
- (b) The center lane on US 278 westbound will become the right lane at SC 170 which will be directed to I-95 northbound at exit 8.
- (c) The left lane on US 278 westbound at SC 170 will continue on US 278 to Hampton and eventually to North Augusta.

b. Beaufort

(1) Two Lane Evacuation

- (a) Evacuees will use the two present northbound lanes on US 21 to US 17.
- (b) Upon reaching US 17, the right lane will be directed to US 17 South to SC 303 to Walterboro.
- (c) The left lane will be directed to US 17 South, then to US 17 Alt/US 21 to Yemassee and then ultimately to North Augusta.

(2) Three Lane Evacuation

- (a) Under certain conditions, a third northbound lane will be formed by reversing flow in the inside southbound lane of US 21 at US 21 Business west of Beaufort, accommodating traffic from US 21.
- (b) This reversed lane will be directed to US 17 southbound and eventually I-95 northbound at Exit 33 (Point South).
- (c) The remaining two lanes will be used as described above for the two lane evacuation.

D. Emergency Access Routes

1. Charleston Area during I-26 Reversal

- a. To accommodate emergency vehicles to the Charleston area during I-26 lane reversal, the following routes are recommended for emergency vehicle ingress:

- (1) US 21 to US 176 to US 52 to Charleston
  - (2) US 21 to Orangeburg take bypass US 178 to US 78
2. Beaufort Coastal Area during Highway 278/21 Reversal. Eastbound emergency traffic will use the outermost eastbound (#2) lane on Highway 278 or Highway 21, as applicable, during reversal operations.
  3. Emergency Access Routes to Remaining Coastal Areas. The coastal areas with counter flow plans will utilize the remaining, non-reversed, eastbound lanes for emergency vehicles.

### **III. TCP STAFFING COORDINATION**

- A. SCDPS, in cooperation with local law enforcement agencies, compiled the TCPs to support an evacuation, and developed Incident Action Plans (IAP) detailing the specific plan for resourcing, manning requirements, and command and control structure to support evacuation operations.
- B. SCNG, where identified, will work as partners with State and local law enforcement agencies.
- C. Once the TCPs are activated, responsible law enforcement agencies and support personnel will man the TCPs for continuous 24-hour periods unless otherwise noted.
- D. SCDPS maintains a detailed listing of TCP in IAP format.

### **IV. TRAFFIC FLOW EQUIPMENT**

- A. SCDOT will provide all necessary equipment identified during Evacuation Route Coordination meetings to include barriers, cones, remote signal devices, etc.
- B. This equipment is detailed in the respective IAPs.

### **V. TRAFFIC MANAGEMENT OPERATIONS/EVACUATION ROUTE MONITORING**

- A. TCP Staffing. When requested by the SEOC, the designated agencies will staff TCPs during evacuation and reentry (when requested by the SEOC) until traffic resumes normal levels of operation.
- B. Lane Reversal/Counter Flow Procedures
  1. The operational decision of when and if to reverse lanes during an evacuation or reentry is based on the variables outlined in the Hurricane Base Plan.
  2. The lane reversal plans are detailed in the IAPs maintained by SCDPS.

C. Radio Surveillance

1. ESF-16 (Emergency Traffic Management) will monitor SCDPS radio traffic to determine ongoing status of field operations and traffic flow.
2. Local EOCs should monitor local law enforcement channels and report problems to ESF-16.

D. Video Surveillance

1. SCDOT will provide closed-circuit television images of evacuation routes, where available, to ESF-1 (Transportation) and ESF-16 operations personnel.
2. There are traffic cameras at the following locations:

<b>Area</b>	<b>Camera ID</b>	<b>Camera Locations</b>
Charleston County	Charleston Cam 0063	I-26 W @ MM 220.6 (US 17N)
Charleston County	Charleston Cam 0062	I-26 E. @ MM 220 (Ravenel Bridge Entrance)
Charleston County	Charleston Cam 0061	I-26 W @ MM 219.7 (Romney St)
Charleston County	Charleston Cam 0060	I-26 E @ MM 219.4 ( Morrison/East Bay St)
Charleston County	Charleston Cam 0074	I-26 E @ MM 218.3
Charleston County	Charleston Cam 0059	I-26 E @ MM 218.0
Charleston County	Charleston Cam 0035	I-26 E @ MM 217
Charleston County	Charleston Cam 0034	I-26 E @ MM 216 (Cosgrove Ave)
Charleston County	Charleston Cam 0058	I-26 E @ MM 215.5
Charleston County	Charleston Cam 0033	I-26 E @ MM 215 (Dorchester Rd)
Charleston County	Charleston Cam 0032	I-26 W @ MM 214.5 (Bennett Yard Overpass)
Charleston County	Charleston Cam 0031	I-26 E @ MM 214
Charleston County	Charleston Cam 0038	I-26 E @ MM 213 (Montague Ave)
Charleston County	Charleston Cam 0023	I-26 W @ MM 212.5 (I-526)
Charleston County	Charleston Cam 0022	I-26 E @ MM 212
Charleston County	Charleston Cam 0037	I-26 E @ MM 211.5
Charleston County	Charleston Cam 0036	I-26 E @ MM 211
Charleston County	Charleston Cam 0024	I-26 W @ MM 210 (Eagle Drive)
Charleston County	Charleston Cam 0021	I-26 W @ MM 209.6 (Midland Park)
Charleston County	Charleston Cam 0020	I-26 W @ MM 209.4
Charleston County	Charleston Cam 0019	I-26 W @ MM 209 (Ashley Phosphate Rd)
Charleston County	Charleston Cam 0018	I-26 W @ MM 208 (US 52 Connector)
Charleston County	Charleston Cam 0017	I-26 W @ MM 207.5
Charleston County	Charleston Cam 0016	I-26 W @ MM 207
Charleston County	Charleston Cam 0015	I-26 E @ MM 206.2
Charleston County	Charleston Cam 0014	I-26 E @ MM 205.7
Charleston County	Charleston Cam 0013	I-26 W @ MM 205 (US 78 East)

Charleston County	Charleston Cam 0095	I-26 W @ MM 205 (US 78 West)
Charleston County	Charleston Cam 0012	I-26 W @ MM 204
Berkeley County	Charleston Cam 0010	I-26 W @ MM 203.5 (EB Rest Area)
Berkeley County	Charleston Cam 0009	I-26 W @ MM 203 (College Park Rd)
Berkeley County	Charleston Cam 0008	I-26 W @ MM 202
Berkeley County	Charleston Cam 0007	I-26 W @ MM 201.5 (Rest Area)
Berkeley County	Charleston Cam 0006	I-26 W @ MM 201 (Royal Road)
Berkeley County	Charleston Cam 0005	I-26 W @ MM 200.5
Berkeley County	Charleston Cam 0004	I-26 W @ MM 199.5
Berkeley County	Charleston Cam 0003	I-26 W @ MM 199
Berkeley County	Charleston Cam 0096	I-26 E @ MM 198.8 (US 17A N Charleston)
Berkeley County	Charleston Cam 0002	I-26 E @ MM 198.5
Berkeley County	Charleston Cam 0001	I-26 W @ MM 198.1
Berkeley County	Charleston Cam 0094	I-26 W @ MM 197.2
Berkeley County	Charleston Cam 0098	I-26 W @ MM 197 (Nexton Parkway)
Berkeley County	Charleston Cam 0097	I-26 W @ MM 196.9
Berkeley County	Charleston Cam 0099	I-26 W @ MM 196.5
Berkeley County	Charleston Cam 0100	I-26 W @ MM 195.4
Berkeley County	Charleston Cam 0101	I-26 W @ MM 194.17
Berkeley County	Charleston Cam 0102	I-26 W @ MM 193.5
Berkeley County	Charleston Cam 0502	I-26 E @ MM 192.6
Berkeley County	Charleston Cam 0501	I-26 E @ MM 189.5 (Volvo Flyover)
Berkeley County	Charleston Cam 0500	I-26 E @ MM 187.8
Berkeley County	Charleston Cam 0108	I-26 W @ MM 187
Dorchester County	Charleston Cam 0109	I-26 E @ MM 181.5
Dorchester County	Charleston Cam 0113	I-26 W @ MM 177 (SC453)
Dorchester County	Charleston Cam 0185	I-26 W @ MM 174
Dorchester County	Charleston Cam 0186	I-26 W @ MM 172 (US 15)
Orangeburg County	Columbia Cam 0502	I-26 W @ MM 170
Orangeburg County	Columbia Cam 0104	I-26 W @ MM 168 (I-95 N)
Orangeburg County	Columbia Cam 0522	I-26 W @ MM 168
Orangeburg County	Columbia Cam 0105	I-26 E @ MM 165
Orangeburg County	Columbia Cam 0106	I-26 E @ MM 163
Orangeburg County	Columbia Cam 0107	I-26 E @ MM 161.5
Orangeburg County	Columbia Cam 0108	I-26 E @ MM 159 (Homestead Road)
Orangeburg County	Columbia Cam 0177	I-26 W @ MM 154 (US 301)
Orangeburg County	Columbia Cam 0202	I-26 E @ MM 153
Orangeburg County	Columbia Cam 0201	I-26 W @ MM 152 (Rest Area)
Orangeburg County	Columbia Cam 0200	I-26 E @ MM 150.5 (Rest Area)
Orangeburg County	Columbia Cam 0145	I-26 W @ MM 149
Orangeburg County	Columbia Cam 0239	I-26 W @ MM 146.3

Orangeburg County	Columbia Cam 0238	I-26 E @ MM 145.5
Orangeburg County	Columbia Cam 0237	I-26 W @ MM 145 (US 601)
Orangeburg County	Columbia Cam 0525	I-26 W @ MM 142
Calhoun County	Columbia Cam 0144	I-26 W @ MM 139
Calhoun County	Columbia Cam 0517	I-26 W @ MM 137.5
Calhoun County	Columbia Cam 0516	I-26 W @ MM 136.5 (Exit 136)
Calhoun County	Columbia Cam 0515	I-26 W @ MM 135.7
Calhoun County	Columbia Cam 0514	I-26 E @ MM 135.1
Calhoun County	Columbia Cam 0513	I-26 W @ MM 134
Calhoun County	Columbia Cam 0512	I-26 W @ MM 133.2
Calhoun County	Columbia Cam 0511	I-26 W @ MM 132.4
Calhoun County	Columbia Cam 0510	I-26 E @ MM 131.4
Lexington County	Columbia Cam 0509	I-26 W @ MM 130.3
Lexington County	Columbia Cam 0508	I-26 W @ MM 129.8
Lexington County	Columbia Cam 0507	I-26 W @ MM 128.9
Lexington County	Columbia Cam 0506	I-26 E @ MM 128.2
Calhoun County	Columbia Cam 0505	I-26 W @ MM 127.1
Calhoun County	Columbia Cam 0504	I-26 E @ MM 126.6
Calhoun County	Columbia Cam 0503	I-26 W @ MM 125.6
Calhoun County	Columbia Cam 0131	I-26 E @ MM 125 (Old Sandy Run)
Calhoun County	Columbia Cam 0130	I-26 E @ MM 123.5
Calhoun County	Columbia Cam 0129	I-26 E @ MM 123 (Rest Area)
Calhoun County	Columbia Cam 0128	I-26 E @ MM 121.5
Calhoun County	Columbia Cam 0127	I-26 E @ MM 120.7
Lexington County	Columbia Cam 0500	I-26 W @ MM 119.6
Lexington County	Columbia Cam 0501	I-26 W @ MM 119.4
Lexington County	Columbia Cam 0125	I-26 W @ MM 118.5
Lexington County	Columbia Cam 0124	I-26 W @ MM 117.5
Lexington County	Columbia Cam 0019	I-26 W @ MM 117
Lexington County	Columbia Cam 0123	I-26 E @ MM 116.5
Lexington County	Columbia Cam 0018	I-26 E @ MM 115.7 (I-77 S Entrance Ramp)
Lexington County	Columbia Cam 0020	I-26 W @ MM 115.5 (I-77 S Flyover)
Lexington County	Columbia Cam 0039	I-26 E @ MM 115 (US 321)
Lexington County	Columbia Cam 0038	I-26 E @ MM 114 (Old Dunbar Rd)
Lexington County	Columbia Cam 0037	I-26 E @ MM 113.5
Lexington County	Columbia Cam 0036	I-26 E @ MM 113 (SC 302)
Lexington County	Columbia Cam 0035	I-26 W @ MM 112.2
Lexington County	Columbia Cam 0034	I-26 E @ MM 112
Lexington County	Columbia Cam 0033	I-26 E @ MM 111 (US 1)
Lexington County	Columbia Cam 0032	I-26 E @ MM 110.5 (Leaphart Road)
Lexington County	Columbia Cam 0015	I-26 E @ MM 110.1 (US 378)

Lexington County	Columbia Cam 0031	I-26 E @ MM 109.5
Lexington County	Columbia Cam 0502	I-26 E @ MM 109
Lexington County	Columbia Cam 0030	I-26 E @ MM 108.5
Richland County	Columbia Cam 0017	I-26 W @ MM 108 (I-126 Flyover)
Richland County	Columbia Cam 0016	I-26 E @ MM 108 (Bush River Rd)
Richland County	Columbia Cam 0527	I-26 W @ MM 107 (I-20 W)
Lexington County	Columbia Cam 0014	I-26 W @ MM 106.8
Lexington County	Columbia Cam 0022	I-26 W @ MM 106.5 (St. Andrews Rd)
Lexington County	Columbia Cam 0023	I-26 W @ MM 106
Lexington County	Columbia Cam 0021	I-26 E @ MM 105.7
Lexington County	Columbia Cam 0024	I-26 W @ MM 105.5
Lexington County	Columbia Cam 0025	I-26 W @ MM 105
Lexington County	Columbia Cam 0026	I-26 W @ MM 104 (Piney Grove Rd)
Lexington County	Columbia Cam 0027	I-26 W @ MM 103.9
Richland County	Columbia Cam 0028	I-26 W @ MM 103 (Harbison Blvd)
Richland County	Columbia Cam 0040	I-26 W @ MM 102.5
Richland County	Columbia Cam 0041	I-26 W @ MM 102
Richland County	Columbia Cam 0042	I-26 W @ MM 101
Charleston County	Charleston Cam 0039	I-526 E @ MM 10 (US 17)
Charleston County	Charleston Cam 0053	I-526 E @ MM 10.5
Charleston County	Charleston Cam 0040	I-526 E @ MM 11 (Glenn McConnell Pkwy)
Charleston County	Charleston Cam 0041	I-526 E @ MM 12.2 (SC 61)
Charleston County	Charleston Cam 0055	I-526 W @ MM 13.5
Charleston County	Charleston Cam 0045	I-526 E @ MM 14 (Leeds Ave)
Charleston County	Charleston Cam 0052	I-526 E @ MM 15 (Dorchester Rd)
Charleston County	Charleston Cam 0042	I-526 E @ MM 16 (International Blvd)
Charleston County	Charleston Cam 0054	I-526 W @ MM 16.4 (International Blvd)
Charleston County	Charleston Cam 0043	I-526 E @ MM 18 (Rivers Ave)
Charleston County	Charleston Cam 0044	I-526 E @ MM 19 (N. Rhett Ave)
Charleston County	Charleston Cam 0025	I-526 E @ MM 20 (Virginia Ave)
Berkeley County	Charleston Cam 0026	I-526 E @ MM 20.5 (Don Holt )
Berkeley County	Charleston Cam 0028	I-526 W @ MM 21 (Don Holt Bridge)
Berkeley County	Charleston Cam 0029	I-526 W @ MM 21.5 (Don Holt (Down))
Berkeley County	Charleston Cam 0046	I-526 E @ MM 23
Berkeley County	Charleston Cam 0030	I-526 W @ MM 23 (Clements Ferry Road)
Berkeley County	Charleston Cam 0072	I-526 @ MM 24.3 W (Wando Bridge)
Charleston County	Charleston Cam 0048	I-526 E @ MM 26 (Wando Bridge)
Charleston County	Charleston Cam 0049	I-526 E @ MM 28 (Long Point Rd)
Charleston County	Charleston Cam 0050	I-526 E @ MM 30 (US 17)
Aiken County	Columbia Cam 0601	I-20 W @ MM 1
Aiken County	Columbia Cam 0602	I-20 E @ MM 2.7

Lexington County	Columbia Cam 0163	I-20 W @ MM 51
Lexington County	Columbia Cam 0162	I-20 W @ MM 52.5
Lexington County	Columbia Cam 0161	I-20 E @ MM 53
Lexington County	Columbia Cam 0160	I-20 W @ MM 54
Lexington County	Columbia Cam 0159	I-20 W @ MM 55 (SC 6)
Lexington County	Columbia Cam 0157	I-20 E @ MM 56.4
Lexington County	Columbia Cam 0156	I-20 E @ MM 57
Lexington County	Columbia Cam 0155	I-20 W @ MM 58
Lexington County	Columbia Cam 0154	I-20 W @ MM 58.5
Lexington County	Columbia Cam 0153	I-20 E @ MM 59
Lexington County	Columbia Cam 0152	I-20 E @ MM 59.5
Lexington County	Columbia Cam 0151	I-20 W @ MM 59.8
Lexington County	Columbia Cam 0150	I-20 E @ MM 60.5
Lexington County	Columbia Cam 0148	I-20 W @ MM 61
Lexington County	Columbia Cam 0147	I-20 W @ MM 62
Lexington County	Columbia Cam 0146	I-20 W @ MM 62.5
Lexington County	Columbia Cam 0013	I-20 W @ MM 63 (Bush River Rd)
Richland County	Columbia Cam 80029	I-20 W @ MM 64.0
Richland County	Columbia Cam 80033	I-20 W @ MM 64.3 (Burning Tree)
Richland County	Columbia Cam 0060	I-20 W @ MM 64.7
Richland County	Columbia Cam 0061	I-20 W @ MM 64.5
Richland County	Columbia Cam 0062	I-20 W @ MM 65.2
Richland County	Columbia Cam 0063	I-20 W @ MM 66.5 (Broad River Bridge)
Richland County	Columbia Cam 0064	I-20 W @ MM 67
Richland County	Columbia Cam 0065	I-20 W @ MM 67.3
Richland County	Columbia Cam 0066	I-20 W @ MM 68.1
Richland County	Columbia Cam 0067	I-20 W @ MM 68.5
Richland County	Columbia Cam 0068	I-20 E @ MM 70 (Fairfield Rd)
Richland County	Columbia Cam 0069	I-20 E @ MM 70.2
Richland County	Columbia Cam 0070	I-20 W @ MM 70.8
Richland County	Columbia Cam 0071	I-20 E @ MM 71 (North Main St)
Richland County	Columbia Cam 0072	I-20 W @ MM 71.5
Richland County	Columbia Cam 0073	I-20 W @ MM 72 (Farrow Rd)
Richland County	Columbia Cam 0074	I-20 E @ MM 73 (SC 277)
Richland County	Columbia Cam 0075	I-20 E @ MM 73.5
Richland County	Columbia Cam 0076	I-20 E @ MM 74 (Two Notch Rd)
Richland County	Columbia Cam 0077	I-20 W @ MM 74.5
Richland County	Columbia Cam 0078	I-20 E @ MM 75
Richland County	Columbia Cam 0079	I-20 E @ MM 75.5
Richland County	Columbia Cam 0080	I-20 E @ MM 76 (I-77 S Exit 76)
Richland County	Columbia Cam 0081	I-20 E @ MM 76.5 (Alpine Rd)

Richland County	Columbia Cam 0082	I-20 E @ MM 77
Richland County	Columbia Cam 0083	I-20 E @ MM 77.5
Richland County	Columbia Cam 0084	I-20 E @ MM 78.2 (Smallwood Rd)
Richland County	Columbia Cam 0085	I-20 W @ MM 78.5
Richland County	Columbia Cam 0087	I-20 E @ MM 79.5
Richland County	Columbia Cam 0088	I-20 W @ MM 79.5
Richland County	Columbia Cam 0089	I-20 E @ MM 80 (Clemson Rd)
Richland County	Columbia Cam 0090	I-20 E @ MM 81
Richland County	Columbia Cam 0091	I-20 E @ MM 82 (Spears Creek Rd)
Richland County	Columbia Cam 0092	I-20 E @ MM 82.7
Richland County	Columbia Cam 0093	I-20 E @ MM 83.3
Richland County	Columbia Cam 0287	I-20 E @ MM 83.8
Kershaw County	Columbia Cam 0288	I-20 W @ MM 84.9
Kershaw County	Columbia Cam 0289	I-20 W @ MM 86.8 (Exit 87)
Kershaw County	Columbia Cam 0290	I-20 W @ MM 87.5
Kershaw County	Columbia Cam 0291	I-20 W @ MM 88.4
Kershaw County	Columbia Cam 0292	I-20 W @ MM 89
Kershaw County	Columbia Cam 0293	I-20 E @ MM 89.8
Kershaw County	Columbia Cam 0294	I-20 W @ MM 90.8
Kershaw County	Columbia Cam 0295	I-20 W @ MM 91.6 (Exit 92)
Kershaw County	Columbia Cam 0296	I-20 E @ MM 92.7
Kershaw County	Columbia Cam 0297	I-20 E @ MM 93.2
Kershaw County	Columbia Cam 0299	I-20 W @ MM 94.7
Kershaw County	Columbia Cam 0520	I-20 E @ MM 95.2
Kershaw County	Columbia Cam 0523	I-20 W @ MM 96
Kershaw County	Columbia Cam 0300	I-20 @ Exit 98
Kershaw County	Columbia Cam 0301	I-20 E @ MM 99.7
Kershaw County	Columbia Cam 0302	I-20 W @ MM 100.8
Kershaw County	Columbia Cam 0303	I-20 @ MM 102.2
Kershaw County	Columbia Cam 0304	I-20 E @ MM 104.3
Kershaw County	Columbia Cam 0305	I-20 E @ MM 105.3
Kershaw County	Columbia Cam 0306	I-20 W @ MM 105.8
Lee County	Columbia Cam 0307	I-20 E @ MM 106.9
Lee County	Columbia Cam 0308	I-20 W @ Exit 108
Lee County	Columbia Cam 0309	I-20 W @ MM 108.1
Lee County	Columbia Cam 0310	I-20 E @ MM 109.1
Lee County	Columbia Cam 0311	I-20 W @ MM 110.7
Lee County	Columbia Cam 0312	I-20 W @ MM 111.9
Darlington County	Florence Cam 0241	I-20 W @ MM 126.5
Darlington County	Florence Cam 0240	I-20 W @ MM 127.3
Darlington County	Florence Cam 0239	I-20 W @ MM 128.1

Darlington County	Florence Cam 0238	I-20 W @ MM 129 (Truck Parking Area)
Darlington County	Florence Cam 0237	I-20 W @ MM 129.9
Darlington County	Florence Cam 0236	I-20 W @ exit 131
Darlington County	Florence Cam 0235	I-20 W @ MM 132.3
Darlington County	Florence Cam 0234	I-20 W @ MM 133.1
Darlington County	Florence Cam 0233	I-20 W @ MM 134.1
Darlington County	Florence Cam 0232	I-20 W @ MM 135.3
Darlington County	Florence Cam 0231	I-20 W @ MM 136.6
Darlington County	Florence Cam 0230	I-20 W @ Exit 137
Darlington County	Florence Cam 0229	I-20 E @ MM 138.1
Florence County	Florence Cam 0228	I-20 W @ MM 139.3
Florence County	Florence Cam 0227	I-20 W @ MM 140.2
Florence County	Florence Cam 0226	I-20 E @ MM 141 (I-95)
Lexington County	Columbia Cam 0122	I-77 S @ MM 2
Lexington County	Columbia Cam 0121	I-77 @ MM 3
Richland County	Columbia Cam 0120	I-77 @ MM 4
Richland County	Columbia Cam 0002	I-77 @ MM 4.9
Richland County	Columbia Cam 0119	I-77 S @ MM 5 (Bluff Road)
Richland County	Columbia Cam 0003	I-77 S @ MM 5.8
Richland County	Columbia Cam 0118	I-77 N @ MM 6.3 (Shop Road)
Richland County	Columbia Cam 0004	I-77 S @ MM 7
Richland County	Columbia Cam 0117	I-77 N @ MM 7.5
Richland County	Columbia Cam 0116	I-77 N @ MM 9 (Garners Ferry Rd)
Richland County	Columbia Cam 0115	I-77 N @ MM 9.8
Richland County	Columbia Cam 0114	I-77 S @ MM 10.3 (Fort Jackson Blvd)
Richland County	Columbia Cam 0113	I-77 N @ MM 12.8
Richland County	Columbia Cam 0112	I-77 N @ MM 12.0 (Forest Dr)
Richland County	Columbia Cam 0111	I-77 N @ MM 12
Richland County	Columbia Cam 0110	I-77 S @ MM 13.8 (Decker Blvd)
Richland County	Columbia Cam 0109	I-77 N @ MM 14.9 (Percival Rd)
Richland County	Columbia Cam 0164	I-77 S @ MM 16.5
Richland County	Columbia Cam 0165	I-77 S @ MM 16.9
Richland County	Columbia Cam 0166	I-77 S @ MM 17 (Two Notch Road)
Richland County	Columbia Cam 0167	I-77 S @ MM 19 (Farrow Rd)
Richland County	Columbia Cam 0168	I-77 S @ MM 19.5
Richland County	Columbia Cam 0169	I-77 S @ MM 20.5
Richland County	Columbia Cam 0170	I-77 S @ MM 22.0 (Killian Rd)
Richland County	Columbia Cam 0171	I-77 S @ MM 22.5
Richland County	Columbia Cam 0172	I-77 N @ MM 23.5
Richland County	Columbia Cam 0173	I-77 N @ MM 24 (Wilson Blvd)
Richland County	Columbia Cam 0174	I-77 S @ MM 25

Richland County	Columbia Cam 0175	I-77 S @ MM 26
Richland County	Columbia Cam 0176	I-77 N @ MM 27 (Blythewood Rd)
GA	Charleston Cam 0503	I-95 N @ MM .00 (NB Georgia Bridge)
Jasper County	Charleston Cam 0504	I-95 N @ MM .05
Jasper County	Charleston Cam 0505	I-95 S @ MM 1.5
Jasper County	Charleston Cam 0506	I 95 N @ MM 2.9
Jasper County	Charleston Cam 0507	I 95 N @ MM 3.4
Jasper County	Charleston Cam 0508	I-95 S @ MM 3.9
Jasper County	Charleston Cam 0051	I-95 N @ MM 4
Jasper County	Charleston Cam 0509	I-95 N @ MM 4.6
Jasper County	Columbia Cam 0305	I-95 N @ MM 5
Jasper County	Charleston Cam 0510	I-95 S @ MM 5.5
Jasper County	Charleston Cam 0511	I-95 N @ MM 6.5
Jasper County	Charleston Cam 0512	I-95 S @ MM 7.4
Jasper County	Charleston Cam 0513	I-95 N @ MM 7.8
Jasper County	Columbia Cam 0304	I-95 S @ MM 8
Jasper County	Charleston Cam 0514	I-95 S @ MM 8.4
Jasper County	Charleston Cam 0515	I-95 S @ MM 9.4
Jasper County	Charleston Cam 0516	I-95 S @ MM 10.4
Jasper County	Charleston Cam 0517	I-95 S @ MM 11.3
Jasper County	Columbia Cam 0303	I-95 S @ MM 22 (US 17)
Jasper County	Columbia Cam 0236	I-95 N @ MM 33 (Hwy 17)
Jasper County	Columbia Cam 0235	I-95 N @ MM 33.2
Jasper County	Columbia Cam 0234	I-95 S @ MM 33.9
Hampton County	Columbia Cam 0233	I-95 S @ MM 34.5
Hampton County	Columbia Cam 0232	I-95 S @ MM 36.2
Hampton County	Columbia Cam 0231	I-95 S @ MM 36.7
Hampton County	Columbia Cam 0230	I-95 S @ MM 37.5
Hampton County	Columbia Cam 0229	I-95 S @ MM 38 (Hwy 68)
Hampton County	Columbia Cam 0228	I-95 S @ MM 39.2
Colleton County	Columbia Cam 0227	I-95 S @ MM 41.7
Colleton County	Columbia Cam 0226	I-95 N @ MM 41.8
Colleton County	Columbia Cam 0225	I-95 S @ MM 47 (SB Rest Area)
Colleton County	Columbia Cam 0224	I-95 S @ MM 48.2
Colleton County	Columbia Cam 0223	I-95 S @ MM 50.5
Colleton County	Columbia Cam 0222	I-95 N @ MM 52.5
Colleton County	Columbia Cam 0220	I-95 S @ MM 53.4
Colleton County	Columbia Cam 0221	I-95 N @ MM 53.5
Colleton County	Columbia Cam 0219	I-95 N @ MM 54.2
Colleton County	Columbia Cam 0218	I-95 S @ MM 54.2
Colleton County	Columbia Cam 0217	I-95 N @ MM 55

Colleton County	Columbia Cam 0216	I-95 S @ MM 55
Colleton County	Columbia Cam 0215	I-95 N @ MM 55.8
Colleton County	Columbia Cam 0214	I-95 S @ MM 55.8
Colleton County	Columbia Cam 0213	I-95 S @ MM 56.5
Colleton County	Columbia Cam 0212	I-95 S @ MM 57.5
Colleton County	Columbia Cam 0211	I-95 S @ MM 58.3
Colleton County	Columbia Cam 0210	I-95 S @ MM 59.2
Colleton County	Columbia Cam 0208	I-95 S @ MM 62.4
Colleton County	Columbia Cam 0209	I-95 N @ MM 62.5
Colleton County	Columbia Cam 0207	I-95 N @ MM 63.0
Colleton County	Columbia Cam 0206	I-95 S @ MM 63.1
Colleton County	Columbia Cam 0205	I-95 S @ MM 64.5
Colleton County	Columbia Cam 0199	I-95 S @ MM 68.5
Dorchester County	Columbia Cam 0197	I-95 S @ MM 70.5
Dorchester County	Columbia Cam 0198	I-95 N @ MM 70.5
Dorchester County	Columbia Cam 0196	I-95 S @ MM 71.5
Dorchester County	Columbia Cam 0195	I-95 N @ MM 72.5
Dorchester County	Columbia Cam 0194	I-95 S @ MM 72.5
Dorchester County	Columbia Cam 0193	I-95 N @ MM 73.9
Dorchester County	Columbia Cam 0192	I-95 S @ MM 73.9
Dorchester County	Columbia Cam 0191	I-95 S @ MM 74.5
Dorchester County	Columbia Cam 0190	I-95 S @ MM 75.5
Dorchester County	Columbia Cam 0189	I-95 S @ MM 77.0 (US 78)
Dorchester County	Columbia Cam 0188	I-95 S @ MM 77.2
Dorchester County	Columbia Cam 0187	I-95 S @ MM 78.5
Dorchester County	Columbia Cam 0184	I-95 N @ MM 79
Dorchester County	Columbia Cam 0183	I-95 N @ MM 82 (US 178)
Dorchester County	Columbia Cam 80031	I-95 S @ MM 84
Dorchester County	Columbia Cam 80001	I-95 S @ MM 85.4
Orangeburg County	Columbia Cam 0103	I-95 N @ MM 86 (I-26 W)
Orangeburg County	Columbia Cam 0098	I-95 S @ MM 90 (US 176)
Orangeburg County	Columbia Cam 0097	I-95 S @ MM 91.5
Orangeburg County	Columbia Cam 0096	I-95 N @ MM 93.2
Orangeburg County	Columbia Cam 0178	I-95 N @ MM 94.5
Orangeburg County	Columbia Cam 0179	I-95 S @ MM 95.3
Orangeburg County	Columbia Cam 0180	I-95 N @ MM 95.6
Orangeburg County	Columbia Cam 0181	I-95 S @ MM 97 (US 301)
Orangeburg County	Columbia Cam 0182	I-95 S @ MM 97.5
Orangeburg County	Columbia Cam 0183	I-95 S @ MM 98 (SC 6)
Orangeburg County	Columbia Cam 0184	I-95 S @ MM 99 (SB Rest Area)
Orangeburg County	Columbia Cam 0185	I-95 N @ MM 99.5

Clarendon County	Columbia Cam 0186	I-95 N @ MM 102 (US 15)
Clarendon County	Columbia Cam 0240	I-95 N @ MM 102 (US 301)
Clarendon County	Columbia Cam 0241	I-95 N @ MM 102.5
Clarendon County	Columbia Cam 0242	I-95 N @ MM 105.5
Clarendon County	Columbia Cam 0243	I-95 N @ MM 106.3
Clarendon County	Columbia Cam 0244	I-95 N @ MM 107
Clarendon County	Columbia Cam 0245	I-95 N @ MM 108 (S-102)
Clarendon County	Columbia Cam 0246	I-95 N @ MM 108.5
Clarendon County	Columbia Cam 0247	I-95 N @ MM 109.6
Clarendon County	Columbia Cam 0248	I-95 N @ MM 110.6
Clarendon County	Columbia Cam 0249	I-95 N @ MM 111.5
Clarendon County	Columbia Cam 0250	I-95 N @ MM 112.8
Clarendon County	Columbia Cam 0251	I-95 N @ MM 113.3
Clarendon County	Columbia Cam 0252	I-95 N @ MM 113.8
Clarendon County	Columbia Cam 0253	I-95 N @ MM 115 (US 301)
Clarendon County	Columbia Cam 0254	I-95 S @ MM 115.2
Clarendon County	Columbia Cam 0255	I-95 S @ MM 115.8
Clarendon County	Columbia Cam 0256	I-95 S @ MM 116.4
Clarendon County	Columbia Cam 0257	I-95 S @ MM 117.2
Clarendon County	Columbia Cam 0258	I-95 S @ MM 118.8 (SC 261)
Clarendon County	Columbia Cam 0259	I-95 S @ MM 119.2
Clarendon County	Columbia Cam 0260	I-95 S @ MM 120
Clarendon County	Columbia Cam 0261	I-95 N @ MM 122 (US 521)
Clarendon County	Columbia Cam 0262	I-95 N @ MM 122.7
Clarendon County	Columbia Cam 0263	I-95 N @ MM 123.4
Clarendon County	Columbia Cam 0264	I-95 S @ MM 126.5
Clarendon County	Columbia Cam 0265	I-95 N @ MM 126.9
Clarendon County	Columbia Cam 0266	I-95 S @ MM 127.7
Clarendon County	Columbia Cam 0267	I-95 N @ MM 128.7
Clarendon County	Columbia Cam 0268	I-95 N @ MM 131
Clarendon County	Columbia Cam 0269	I-95 S @ MM 131.6
Clarendon County	Columbia Cam 0270	I-95 S @ MM 132.4
Clarendon County	Columbia Cam 0271	I-95 S @ MM 133.8
Sumter County	Columbia Cam 0272	I-95 N @ MM 134.3
Sumter County	Columbia Cam 0273	I-95 S @ MM 135 (US 378)
Sumter County	Columbia Cam 0274	I-95 S @ MM 137.6
Sumter County	Columbia Cam 0275	I-95 S @ MM 139.1 (Rest Area)
Sumter County	Columbia Cam 0276	I-95 N @ MM 140.2
Sumter County	Columbia Cam 0277	I-95 N @ MM 141 (SC 53)
Sumter County	Columbia Cam 0278	I-95 N @ MM 142.1
Sumter County	Columbia Cam 0280	I-95 S @ MM 144

Sumter County	Columbia Cam 0282	I-95 S @ MM 145.7
Florence County	Florence Cam 0225	I-95 S @ MM 147.5
Florence County	Florence Cam 0224	I-95 S @ MM 148
Florence County	Florence Cam 0222	I-95 N @ MM 150 (SC 403)
Florence County	Florence Cam 0221	I-95 N @ MM 150.5
Florence County	Florence Cam 0220	I-95 S @ MM 151.7
Florence County	Florence Cam 0219	I-95 N @ MM 152.7
Florence County	Florence Cam 0218	I-95 N @ MM 153.5 (Center Rd)
Florence County	Florence Cam 0217	I-95 N @ MM 154.6
Florence County	Florence Cam 0216	I-95 N @ MM 155.5
Florence County	Florence Cam 0215	I-95 N @ MM 156.5
Florence County	Florence Cam 0214	I-95 @ MM 157.3 (US 76)
Florence County	Florence Cam 0209	I-95 S @ MM 159 (Pine Needles)
Florence County	Florence Cam 0213	I-95 N @ MM 159.6
Florence County	Florence Cam 0201	I-95 S @ MM 160 (I-20 W)
Florence County	Florence Cam 0212	I-95 N @ MM 160.5
Florence County	Florence Cam 0208	I-95 S @ MM 161.5
Florence County	Florence Cam 0202	I-95 S @ MM 162.5
Florence County	Florence Cam 0203	I-95 S @ MM 164 (US 52)
Florence County	Florence Cam 0204	I-95 S @ MM 165
Darlington County	Florence Cam 0205	I-95 N @ MM 167
Florence County	Florence Cam 0206	I-95 N @ MM 169 (TV Road)
Florence County	Florence Cam 0207	I-95 N @ MM 170 (Williston Rd)
Florence County	Florence Cam 0210	I-95 N @ MM 171.2
Florence County	Florence Cam 0242	I-95 S @ MM 171.8
Florence County	Florence Cam 0243	I-95 N @ MM 173
Florence County	Florence Cam 0244	I-95 N @ MM 174
Florence County	Florence Cam 0245	I-95 N @ MM 174.7
Dillon County	Florence Cam 0246	I-95 N @ MM 177
Dillon County	Florence Cam 0247	I-95 N @ MM 179.4
Dillon County	Florence Cam 0248	I-95 N @ MM 180.1
Dillon County	Florence Cam 0249	I-95 S @ MM 181
Dillon County	Florence Cam 0250	I-95 N @ Exit 181
Dillon County	Florence Cam 0251	I-95 S @ MM 182.7
Dillon County	Florence Cam 0252	I-95 N @ MM 184.1
Dillon County	Florence Cam 0253	I-95 S @ MM 184.8
Dillon County	Florence Cam 0254	I-95 N @ MM 186.3
Dillon County	Florence Cam 0255	I-95 S @ MM 187.4
Dillon County	Florence Cam 0256	I-95 N @ MM 188.8
Dillon County	Florence Cam 0257	I-95 N @ Exit 190
Dillon County	Florence Cam 0258	I-95 N @ MM 191.5

Dillon County	Florence Cam 0259	I-95 N @ MM 192.3
Dillon County	Florence Cam 0260	I-95 @ Exit 193
Dillon County	Florence Cam 0261	I-95 N @ MM 193.9
Dillon County	Florence Cam 0262	I-95 S @ MM 195.2
Dillon County	Florence Cam 0263	I-95 S @ MM 196
Dillon County	Florence Cam 0264	I-95 S @ MM 197
Dillon County	Florence Cam 0265	I-95 S @ MM 197.6
Dillon County	Florence Cam 0266	I-95 N @ MM 198.3
Horry County	MB Cam 0300	US 501 N @ Main St (Aynor)
Horry County	MB Cam 0015	US 501 N @ SC 22
Horry County	MB Cam 0001	US 501 N @ 16th Ave
Horry County	MB Cam 0002	US 501 S @ US 701
Horry County	MB Cam 0020	US 501 S @ Waccamaw River
Horry County	MB Cam 0034	US 501 S @ Academy Dr.
Horry County	MB Cam 0003	US 501 N @ SC 544
Horry County	MB Cam 0021	US 501 S @ University Blvd (Coastal Carolina)
Horry County	MB Cam 0004	US 501 N @ Singleton Ridge Rd
Horry County	MB Cam 0005	US 501 N @ Gardner Lacy Rd
Horry County	MB Cam 0006	US 501 S @ South of Gardner Lacy Rd
Horry County	MB Cam 0022	US 501 S (North of Carolina Forest)
Horry County	MB Cam 0007	US 501 N @ Carolina Forest Blvd
Horry County	MB Cam 0008	US 501 N @ Waccamaw Pines Dr
Horry County	MB Cam 0026	US 501 S @ SC 31 (Carolina Bays Pkwy)
Horry County	MB Cam 0023	US 501 N @ SC 31
Horry County	MB Cam 0024	US 501 N @ Forestbrook Rd (MB TMC)
Horry County	MB Cam 0025	US 501 N @ Burcale Road
Horry County	MB Cam 0027	US 501 N @ George Bishop Pkwy
Horry County	MB Cam 0028	George Bishop @ US 501 N
Horry County	MB Cam 0016	US 501 N @ Intracoastal Waterway
Horry County	MB Cam 0036	SC 22 E @ MM 24
Horry County	MB Cam 0041	SC 31 S @ MM 1.8 (Robert Edge)
Horry County	MB Cam 0040	SC 31 N @ MM 13.9 (Robert Grissom)
Horry County	MB Cam 0039	SC 31 S @ MM 24.2 (SC 544)
Horry County	MB Cam 0029	SC 544 @ Dick Pond Rd
Horry County	MB Cam 0030	SC 544 @ Windsor Bay Rd
Horry County	MB Cam 0038	Dick Pond Rd @ Socastee Bridge
Horry County	MB Cam 0042	Sea Mountain Hwy @ Little River Bridge
Horry County	MB Cam 0037	US 17 N @ Bayshore Dr
Horry County	MB Cam 0019	US 17 N @ SC 22
Horry County	MB Cam 0012	US 17 S @ Lake Arrowhead Rd
Horry County	MB Cam 0011	US 17 N @ US 17 Business

Horry County	MB Cam 0032	US 17 N @ 38th Ave N
Horry County	MB Cam 0018	US 17 N @ 29th Avenue
Horry County	MB Cam 0017	US 17 N @ 10th Ave (Joe White Blvd)
Horry County	MB Cam 0010	US 17 S @ US 501 N
Horry County	MB Cam 0033	US 17 @ Harrelson Blvd
Horry County	MB Cam 0009	US 17 S @ SC 707 (Backgate)
Horry County	MB Cam 0031	US 17 N @ Palmetto Point
Horry County	MB Cam 0013	US 17 Median @ SC 544
Williamsburg County	MB Cam 0035	US 17 N @ Bellamy Ave.
Charleston County	Charleston Cam 0070	US 17 S @ Mt Pleasant (Holiday Inn)
Charleston County	Charleston Cam 0069	US 17 S @ Mt Pleasant Entrance
Charleston County	Charleston Cam 0068	US 17 S Ravenel Bridge @ MM 33.7 Mt Pleasant
Charleston County	Charleston Cam 0075	Mt. Pleasant Tower - Lower
Charleston County	Charleston Cam 0078	Charleston Tower - Upper
Charleston County	Charleston Cam 0077	Charleston Tower - Lower
Charleston County	Charleston Cam 0067	US 17 S Ravenel Bridge @ MM 33.2 Mt. Pleasant
Charleston County	Charleston Cam 0066	US 17 S Ravenel Bridge @ MM 32.8
Charleston County	Charleston Cam 0065	US 17 S Ravenel Bridge @ MM 32.3 (East Bay)
Charleston County	Charleston Cam 0064	US 17 N Ravenel Bridge @ MM 31.9 (Morrison)
Charleston County	Charleston Cam 0071	SC 703 W Coleman Blvd @ Patriots Point Rd
Charleston County	Charleston Cam 0076	US 17 N Ravenel Bridge @ Mt. Pleasant Tower-Upper
Charleston County	Charleston Cam 0079	Mt. Pleasant Tower - Upper 2
Charleston County	Charleston Cam 0080	Charleston Tower - Upper 2
Charleston County	Charleston Cam 0114	SC 703 Ben Sawyer Bridge
Charleston County	Charleston Cam 0115	Folly Rd S @ Terns Nest
Charleston County	Charleston Cam 0116	Folly Rd N @ Teal Marsh Rd
Charleston County	Charleston Cam 0117	Folly Rd N @ Tides End
Charleston County	Charleston Cam 0118	Folly Rd S @ Oak Island Creek
Charleston County	Charleston Cam 0119	SC 703 Ben Sawyer Blvd NB @ North Point Ln
Charleston County	Charleston Cam 0120	SC 703 Ben Sawyer Blvd SB @ Center St Ext
Charleston County	Charleston Cam 0121	SC 703 Ben Sawyer Blvd NB @ Station 22 ½
Charleston County	Charleston Cam 0122	Isle of Palms Connector @ Rifle Range Rd.
Charleston County	Charleston Cam 0123	Hwy 171 S @ Wappoo Cut Bridge
Beaufort County	Charleston Cam 0124	US 21 Bus @ Woods Memorial Bridge
Charleston County	Charleston Cam 0125	Hwy 17N @ Ashley River Bridge

3. ESF-16 will monitor radio traffic and may periodically request situation reports in areas of evacuation routes not visible by the SCDOT closed-circuit television cameras.

E. Traffic Counter Surveillance

1. SCDOT will provide electronic access to counter data to include vehicle count and speed data to ESF-1 and ESF-16.
2. Permanent traffic counter sites:

<b>TRAFFIC COUNTER SITES LOCATED WITHIN EACH HURRICANE REGION</b>				
<b>COUNTY</b>	<b>ROUTE</b>	<b>LOCATION</b>	<b>DOT SITE #</b>	<b>THRU LANES</b>
<b>Southern Coastal Hurricane Region</b>				
AIKEN	SC-39	APPROX. 1 MI SOUTH OF I-20	107	2
	I-20	MILEPOST 37.7 - SC 39 (OLD 96 INDIAN TRL) TO US 178 (FAIRVIEW RD) (LEXINGTON)	114	4
	I-20	MILEPOST 12.7 - S- 144 (BETTIS ACADEMY RD) TO SC 19 (EDGEFIELD HWY) (AIKEN)	115	4
	I-520	State Line - GEORGIA TO US 1 (JEFFERSON DAVIS HWY)	150	4
BAMBERG	US-301	BAMBERG: US 301 @ LITTLE SALKEHATCHIE RIVER	4	4
	US-78	S- 86 (CHAR-AUGUSTA RD) TO SC 61 (EDISTO RIVER RD)	187	2
BARNWELL	US-78	IN ELKO @ THE WEST CITY LIMITS	9	2
BEAUFORT	US-17/21	YEMASEE: N. OF S-3 SOUTH OF YEMASEE	5	2
	US-278	BEAUFORT: @ JARVIS CREEK W OF HILTON HEAD	35	4
	US-278	HILTON HEAD @ TOLL FACILITY	47	4
	US-21	S- 38 (KEANS NECK RD) TO US 17 (TRASK PKWY)	48	4
	SC-170	BET. S-141 & S-162	117	4
	SC-170	Between S-18 & S-20	149	4
COLLETON	I-95	Between SC 63 (SNIDERS HWY) TO SC 64 (BELLS HWY)	89	4
HAMPTON	US-321	NORTH OF S-616 - S- 616 (PARK AVE) TO L- 278 (INDUSTRY DR)	63	2
	US-278	BETWEEN S- 287 (HALLS MILLS RD), L- 1014 TO S- 83 (MAGNOLIA ST)	64	2
	SC-3	BETWEEN S- 19 (OLD ORANGEBURG RD) TO S- 522 (OLD ORANGEBURG RD), Road closed to through traffic until late Summer 2026	65	2

JASPER	I-95	JASPER: I-95 @ WELCOME CENTER @ GEORGIA STATE LINE TO US 17 (WHYTE HARDEE BLVD), Site is under construction	28	4
	US-278	BETWEEN I- 95 (INTERSTATE 95) TO S- 442	67	4
	SC-46	BETWEEN S- 176 (JENKINS AVE) TO SC 170 (OKATIE HWY), L- 898	73	2

**TRAFFIC COUNTER SITES LOCATED WITHIN EACH HURRICANE REGION**

COUNTY	ROUTE	LOCATION	DOT SITE #	THRU LANES
<b>Central Coastal Hurricane Region</b>				
BERKELEY	I-526	BETWEEN S- 33 (CLEMENTS FERRY RD) TO L- 1520 (SEVEN FARMS DR)	183	4
	US-176	BETWEEN US 17 ALT (N MAIN ST) TO S- 61 (MYERS RD)	59	4
	SC-45	S OF S-1126; BETWEEN S- 33 (CLEMENTS FERRY RD) TO SC 402 (HWY 402), S- 133	76	2
CALHOUN	I-26	BET. S-31 & US- 21	94	6
CHARLESTON	US-17	JACKSONBORO: COLLETON County Line TO SC 174 (HIGHWAY 174)	2	4, Out of service for this Hurricane season
	US-17	CHARLESTON @ COOPER RIVER BR	6	4
	US-17	CHARLESTON @ COOPER RIVER BR	7	4
	I-526	MM 11: BTWN SC 461 (PAUL CANTRELL	34	4

		BLVD) TO S- 475 (LEEDS AV)		
	US-17	CHARLESTON: SOUTH OF SC- 171, BETWEEN S- 520 (W OAK FOREST DR) TO SC 171 (WESLEY DR)	40	4
	SC-7	BETWEEN: SC 171 (OLD TOWNE RD) TO I- 26 (INTERSTATE 26)	85	6
	I-526	MM 29: BETWEEN S- 97 (LONG POINT RD) TO S- 56 (MATHIS FERRY RD)	90	4
	I-26	MM 210: BETWEEN S- 75 (ASHLEY PHOSPHATE RD) TO S- 1342 (AVIATION)	124	8
	SC-517	BETWEEN: SC 703 (PALM BLVD) TO S- 51 (RIFLE RANGE RD)	142	2
	SC-703	BETWEEN: S- 51 (MCCANTS DR) TO S- 199 (STATION 22 1/2 ST)	143	2
	SC-171	BETWEEN: SC 700 (MAYBANK HWY), L- 1743 TO SC 700 (FOLLY ROAD BLVD)	144	5
DORCHESTER	I-95	MM 72: BETWEEN SC 61 (AUGUSTA	55	4

		HWY) (COLLETON) TO US 78 (W JIM BILTON BLVD)		
	US-78	BETWEEN US 178 (E MAIN ST) TO SC 27 (RIDGEVILLE RD)	60	2
	SC-61	BETWEEN US 17 ALT (US 17-A HWY S) TO L- 1754 (OLD COURSE RD)	61	2
	I-26	MM 184: BETWEEN SC 453 (JUDGE ST) TO SC 27 (OLD GILLIARD RD) (BERKELEY)	72	4
LEXINGTON	I-20	MM 46 GILBERT: S- 34 (POND BRANCH RD) TO S- 204 (LONGS POND RD)	22	4
	I-20	MM 62: BETWEEN US 378 (SUNSET BLVD) TO S- 273 (BUSH RIVER RD)	86	6
	S-278	Calks Ferry Road BETWEEN S- 169 (CALKS FERRY RD) TO S- 34 (POND BRANCH RD)	151	2
	S-243	Nazareth Road BETWEEN S- 204 (LONGS POND RD) TO L- 1848 (KYZER RD)	152	2
	S-1257	Bachman Road BETWEEN S- 73	153	2

		(FISH HATCHERY) TO L- 757 (BACHMAN RD)		
	S-244	Old Orangeburg Road BETWEEN SC 602 (PLATT SPRINGS RD) TO S- 70 (TWO NOTCH RD)	154	2
	S-378	Columbia Airport Exp BETWEEN SC 302 TO S- 299 (LEXINGTON DR)	169	4
ORANGEBURG	US-21	IN ORANGEBURG BETWEEN US 21 BUS (MAGNOLIA ST), US 601 TO S- 94 (SAINT MATTHEWS RD)	3	4
	I-95	MM 89: BETWEEN I-26 & US-176	56	4
	I-95	MM 101: AT SANTEE LAKE BETWEEN SC 6 (OLD NUMBER SIX HWY) TO US 15	88	4
	I-26	MM 141: S- 22 (BURKE RD) (CALHOUN) TO US 601 (SAINT MATTHEWS RD)	116	4
	US 321	BETWEEN S- 161 (HEBRON RD) TO S- 288 (DRAGSTRIP RD)	173	4
	US 176	BETWEEN SC	184	2

		210 (VANCE RD) TO I- 95 (INTERSTATE 95)		
RICHLAND	US-21	COLUMBIA: @ BLOSSOM STREET BRIDGE	13	4
	I-126	BETWEEN S- 3020 (GREYSTONE BLVD) TO US 21 (ELMWOOD AVE)	21	8
	I-77	MM 22: BETWEEN S- 52 (KILLIAN RD) TO US 21 (WILSON BLVD)	32	6
	I-20	MM 70: BETWEEN US- 321 & US-21	52	6, Site is currently out of service
	I-77	MM 17: BETWEEN I-20 & US-1	92	6
	I-26	MM 103: BETWEEN SC 60 (LAKE MURRAY BLVD) TO S- 757 (HARBISON BLVD)	95	6
	I-77	Mm 7.3: BETWEEN SC 768 (SHOP RD) TO US 76 (GARNERS FERRY RD)	113	6
	SC-277	BETWEEN SC 555 (FARROW RD) TO S- 218 (FONTAINE RD)	137	4
	I-20	MM 75: BETWEEN US 1 (TWO NOTCH RD) TO I- 77	139	6, Site is currently out of service due to milled up in road work

		(INTERSTATE 77)		
	US-1	Between Lexington Co Ln (US-378) to Huger St.	147	4
	S-2919	Polo Road BETWEEN S- 63 (ALPINE RD) TO S- 2214 (POLO RD)	155	2
	US-176	Broad River Rd BETWEEN S-674 (LOST CREEK DR) TO S-1280 (PINEY GROVE R)	157	4

<b>TRAFFIC COUNTER SITES LOCATED WITHIN EACH HURRICANE REGION</b>				
<b>COUNTY</b>	<b>ROUTE</b>	<b>LOCATION</b>	<b>DOT SITE #</b>	<b>THRU LANES</b>
<b>Northern Coastal Hurricane Region</b>				
CLARENDON	US-301	1.5 MI. NE OF MANNING BETWEEN US 521 (SUMTER HWY) TO US 301 (TRINITY CHURCH RD)	10	2
	I-95	MM 123 MANNING: BETWEEN US 521 (SUMTER HWY) TO SC 527 (BLACK RIVER RD)	19	4
DARLINGTON	US-52	N. OF DARLINGTON BETWEEN S-41 (MONT CLARE RD) TO US 15 (HARTSVILLE HWY)	37	2
	I-20	MM 130 LAMAR: BETWEEN S-22 (LEE STATE PARK RD) TO US 401 (LAMAR HWY)	42	4
DILLON	I-95	MM 195 DILLON: WELCOME CENTER, SC 9 (RADFORD BLVD) TO NORTH CAROLINA STATE LINE	29	4
FLORENCE	US-378	BETWEEN SC 51 (E HWY 378-HANNAH) TO SC 41 (KINGSBURG HWY)	62	4
	I-20	MM 138: BETWEEN SC 340	108	4

		(TIMMONSVILLE HWY) (DARLINGTON) TO I- 95, US 20 SPUR		
	I-95	MM 156.6: S- 83 (CENTER ROAD) TO US 76 (PISGAH ROAD)	87	4
	SC 327	BETWEEN US 76 (E PALMETTO ST) TO S- 26 SPR (N WILLISTON ROAD)	171	4
	US 301	BETWEEN S- 13 (E NATIONAL CEMETERY ROAD) TO US 76 (E PALMETTO ST), SC 327	172	2
GEORGETOWN	US-17	GEORGETOWN: 1 MI E OF WACCAMAW, BETWEEN S- 80 (SAINT JAMES ST) TO S- 759 (WATERFORD RD), L- 2580	11	4
	SC-51	AT BROWN'S FERRY PARK N OF S- 861; BETWEEN S- 318 (JOHNSON RD) TO WILLIAMSBURG COUNTY LINE	74	2
	US-521	BETWEEN US 521 BUS (GEORGETOWN HWY) TO SC 41 BUS (S MORGAN AVE)	167	4
HORRY	US-17	US-17 WELCOME CENTER NEAR NC STATE LINE; BETWEEN S- 50 (MINEOLA AVE) TO SC 179 (HWY 179), L- 8040	30	4
	SC-9	BETWEEN SC 905 (S HWY 905) TO S- 20 (SEA MOUNTAIN HWY)	36	4
	SC-544	BETWEEN SC 544 CON (W COX FERRY RD) TO S- 814 (HWY 814)	66	4
	SC-22	1 mi E of S-591; BETWEEN US 501 (E HWY 501) TO SC 319 (HWY 319)	82	4
	SC-22	AT S-873 (FOWLER RD); BETWEEN US 701 (N HWY 701) TO SC 905 (HWY 905)	83	4
	SC-22	BETWEEN SC 31 (CAROLINA BAYS PKY) TO US 17 (N KINGS HWY)	84	6
	US-501	1 MI E. OF SC-22; BETWEEN SC 22 (HWY 22) TO S- 165 (CULTRA RD)	104	4
	US-501	1 MI W. OF SC-22; BETWEEN S- 651 (BILL JONES RD), L- 651 TO SC 22 (HWY 22)	105	4
	SC-31	1.5 MI S. OF SC-22; BETWEEN SC 22 (HWY 22) TO S- 1315 (ROBERT M GRISSOM PKY)	119	6
	SC-31	BETWEEN SC 9 (E HWY 9) TO SC 31 CON (ROBERT EDGE PKY)	120	6

	US-17	BETWEEN GEORGETOWN COUNTY LINE TO SC 544 (DICK POND RD)	129	4
	US-17	BETWEEN L- 537 (67TH AVE N) TO US 17 BUS (N KINGS HWY)	130	4
	US-378	CONWAY; BETWEEN MARION COUNTY LINE TO S- 134 (HWY 134)	134	2
	SC-9	GREEN SEA; BETWEEN US 76 (HWY 9) TO SC 9 BUS (OLIVE DR)	135	2
	SC-31	BETWEEN SC 31 CON (ROBERT EDGE PKY) TO SC 22 (HWY 22)	168	6
MARION	US-76	BETWEEN US 301 (W HWY 76) TO S- 64 (LAUGHLIN RD)	68	4
	SC-41	MARION; BETWEEN SC 908 (HWY 908) TO SC 41 ALT (S HWY 41A)	133	2
WILLIAMSBURG	US-521	BETWEEN GEORGETOWN COUNTY LINE TO SC 377 (MARTIN LUTHER KING JR HWY)	57	2

F. High Profile Bridge Closures

1. Due to onset of high winds, certain bridges may need to be closed to vehicle or water traffic for safety. Closure of these bridges will be a local decision based on current wind conditions.
2. Prior to closure, county EOCs will coordinate the closure with state ESF-1/SCDOT.
3. The following lists those bridges that could be closed due to high winds:

HIGH PROFILE BRIDGES			
COUNTY	ROADWAY	BODY OF WATER	LOCATION
Beaufort	SC 170	Broad	
Beaufort	SC 170	Chechessey	
Beaufort	SC 802	Intracoastal Waterway	McTeer Bridge
Beaufort	SC 802	Battery Creek	
Beaufort	US 21	Whale Branch	
Beaufort	US 21	Intracoastal Waterway	
Beaufort	US 21	Johnson Creek	
Beaufort	US 278	Intracoastal Waterway	
Beaufort	US 278	Toll Bridge to Hilton	

		Head	
Beaufort	US 21	Intracoastal Waterway	
Berkeley	SC 41	Wando	
Berkeley	US 17 Alt	Tail Race Canal	
Berkeley	US 17 Alt	Santee	
Charleston	S-10-20	Intracoastal Waterway	Limehouse Bridge
Charleston	SC 7	Ashley	North Bridge
Charleston	SC 30	Ashley	James Island Connector
Charleston	SC 171	Intracoastal Waterway	Wappoo Cut
Charleston	SC 174	Intracoastal Waterway	Dawhoo
Charleston	SC 517	Intracoastal Waterway	Isle of Palms Connector
Charleston	SC 700	Stono	Maybank Bridge
Charleston	SC 703	Intracoastal Waterway	Ben Sawyer
Charleston	SC 703	Breech Inlet	Breech Inlet
Charleston	US 17	Cooper	Arthur Ravenel
Charleston	US 17	Ashley	Old and New Ashley River Bridges
Charleston	I 526	Ashley	Westmorland Bridge
Charleston	I 526	Cooper	Don Holt Bridge
Charleston	I 526	Wando	Wando Bridge
Jasper	US 17	Black	Talmadge Bridge
Jasper	SC 119	Savannah	Savannah River Bridge

4. The following swing and drawbridges may be closed to water traffic prior to the onset of tropical storm force winds.

<b>SOUTH CAROLINA SWING AND DRAW BRIDGES</b>		
COUNTY	ROADWAY	LOCATION
Horry	SC 9	Little River

Horry	SC 616	Socastee
Charleston	SC 171	Wappoo Cut
Charleston	SC 703	Ben Sawyer
Charleston	US 17 N	New Ashley
Charleston	US 17 S	Old Ashley
Beaufort	US 21	Lady's Island

G. Comfort Stations

1. Comfort stations are designated points along I-26, which are to be supplied with portable toilets and potable water. Comfort stations augment the existing facilities at rest areas during a reversal of I-26.
2. The comfort stations along the I-26 corridor are located in the following rest areas:
  - a. East and west bound weigh stations in Dorchester County
  - b. East and west bound rest area facilities in Orangeburg County
  - c. East and west bound rest area facilities in Calhoun County
3. Water Supply for Comfort Stations
  - a. SCDOT will have a contract vendor provide the water at each of the six (6) comfort stations. This contract will be in effect at the beginning of each hurricane season.
  - b. SCDOT will supply each site with 18,000 20-oz. bottles of water. SCDOT will utilize its Supply Depot trucks to haul the water from the vendor's location to each of the six (6) sites. One truck will deploy to each site simultaneously.
  - c. Once ESF-1 is notified of a pending lane reversal, SCDOT will begin loading and transporting water to the comfort stations.
  - d. SCDOT requires eight (8) hours to load and deliver the water for the comfort stations.
4. Portable Toilets for Comfort Stations

- a. Upon notification of a mandatory evacuation, SCDOT will stock each comfort station with a minimum of 20 portable toilets. SCDOT will have a contract in place at the beginning of each hurricane season, which will utilize vendors in close proximity to each comfort station.
  - b. SCDOT will have portable toilets delivered to all locations within eight (8) hours from Notice of Pending Lane Reversal.
- H. The South Carolina National Guard (SCNG) will pre-stage Vehicle Recovery Teams (VRTs) to support evacuation operations at the following locations:
- 1. Northern Hurricane Region
    - a. US 501 at SC 41 Alternate
    - b. US 501 at Pine Island Bridge
    - c. US 501 at SC 544
    - d. US 501 at SC 22
    - e. Galivants Ferry at US 501
  - 2. Central Hurricane Region
    - a. I-26 at Old Sandy Run Road (Exit 125)
    - b. I-26 at US-601 Overpass
    - c. I-26 at SC 453 (Mile Marker 177)
    - d. I-26 at College Park Road (Mile Marker 203)
    - e. I-26 at I-526 (Mile Marker 213) Traffic Control Point Staffing
  - 3. Southern Hurricane Region
    - a. US 278 and the Cross Island Parkway
    - b. US 278 and SC 170 McGarveys
    - c. I-95 exit 33 (Highway 21 Point South)
    - d. US 21 at US 17 at Gardens Corner
    - e. US 21 at SC 116 (MCAS Armory)
- I. Aviation Support

1. SCDPS, ESF-16, in coordination with ESF-13 (Law Enforcement), ESF-19 (Military Support), and the SC Wing – Civil Air Patrol (CAP) will utilize State and local aircraft to monitor traffic flow.
2. SCDPS has developed and will maintain Incident Action Plans (IAP) detailing the need for aviation assets to support evacuation operations.
3. During air operations, pilots will report any observed incident impeding the flow of traffic per the SCDPS Hurricane Aviation IAP.
4. These reports will be promptly relayed to ESF-16 as the situation requires, which will, in turn, efficiently communicate the information to the SCDPS Incident Commanders.